

# Assembly guide

## D8 Unit

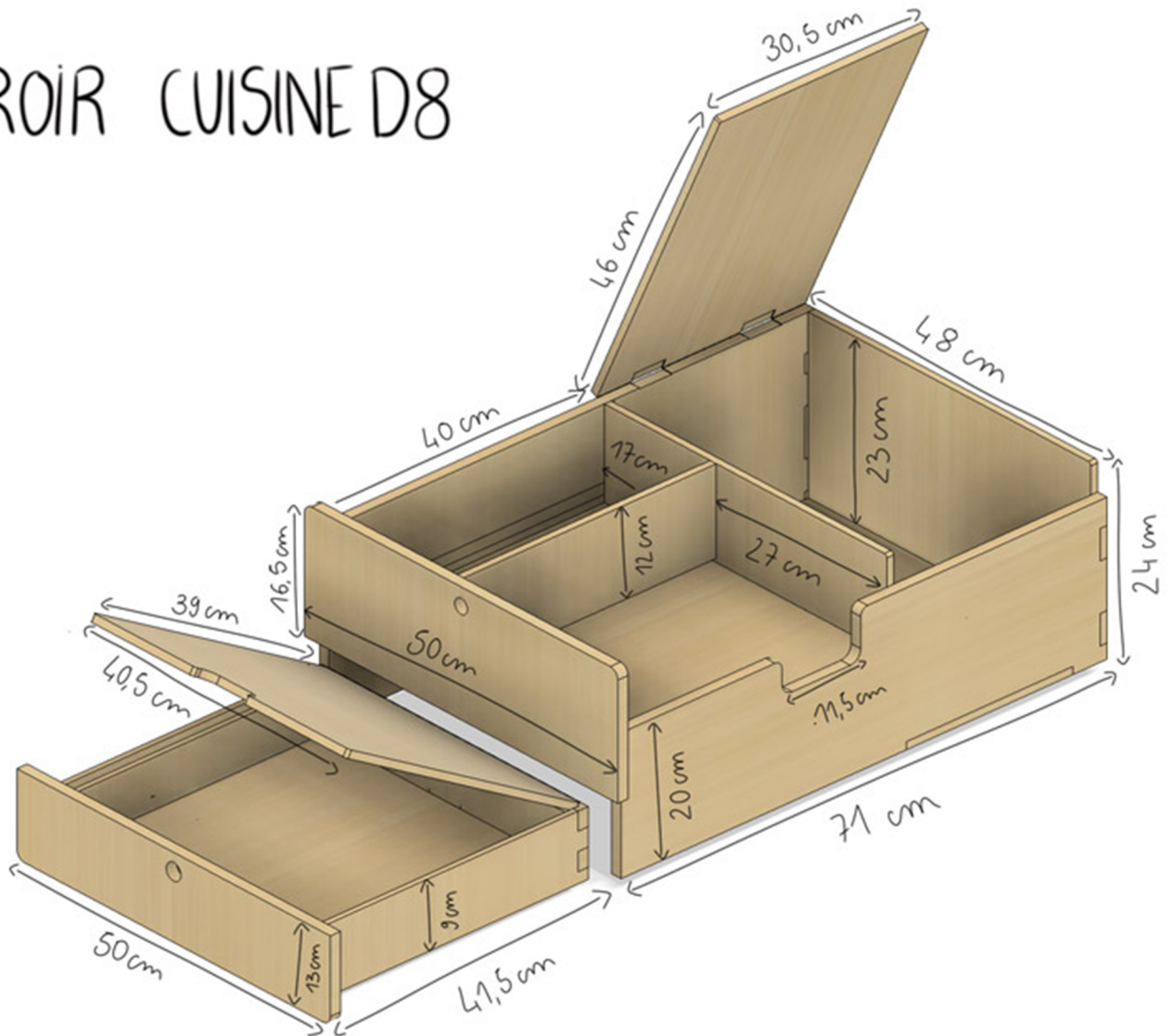


**WELCOME ABOARD!**

Let's assemble Your dream furniture and get you on the road.

**LET'S GO !**

## TIROIR CUISINE D8



## SHOW OFF YOUR SKILLS & INSPIRE THE VANLIFE COMMUNITY!

Share your build on Facebook, Instagram ou TikTok.

Use #SimpleVansLife :

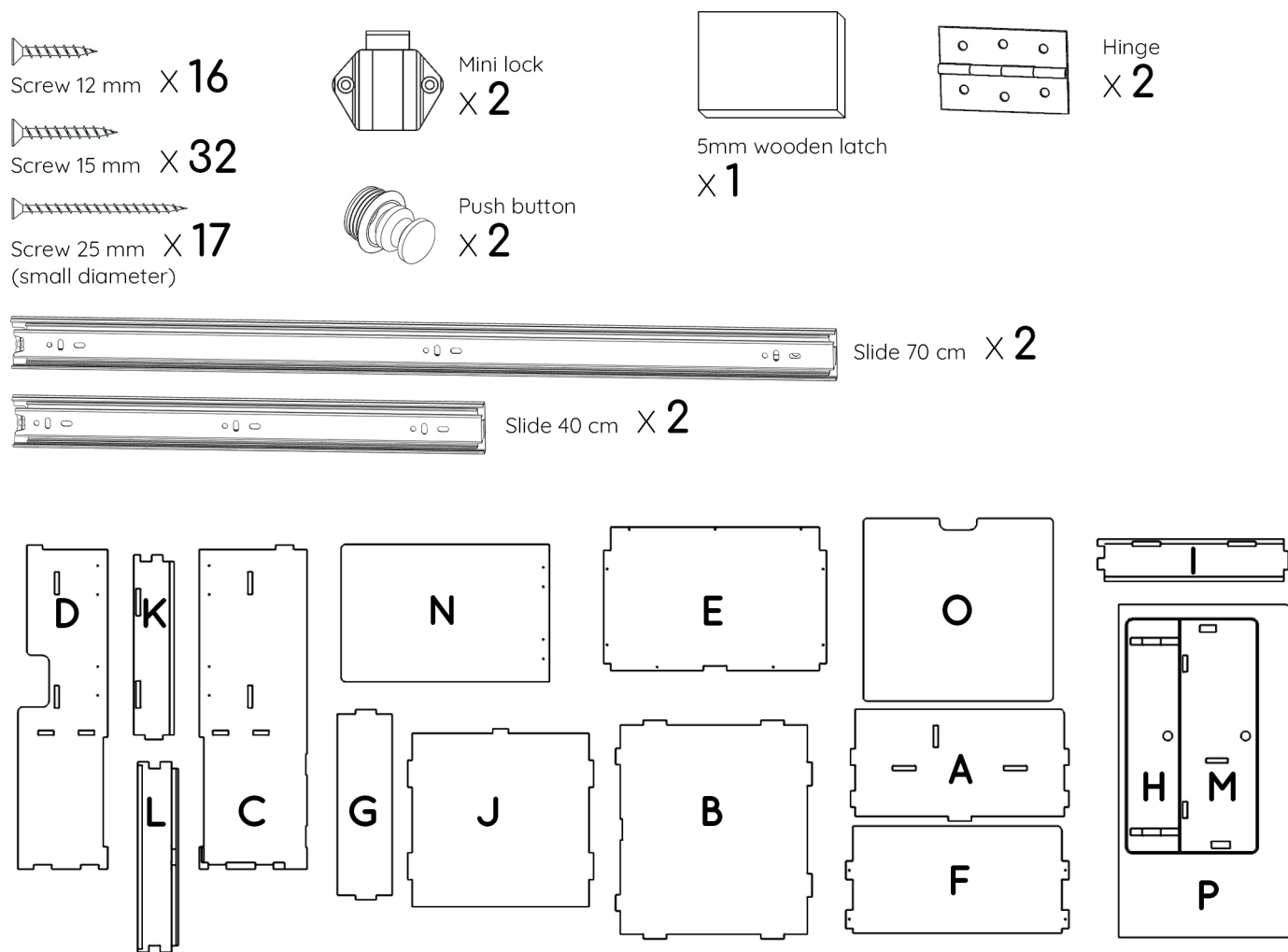
**Best content wins awesome prizes.**



# Materials required for assembly

- Masking tape
- Square (optional)
- PZ1 & PZ2 screwdriver
- Wood glue (slow-drying recommended)
- Damp cloth (or paper towel)
- Putty knife or ruler (for positioning hinges)
- Pencil (for marking hinge placement)

## Package contents :



## Read before assembling the furniture

- Check for chips in the grooves
- Check that the parts are free of defects before gluing / or make a dry fitting
- Read the entire instructions carefully before final assembly with glue
- Wipe off excess glue with a damp cloth immediately after gluing each piece
- Make any cuts (if necessary) before gluing the furniture
- Protect the surrounding areas of the gluing areas with masking tape to reduce cleaning

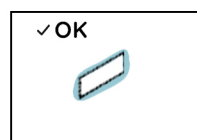
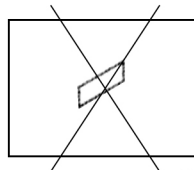
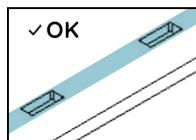
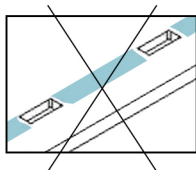
If you have a problem with a part or accessory, please contact us by email: [sav@simplevans.eu](mailto:sav@simplevans.eu)



Apply a sufficient amount of glue to the contact surfaces and grooves.

The glue should **slightly protrude from the grooves when assembled**.

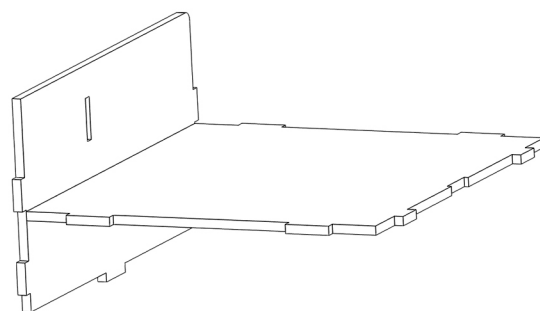
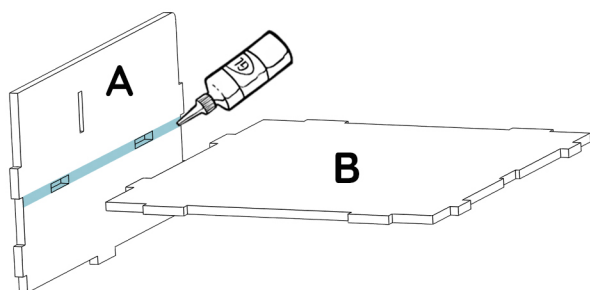
**Wipe off excess glue** with a damp cloth after assembly.



glue that slightly protrudes  
after assembly

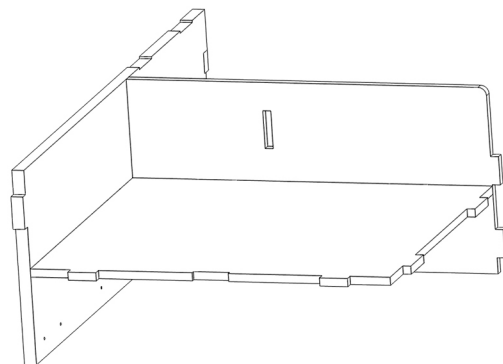
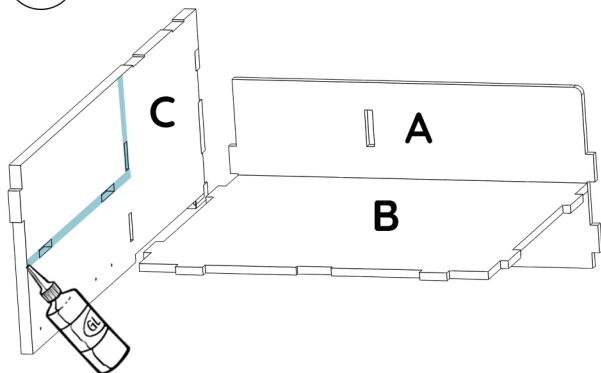
1

Apply glue and assemble parts **A** and **B**. Carefully follow the installation direction below.



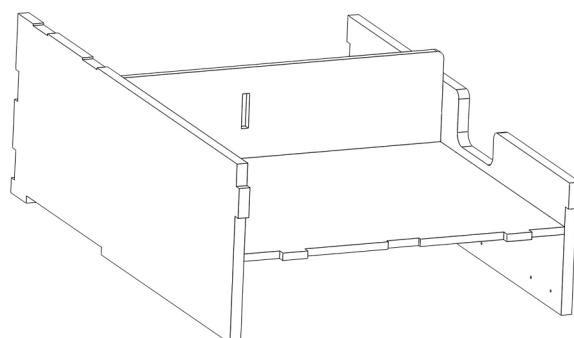
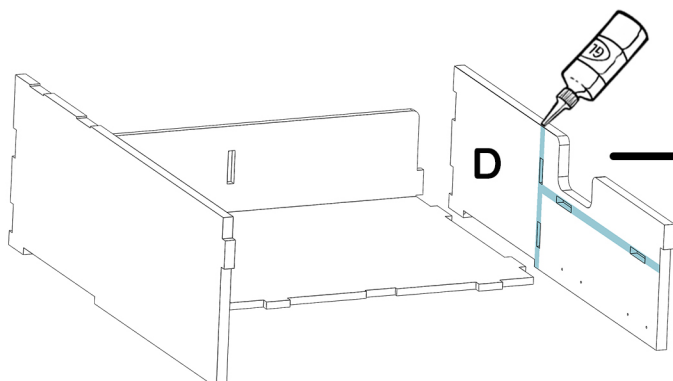
2

Apply glue and assemble parts **A/B** with part **C**.



3

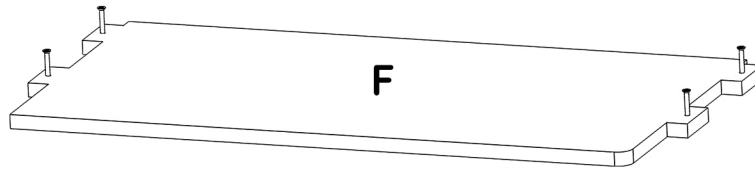
Apply glue and assemble part **D** with the rest of the drawer.



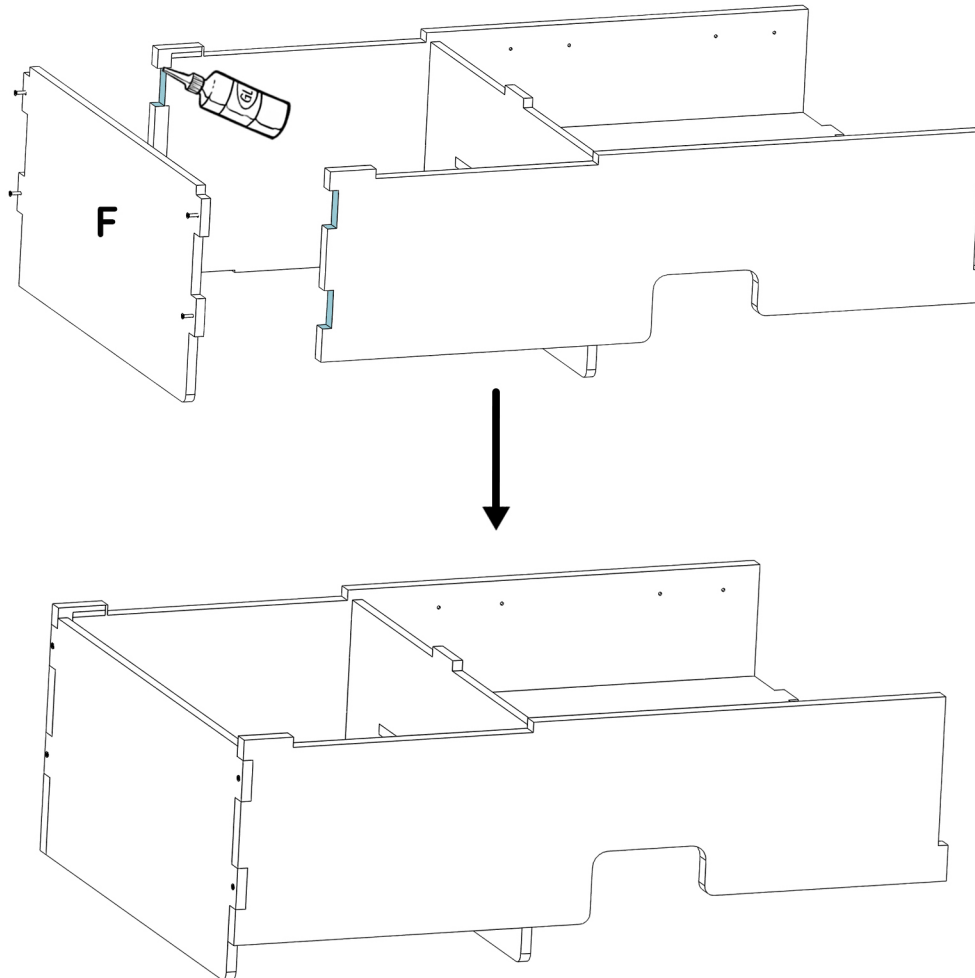


## LARGE DRAWER ASSEMBLY

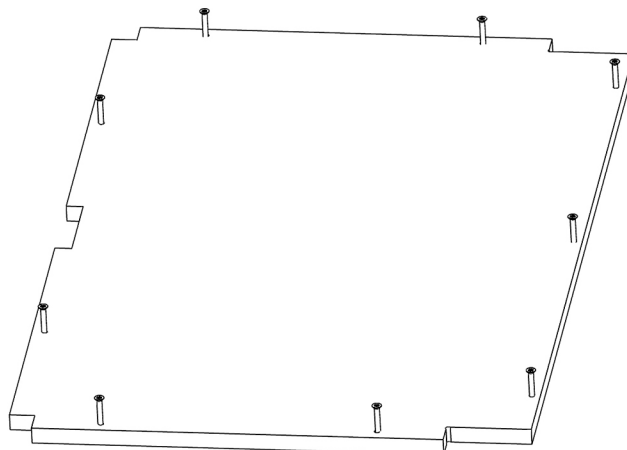
- 4** Pre-screw the 25mm thin screws onto part **F** as below.



- 5** Apply glue and assemble part **F** to the rest of the furniture by tightening the four 25 mm thin screws. **Pay attention to the direction of the part: place the rounded corner on the same side as part A.**

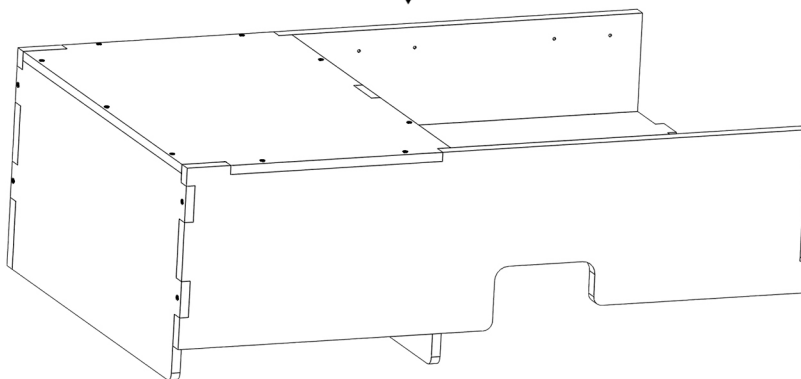
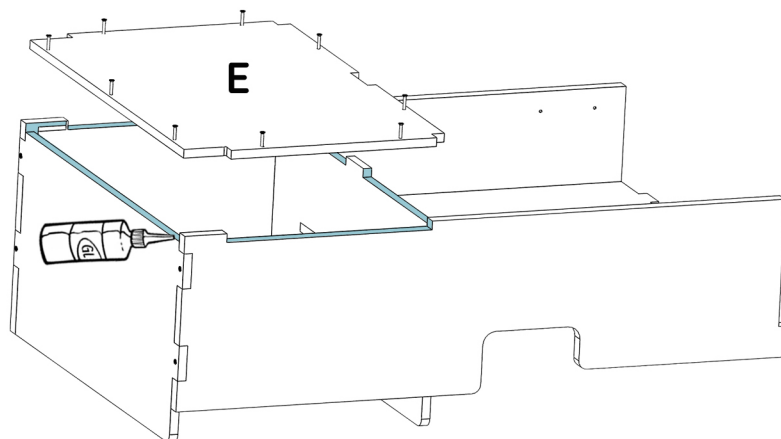


- 6** Pre-screw the 25mm thin screws onto part **E** as below.

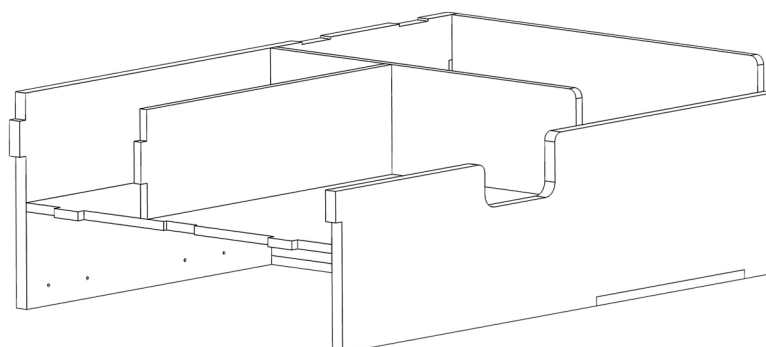
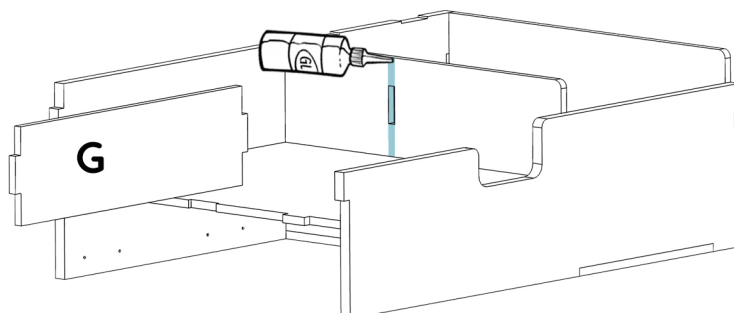


## LARGE DRAWER ASSEMBLY

- 7** Apply glue and assemble part **E** with the rest of the drawer by screwing in the 25 mm thin screws.

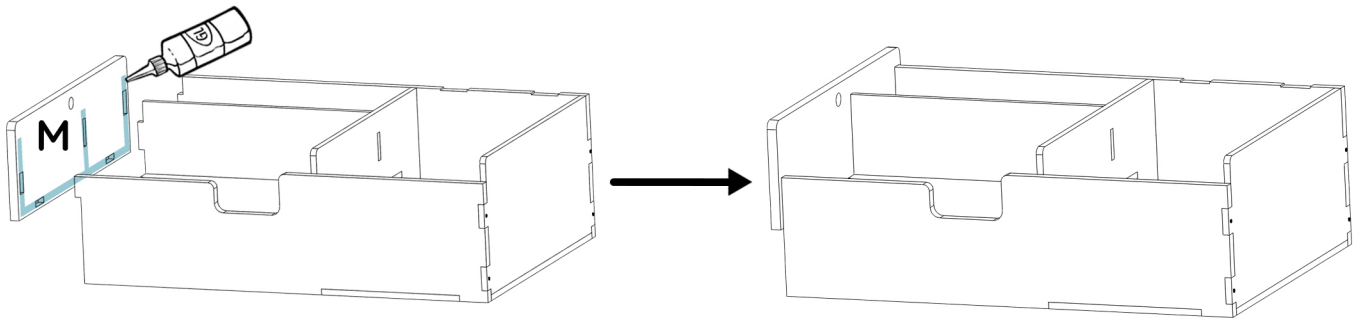


- 8** Apply glue and assemble part **G** as below.

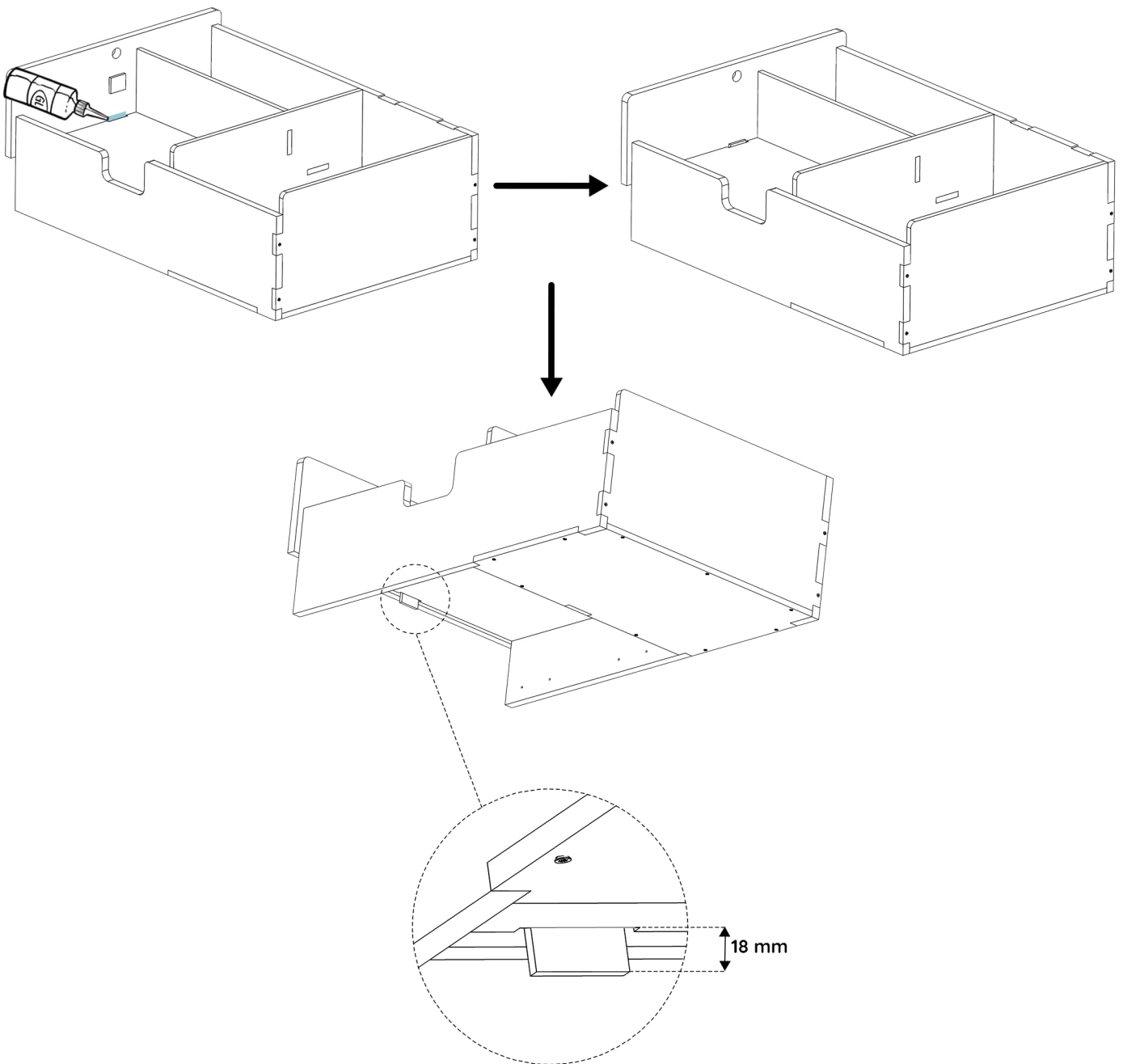


# LARGE DRAWER ASSEMBLY

- 9 Apply glue and assemble part **M** with the rest of the drawer.



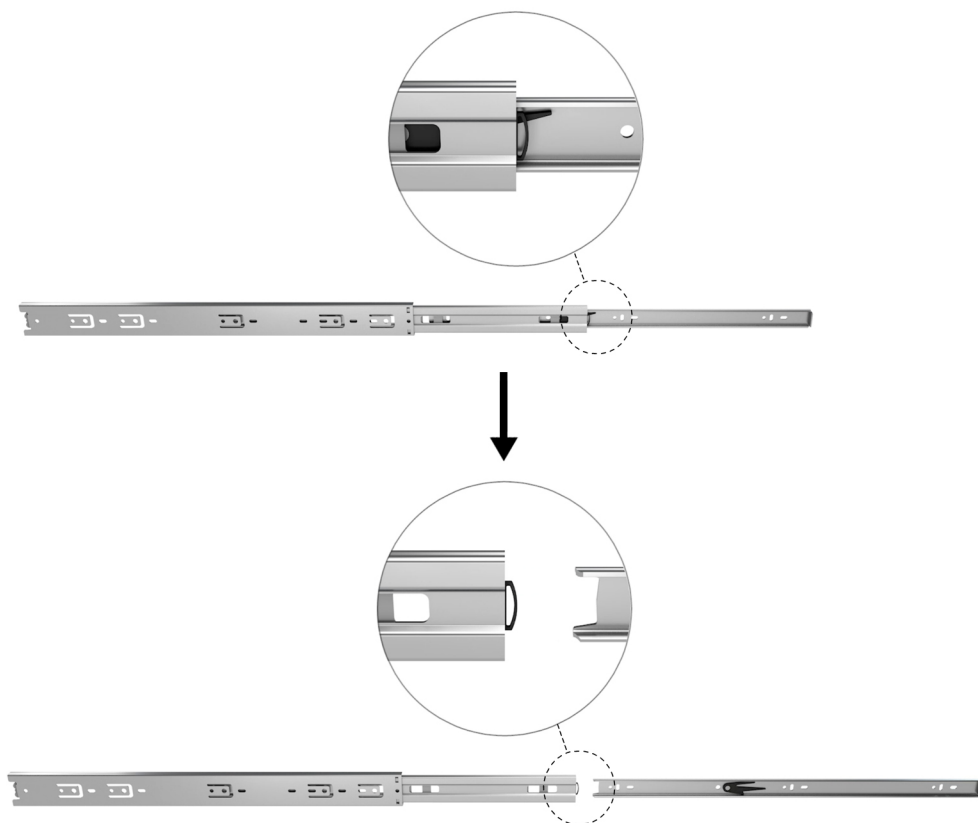
- 10 Apply glue and insert the 5 mm **wooden latch** into the slot provided. It should protrude 18 mm.



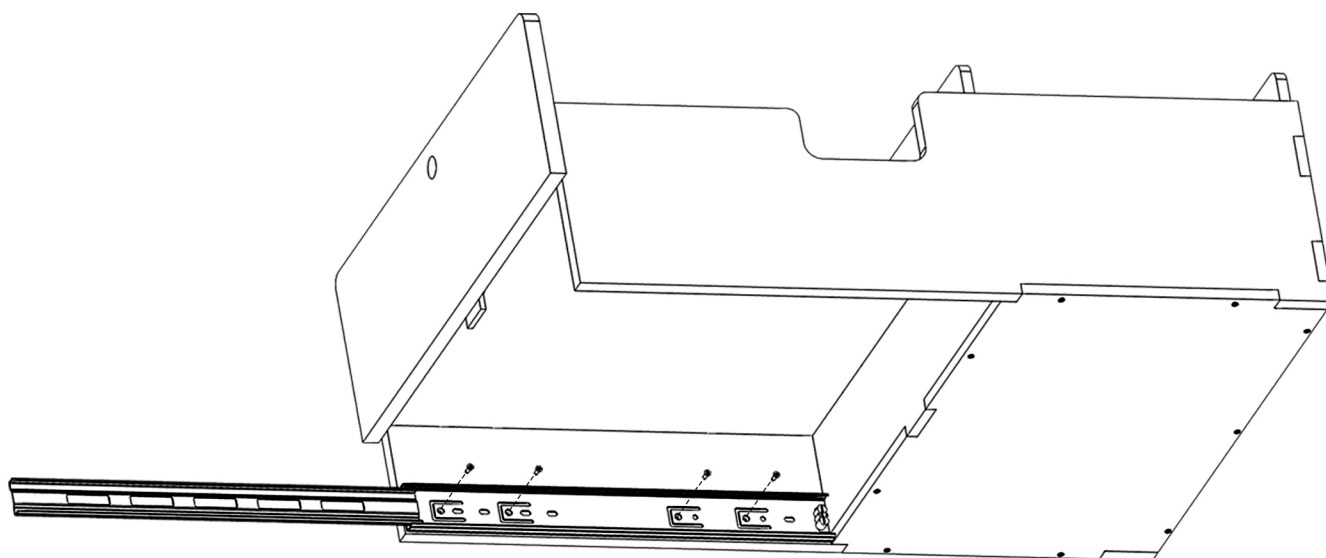
## LARGE DRAWER ASSEMBLY

### 11 Assembling the slides on the large drawer

- 11.1** Disassemble the slides into 2 parts by pulling them as far as possible and unlocking them using the black part.



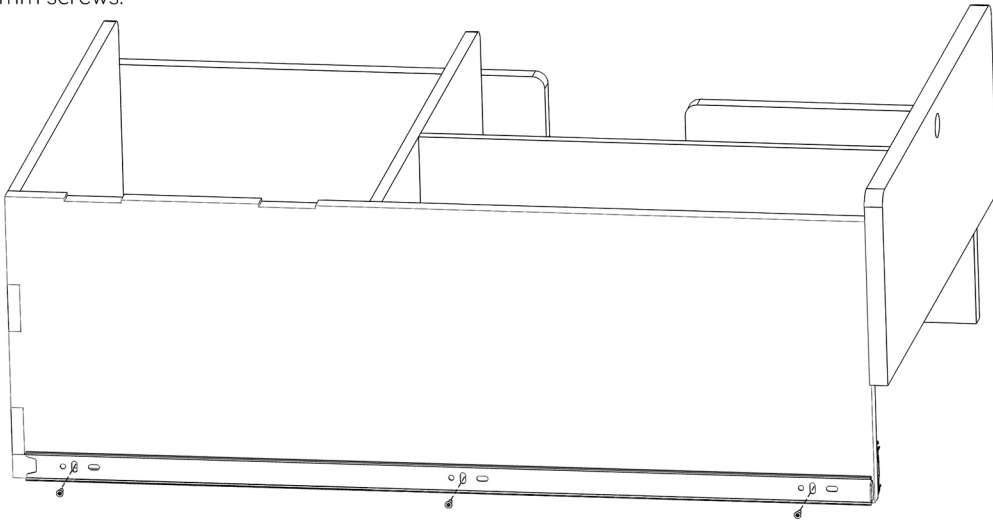
- 11.2** Position the 40 cm slides of the small drawer on the interior sides of the large drawer as shown in the photo below and screw each one using 4 15 mm screws in the pilot holes provided.



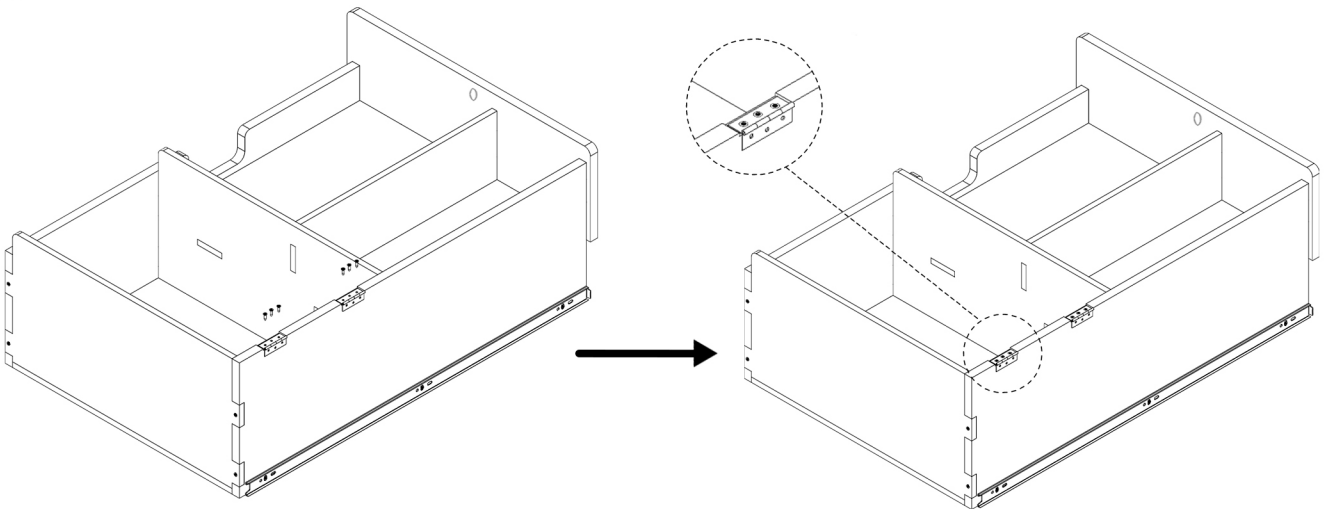


# LARGE DRAWER ASSEMBLY

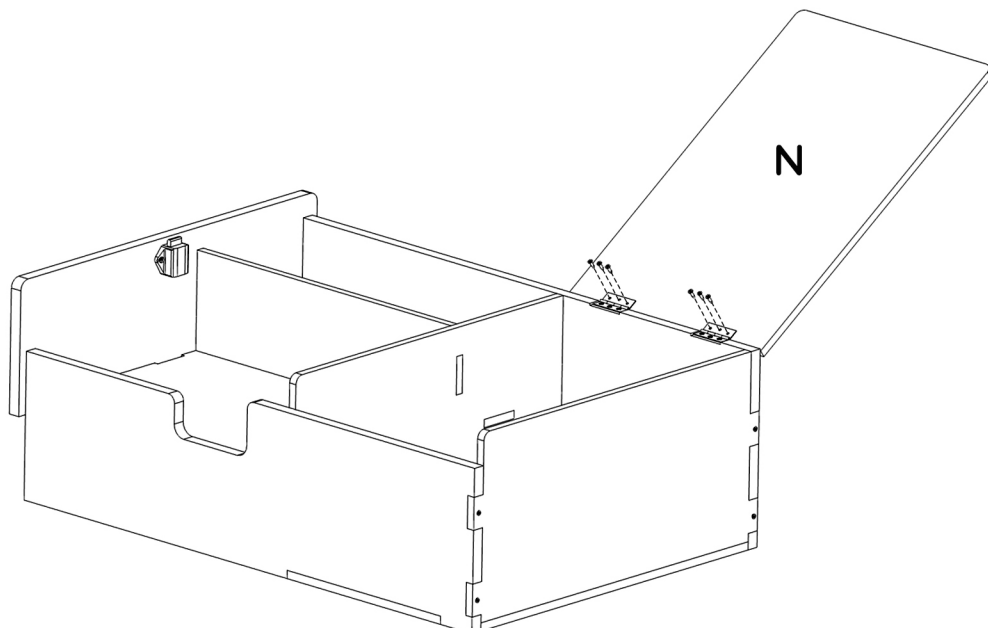
- 11.3** Position the 70 cm slides on the outer sides of the large drawer as shown below and screw each one in place using four 15 mm screws.



- 11.4** Position the hinges in their locations and screw in place using 12 mm screws.



- 11.5** Position part N correctly and screw the hinges using 12 mm screws.

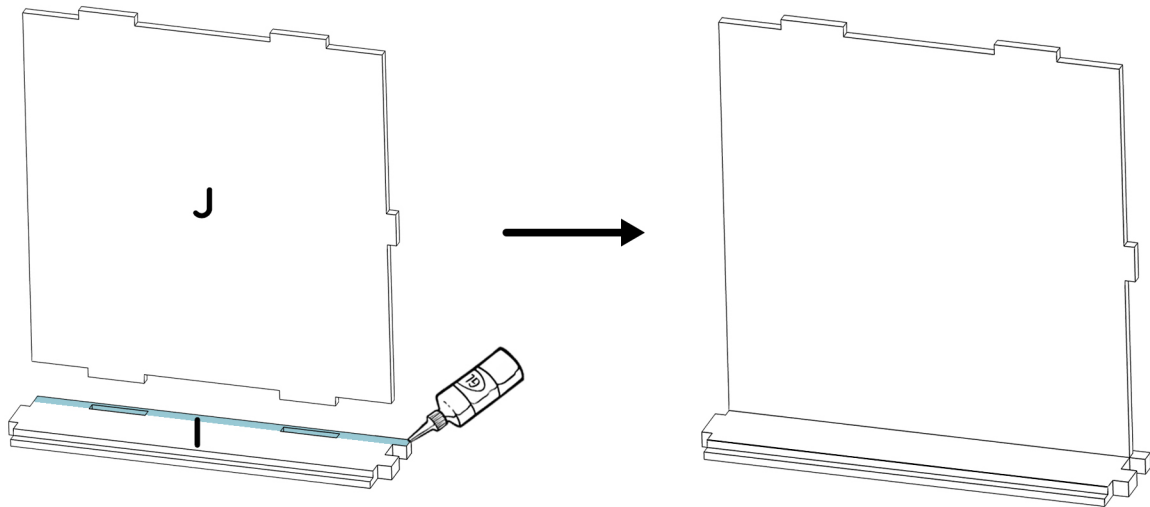


# SMALL DRAWER ASSEMBLY

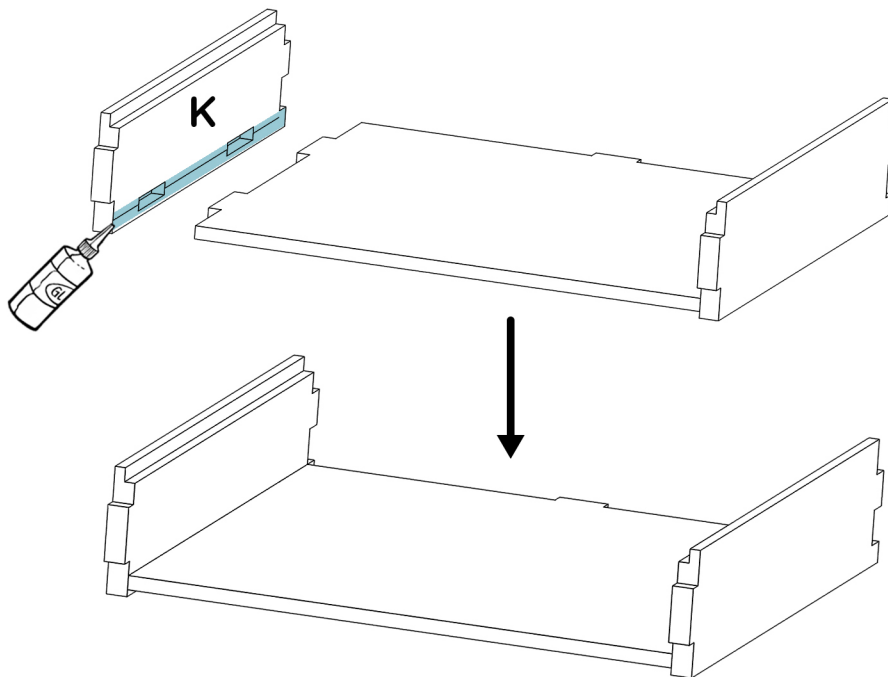


Estimated time: 20 min

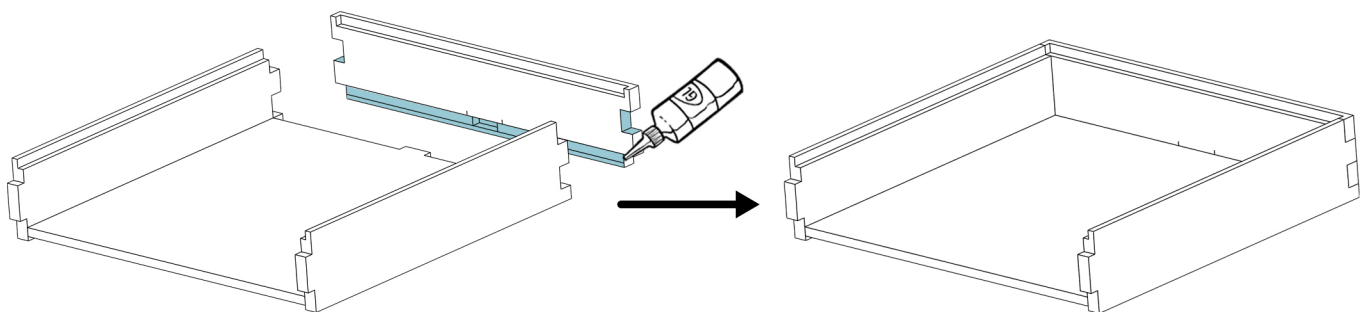
- 1 Apply glue and assemble parts **I** and **J** together.



- 2 Apply glue and assemble part **K** with the rest of the drawer as below.

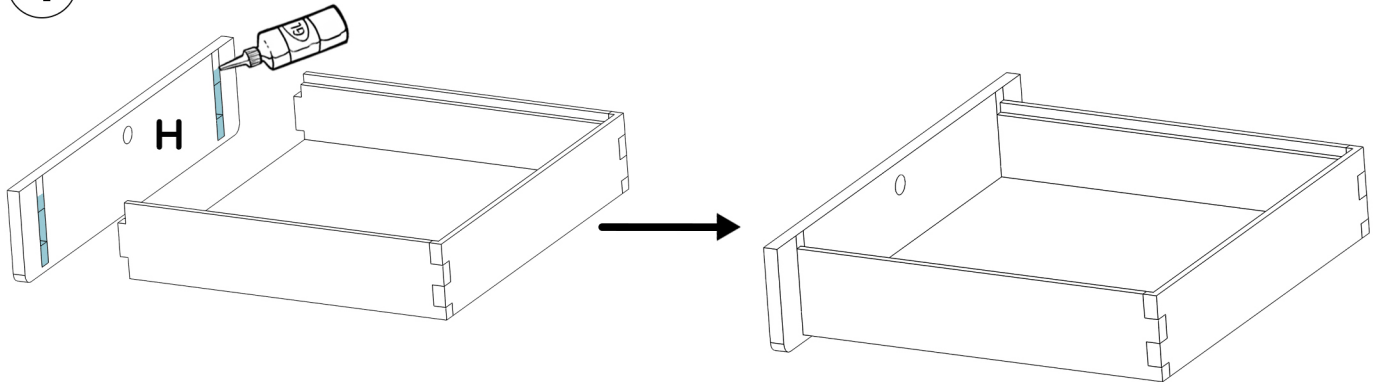


- 3 Apply glue and assemble part **L** as below.

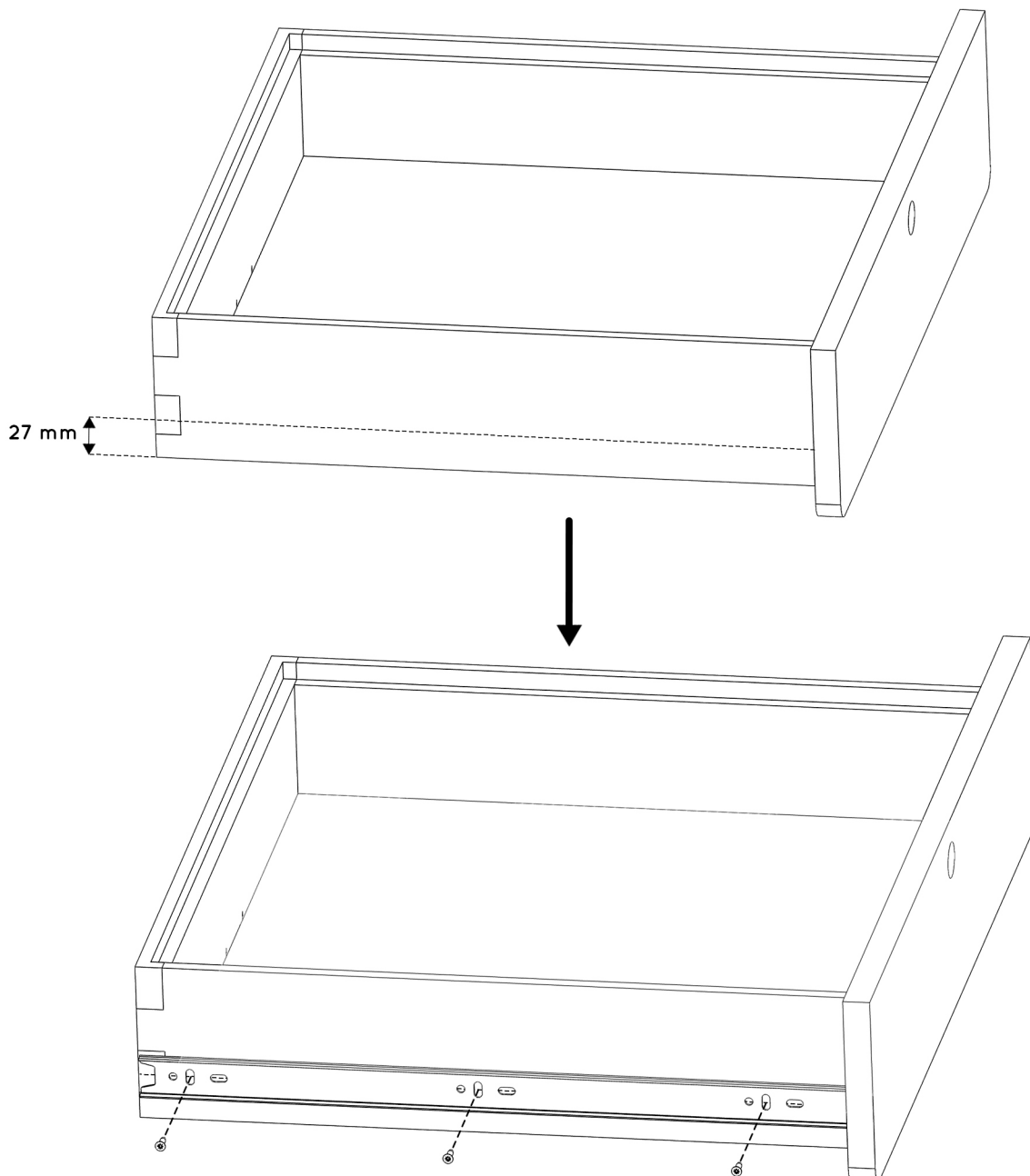


## SMALL DRAWER ASSEMBLY

- 4** Apply glue and assemble part **H** as below.



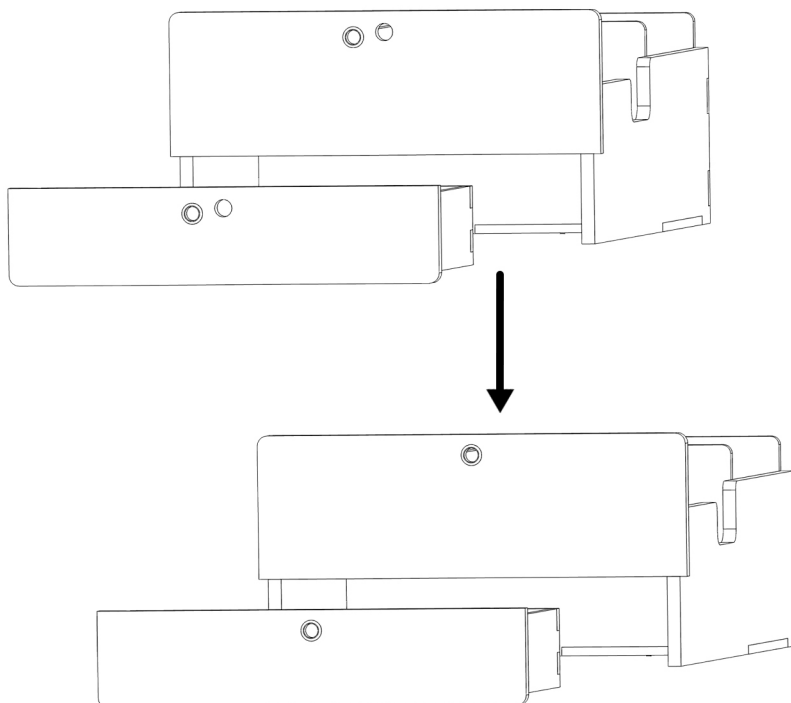
- 5** Draw a line with a pencil 27 mm from the bottom edge of the drawer, then position the 40 cm slides in line with this line and screw each one in place using 3 15 mm screws.



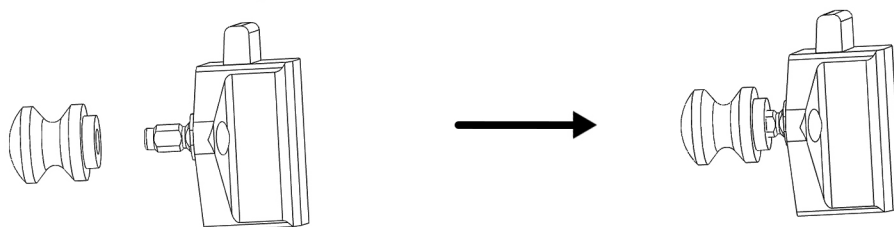


## 1 Installing push locks

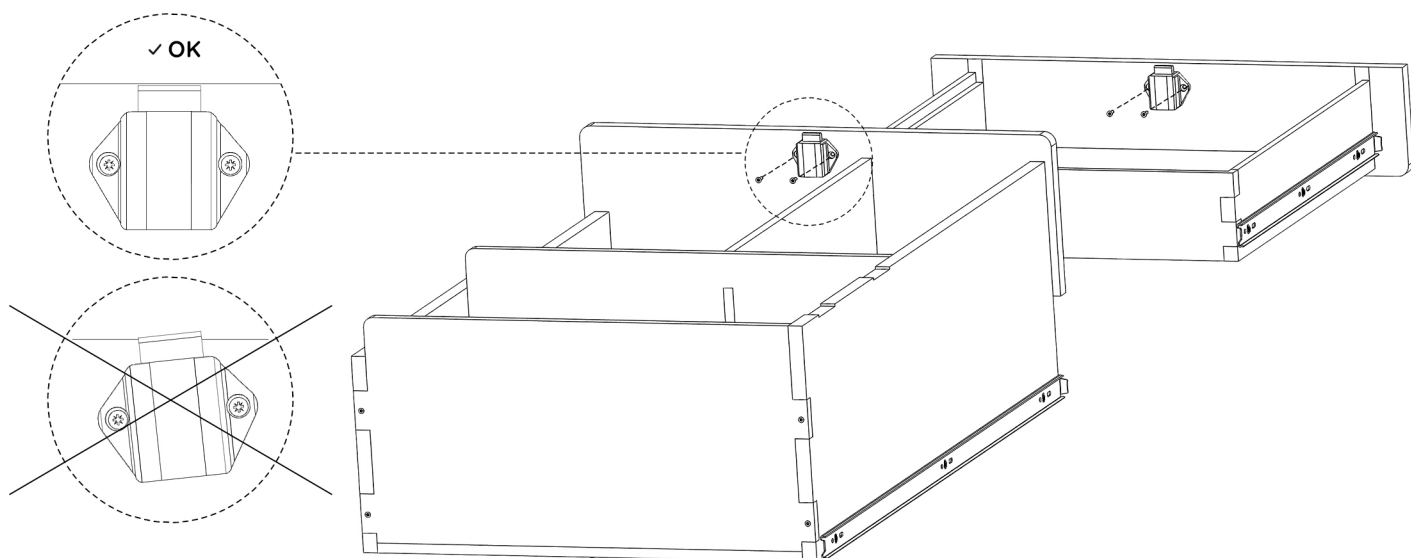
**1.1** Forcefully insert the push lock rosettes onto the drawer fronts.



**1.2** Screw the buttons onto the push locks.



**1.3** Screw the push locks into the front panels with two 12 mm screws. Make sure they are aligned with the edge of the front panel.





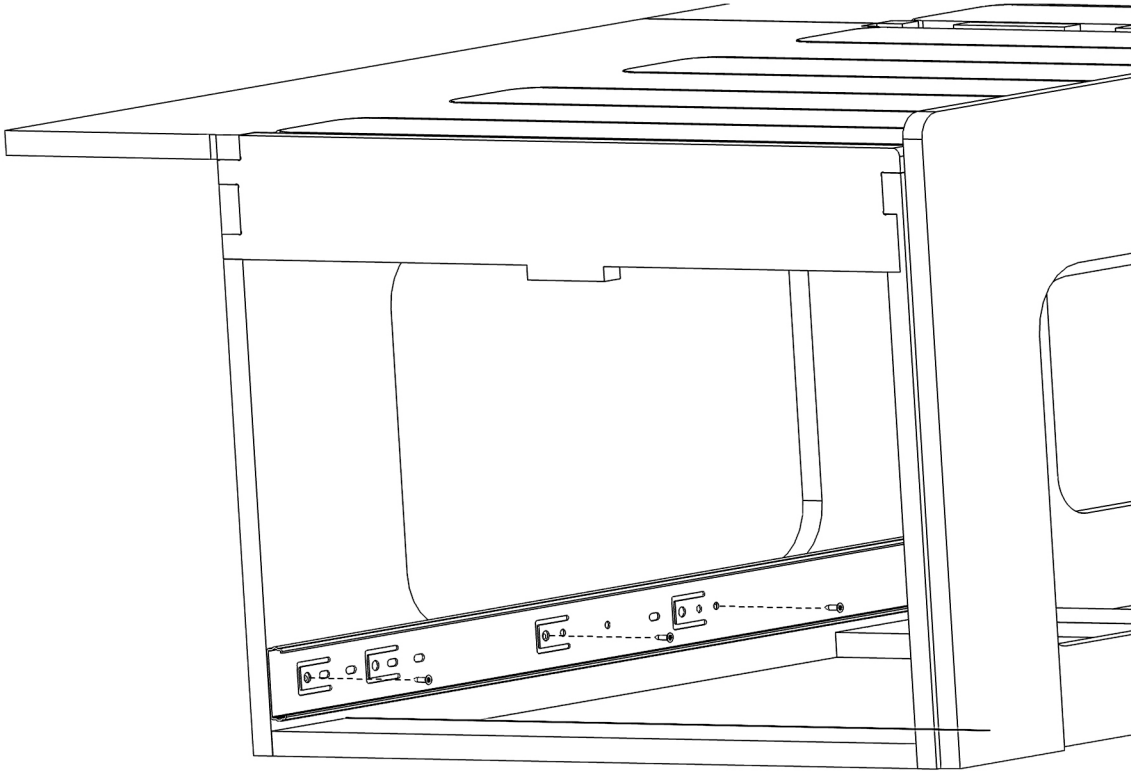
## PUSH LOCKS, SLIDE SUPPORTS & FACADE

### 2 Installing the slide supports on the bed

Two possibilities: depending on whether you have positioned the 60 cm or 120 cm part of your bed at the back of the van.

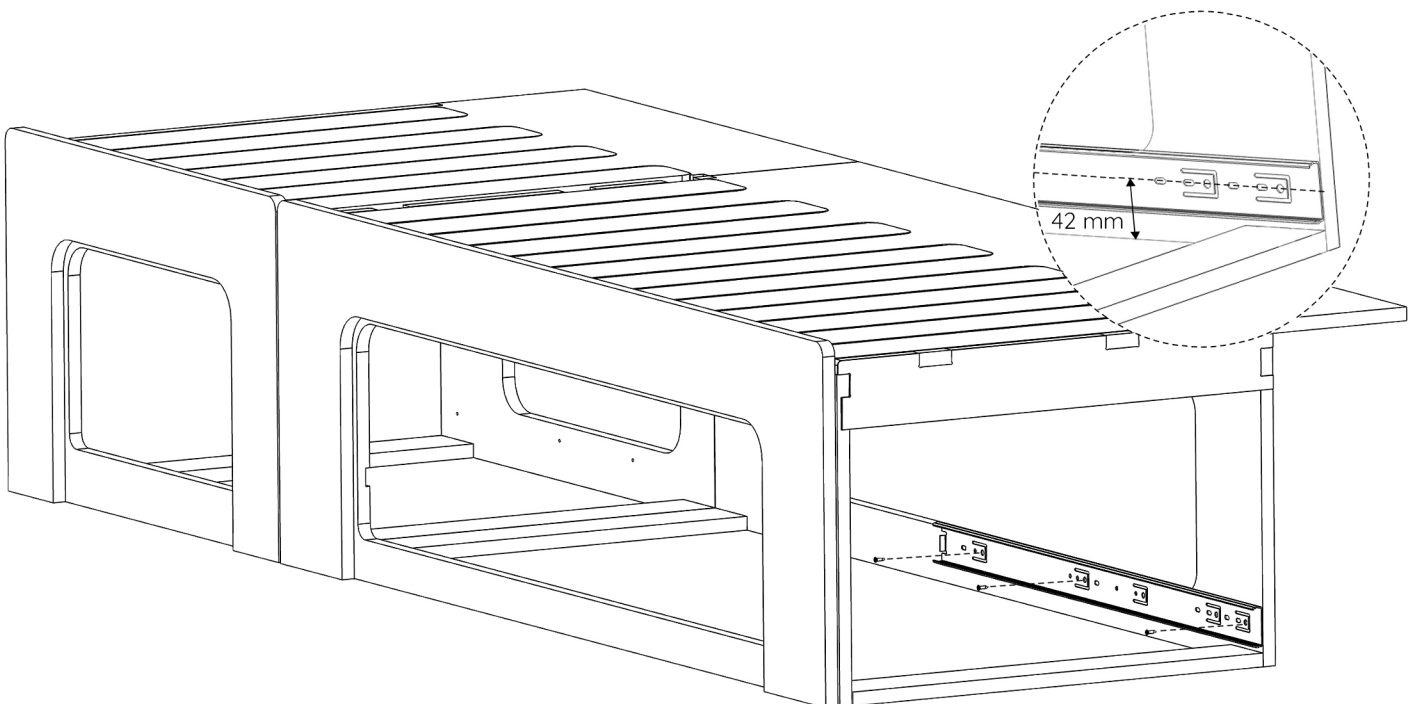
#### 2.1 60 cm section at the rear of the van

Screw the 70 cm slides into the pilot holes of the bed frame with 15 mm screws.



#### 2.2 120 cm section at the rear of the van

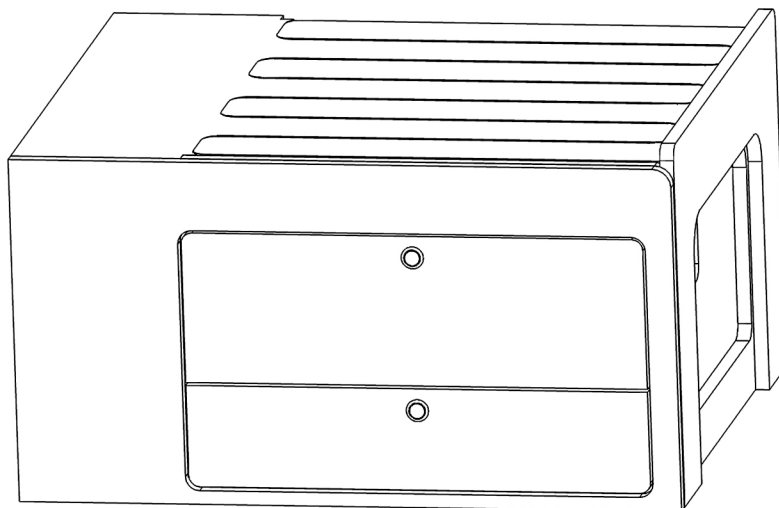
Place the slides parallel to the floor as below at a height of 42 mm (axis of the slide along the length) and screw each slide with 15 mm screws.



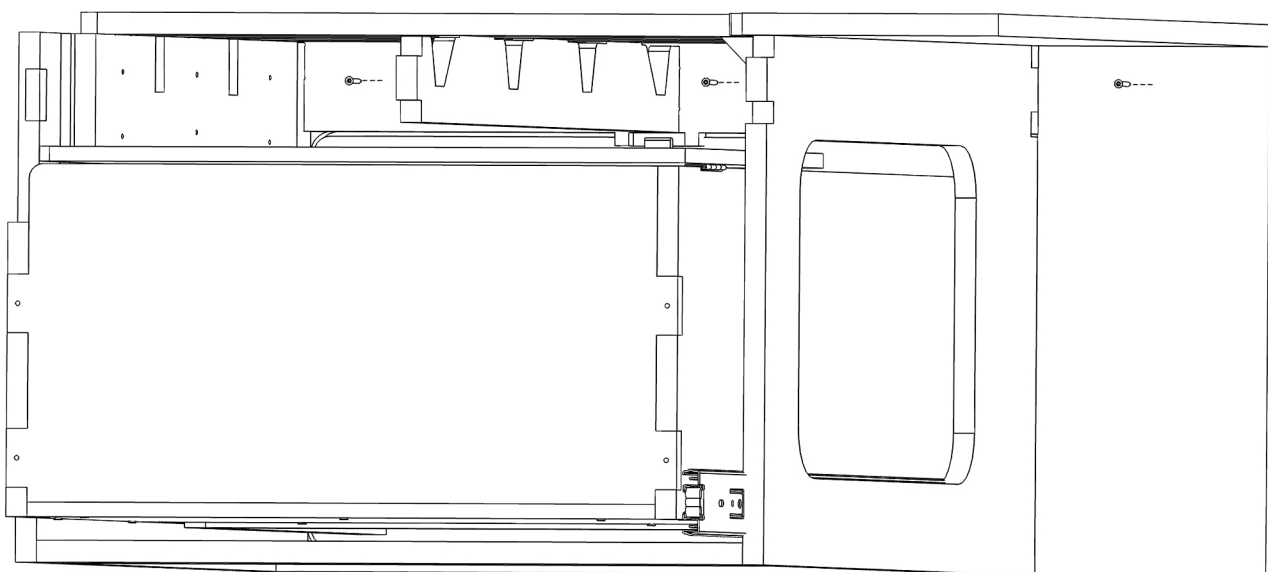
## PUSH LOCKS, SLIDE SUPPORTS & FACADE

### 3 Installation of the bed facade

- 3.1** To fix the front you must have installed your drawer in the bed and you must then **center** it in relation to the drawer fronts.



- 3.2** Secure the front panel from the inside using three 25mm screws as shown below. You can also glue it and/or add a bracket to the back.



# HAPPY ASSEMBLY!

If you have any comments regarding the assembly,  
you can let us know by email:  
**sav@simplevans.eu**

**ALL  
TUTORIALS →  
HERE**



## SHARE YOUR EPIC VAN BUILD JOURNEY WITH US AND THE COMMUNITY!

#SimpleVansLife

**Snap some pics or record a video of your awesome furniture  
installed and ready for adventure.**

We'll feature the best content on our social media channels,  
and the most inspiring builds will win incredible prizes!

