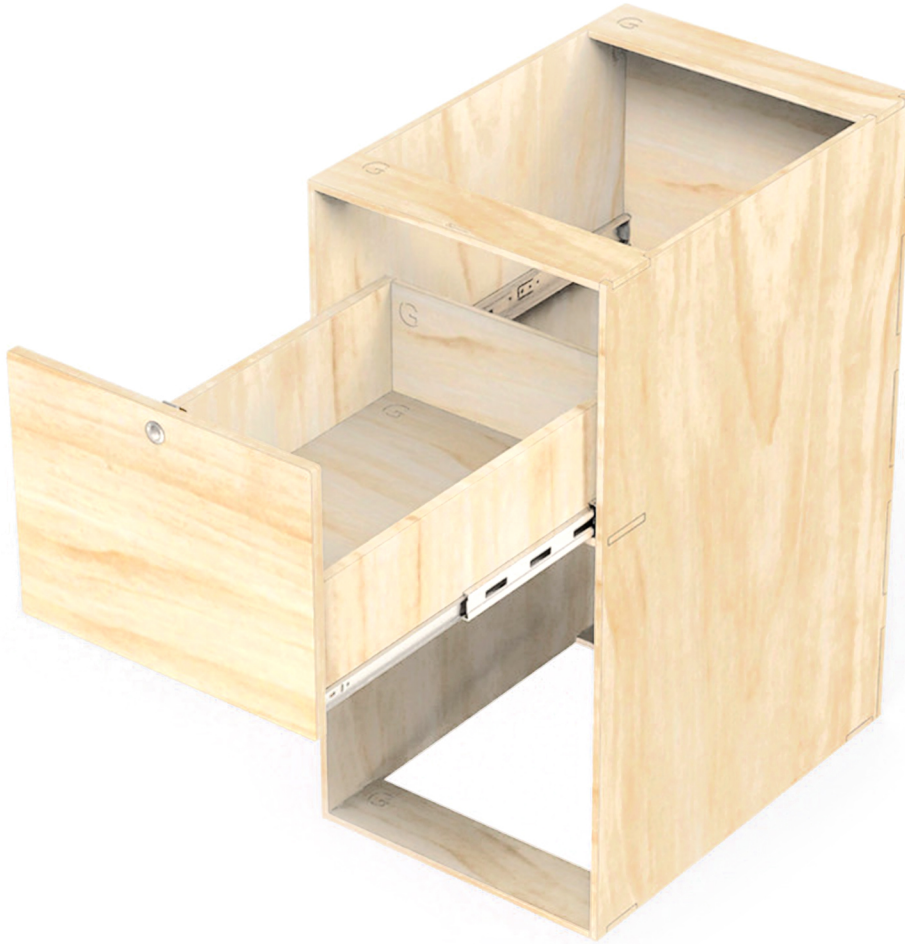


Assembly guide

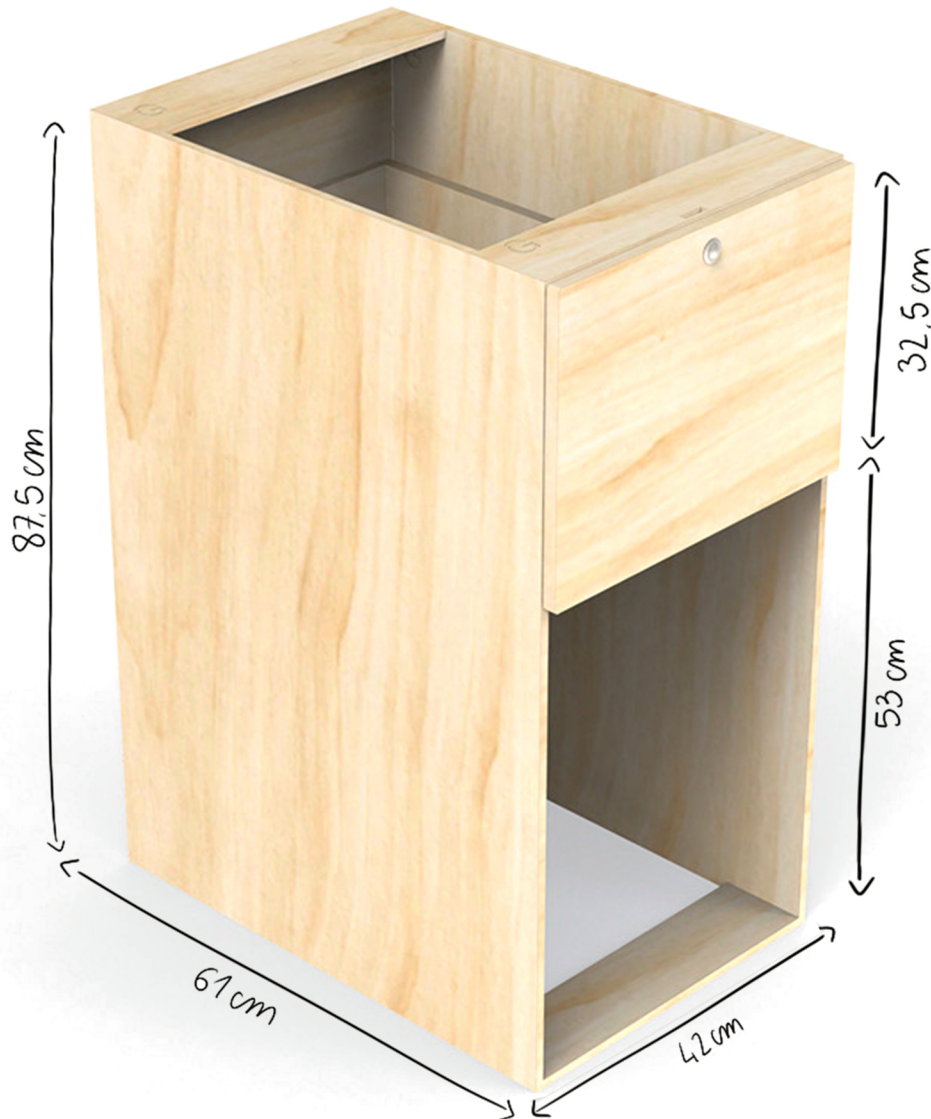
CG Unit



WELCOME ABOARD!

Let's assemble Your dream furniture and get you on the road.

LET'S GO !



SHOW OFF YOUR SKILLS & INSPIRE THE VANLIFE COMMUNITY!

Share your build on Facebook, Instagram ou TikTok.

Use #SimpleVansLife :

Best content wins awesome prizes.



Materials required for assembly

- Masking tape
- Square (optional)
- PZ1 & PZ2 screwdriver
- Wood glue (slow-drying recommended)
- Damp cloth (or paper towel)

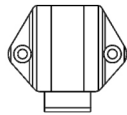
Package contents :



Screw 7 mm large X **6**



Screw 20 mm X **8**



Mini lock

X **1**



Push button

X **1**



Screw 12 mm X **2**



Screw 25 mm X **4**



Drawer slide

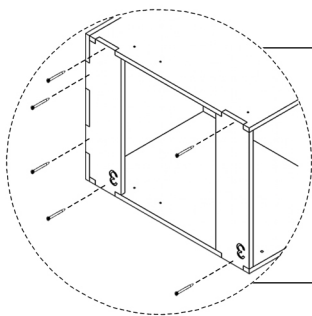
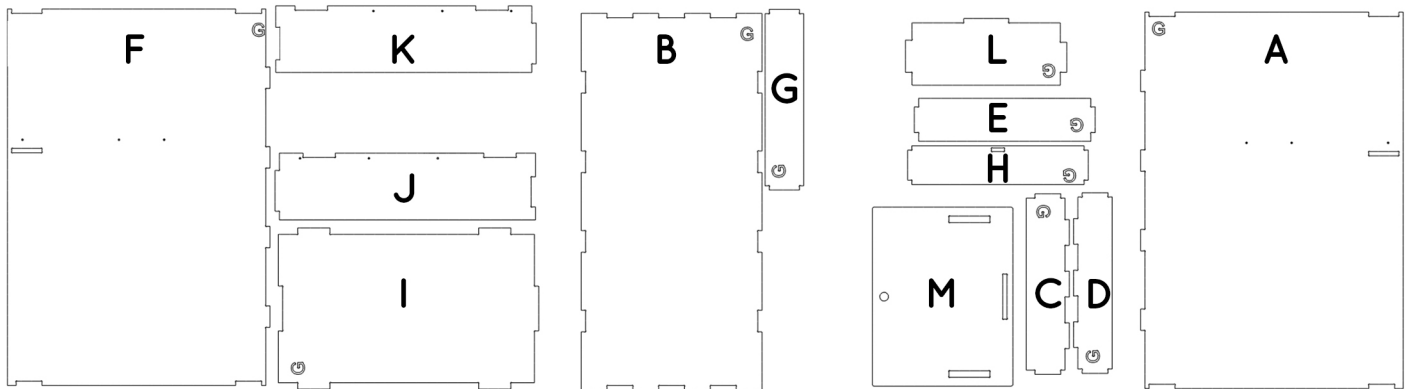
X **2**



Screw 15 mm X **6**



Screw 25 mm small diameter X **28**



ASSEMBLY TIP

We provide **25 mm thin screws** that you can add to the hidden sides of the furniture to simplify and strengthen assembly.

Read before assembling the furniture

- Check for chips in the grooves
- Check that the parts are free of defects before gluing / or make a dry fitting
- Read the entire instructions carefully before final assembly with glue
- Wipe off excess glue with a damp cloth immediately after gluing each piece
- Make any cuts (if necessary) before gluing the furniture
- Protect the surrounding areas of the gluing areas with masking tape to reduce cleaning

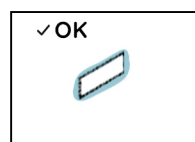
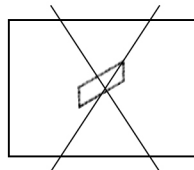
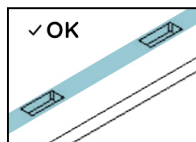
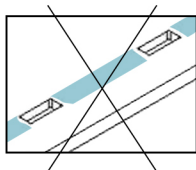
If you have a problem with a part or accessory, please contact us by email: sav@simplevans.eu



Apply a sufficient amount of glue to the contact surfaces and grooves.

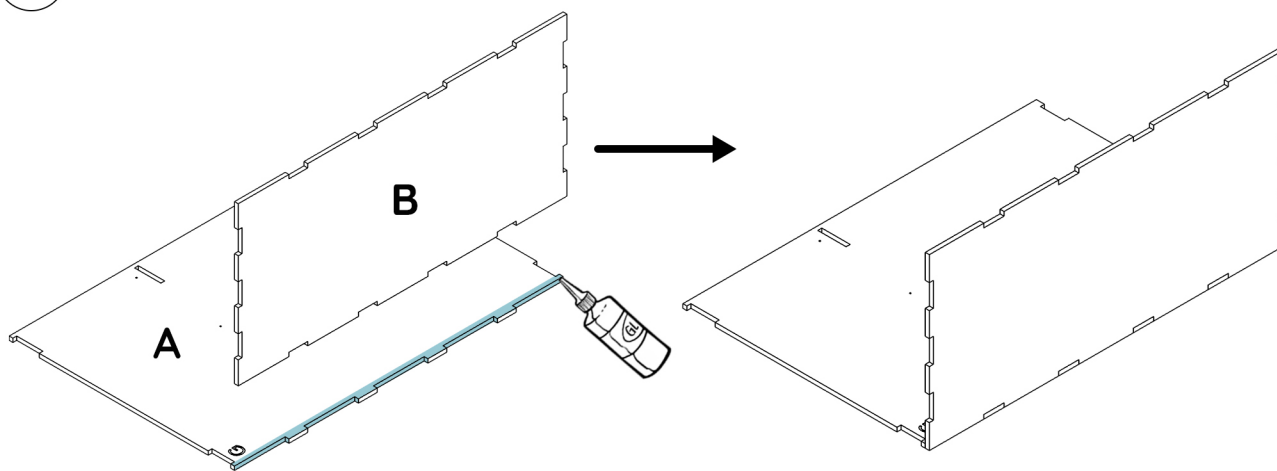
The glue should **slightly protrude from the grooves when assembled**.

Wipe off excess glue with a damp cloth after assembly.

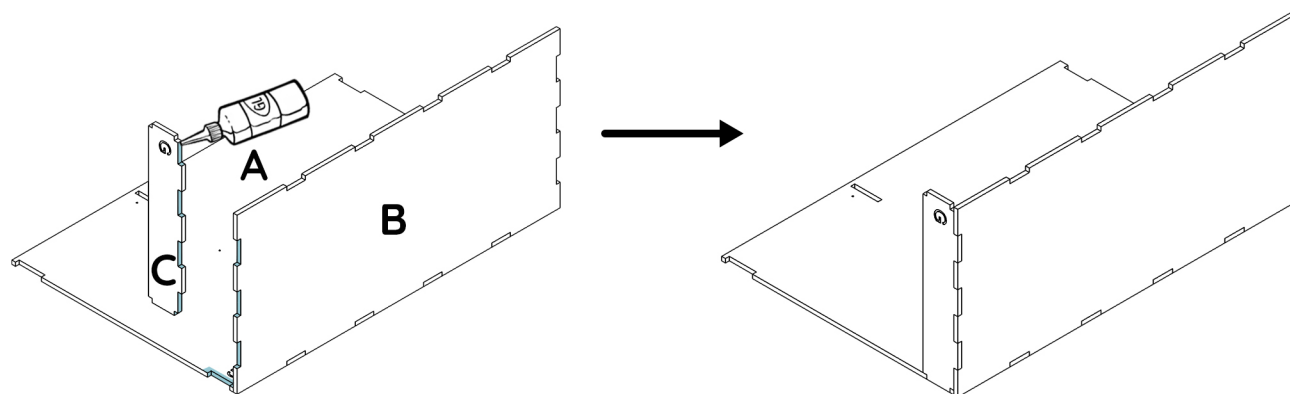


glue that comes out slightly after assembly

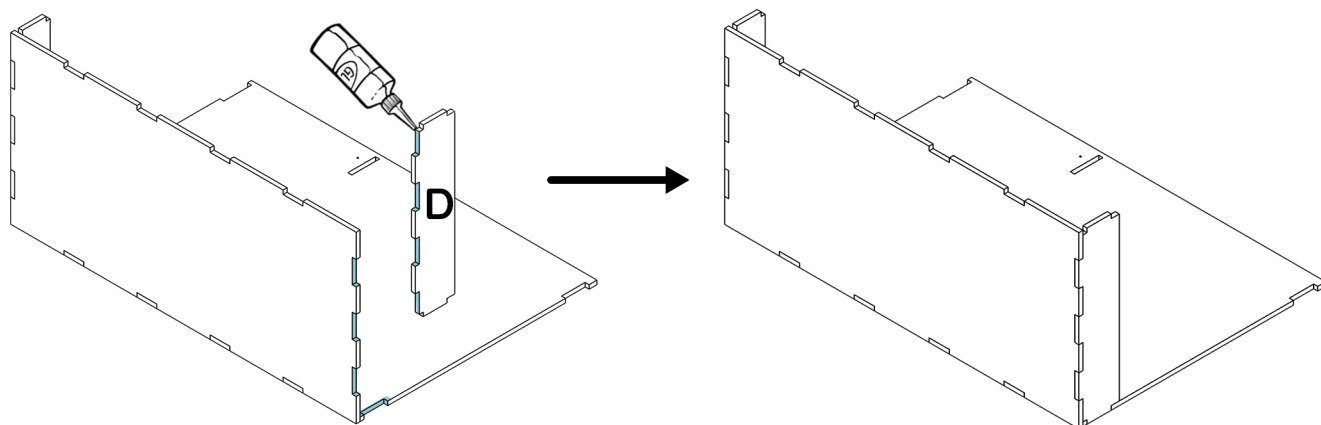
- 1 Apply glue to the notches and joints then assemble parts **A** and **B**.



- 2 Apply glue to the notches and joints then assemble part **C** with the **A/B** assembly.

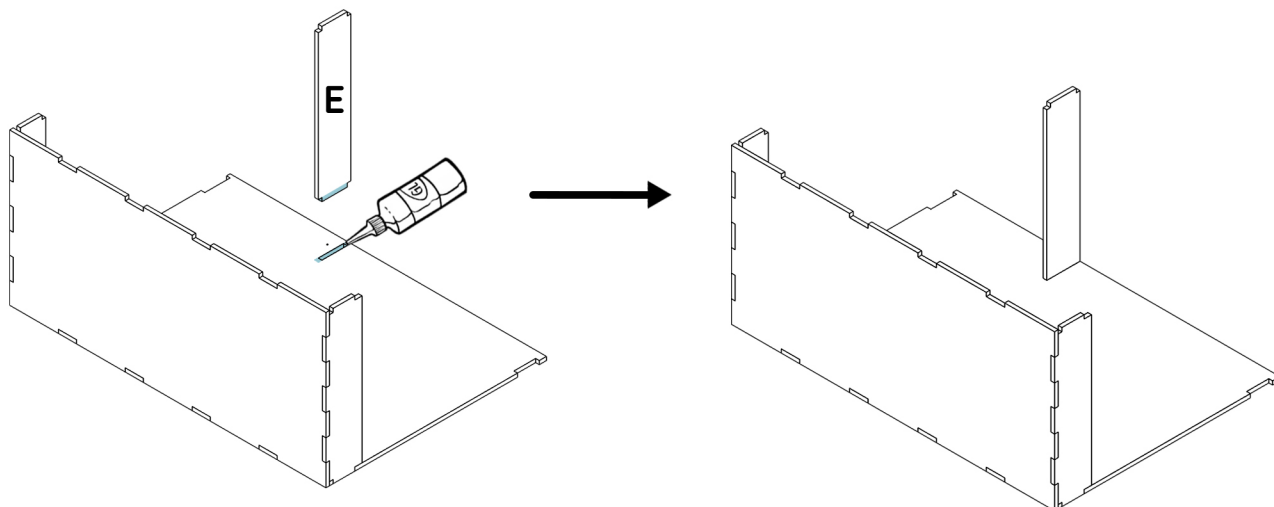


- 3 Apply glue to the notches and joints then assemble part **D** with the rest of the furniture.

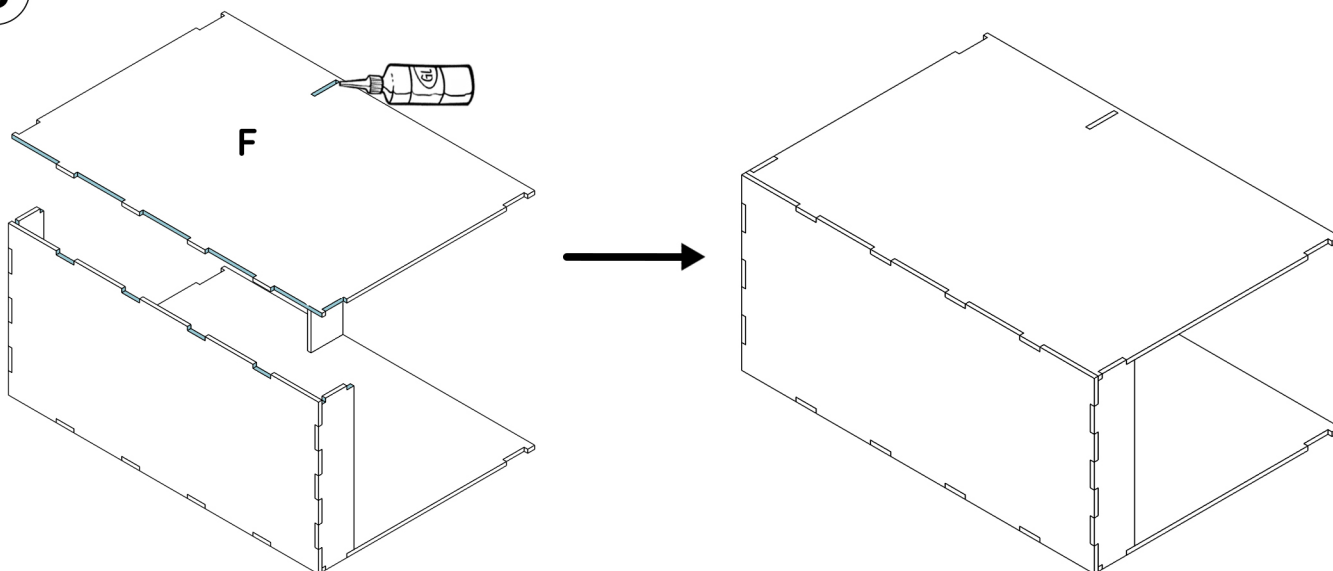


FURNITURE ASSEMBLY

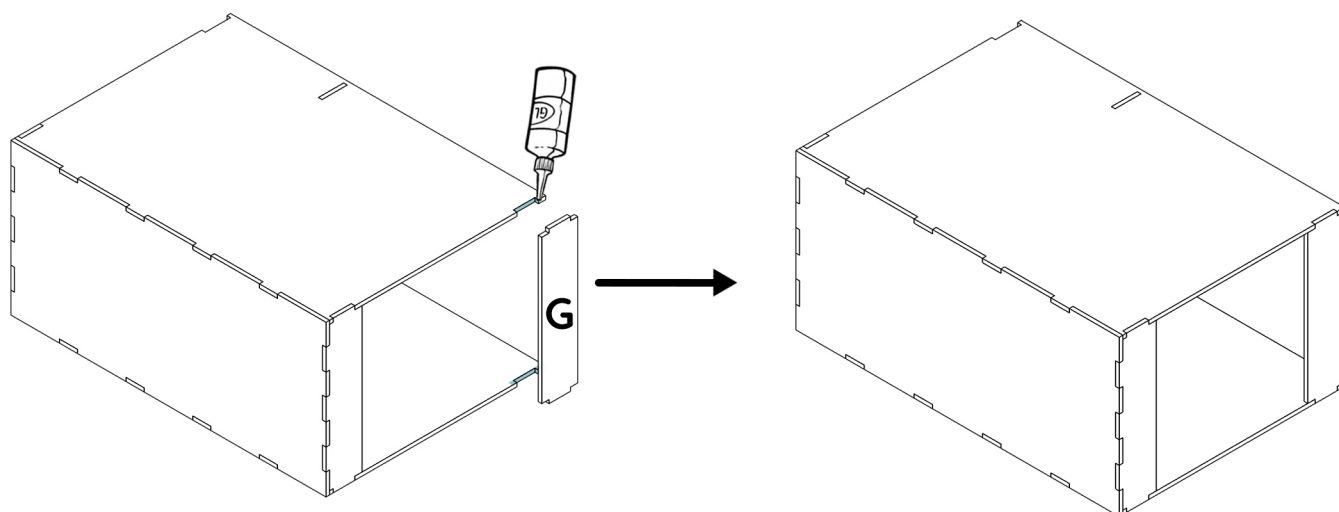
- 4** Apply glue to the notches and joints and assemble part **E** with the rest of the furniture.



- 5** Apply glue to the notches and joints and assemble part **F** with the rest of the furniture.

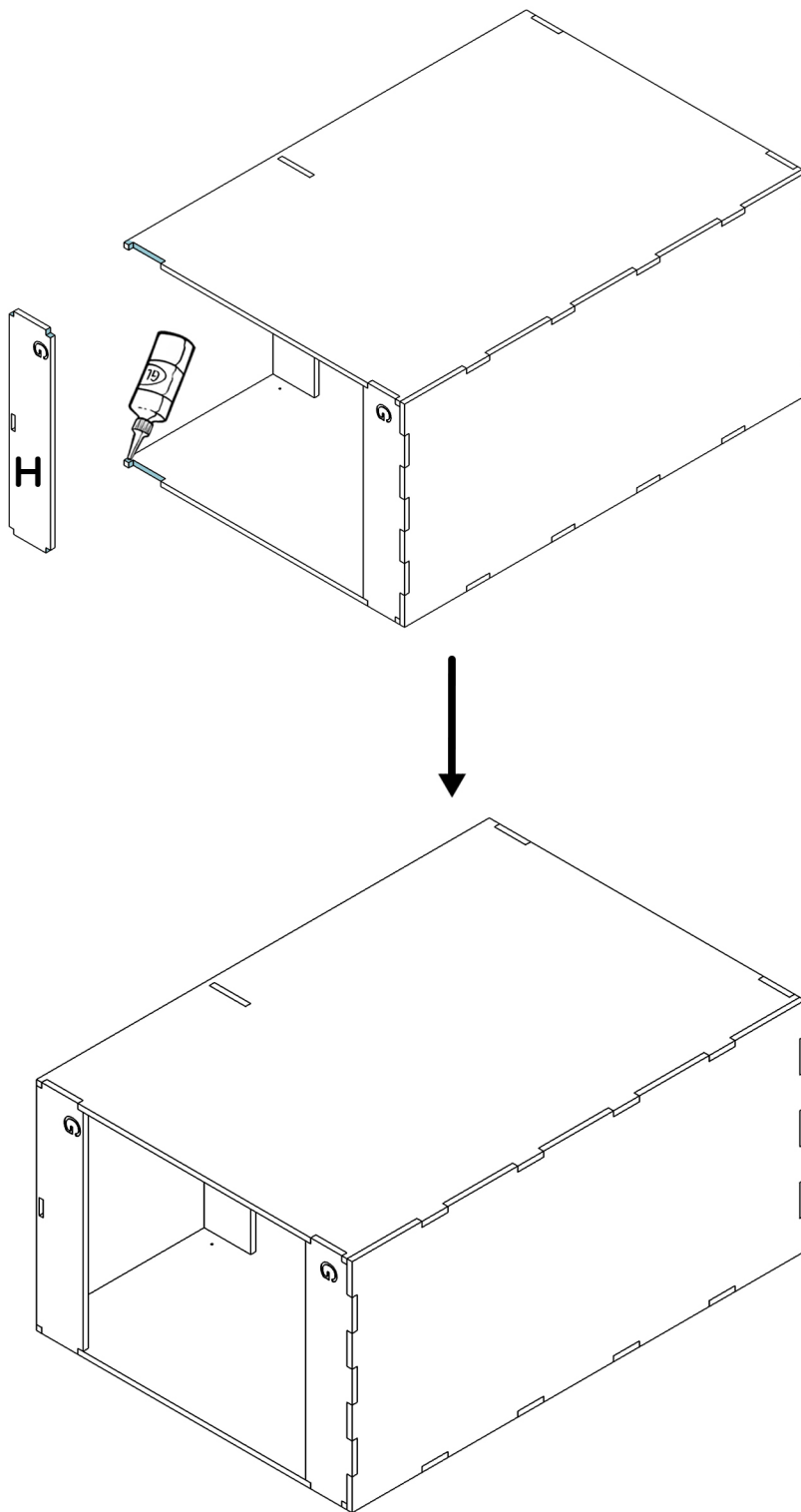


- 6** Apply glue to the notches and joints and assemble part **G** with the rest of the furniture.



FURNITURE ASSEMBLY

- 7** To finish assembling the box, apply glue to the notches and joints then assemble part **H** with the rest of the furniture.



DRAWER & SLIDES ASSEMBLY

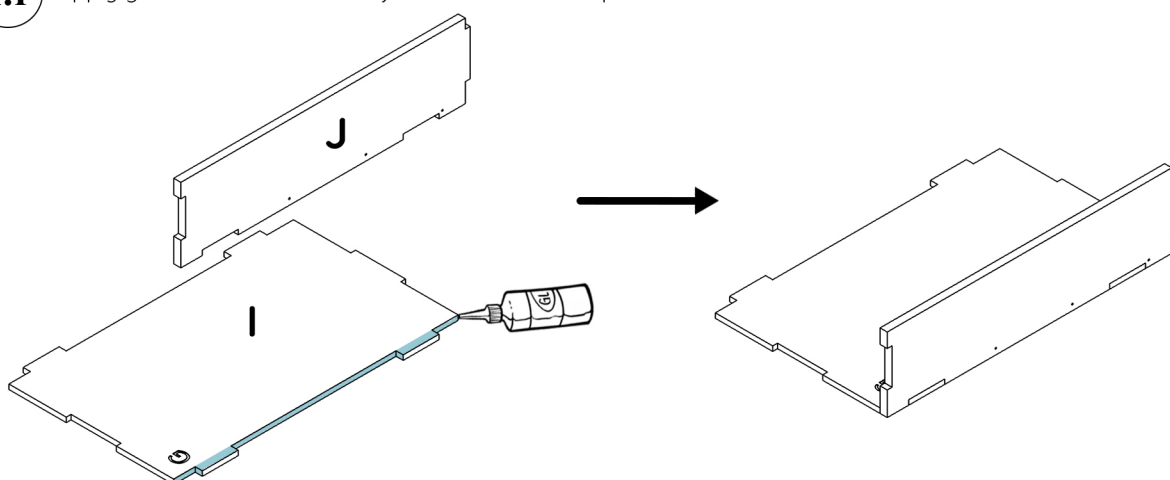


Estimated time: 30 min

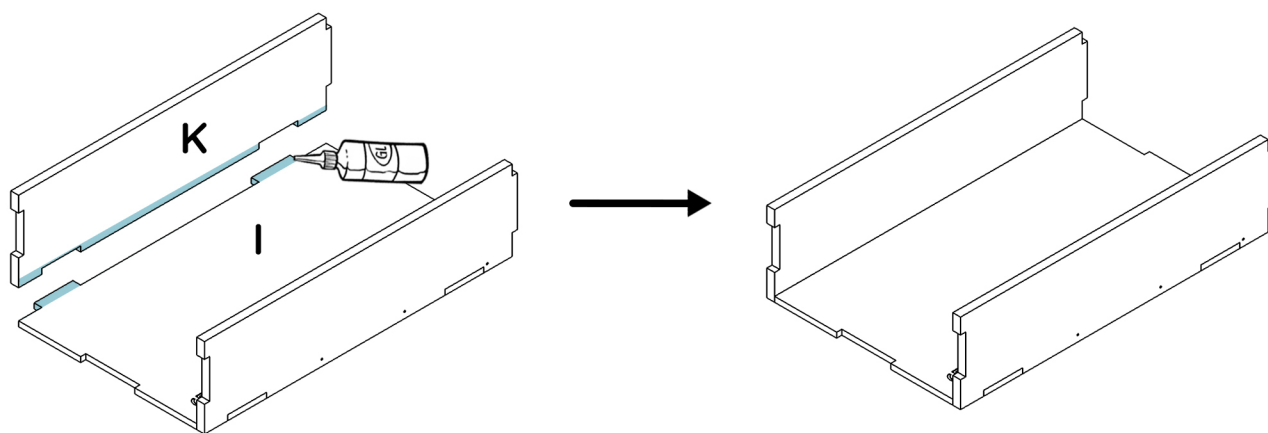
i To simplify and strengthen the assembly, you can screw the hidden sides of the drawer together using the thin 25 mm screws provided.

1 Drawer assembly

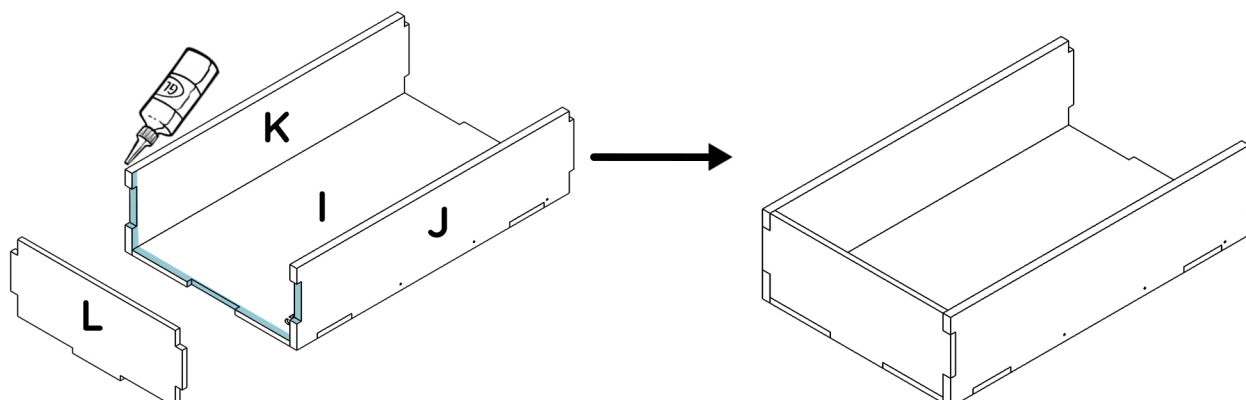
1.1 Apply glue to the notches and joints and assemble parts **I** and **J** as below.



1.2 Apply glue to the notches and joints and assemble parts **I** and **K** as below.

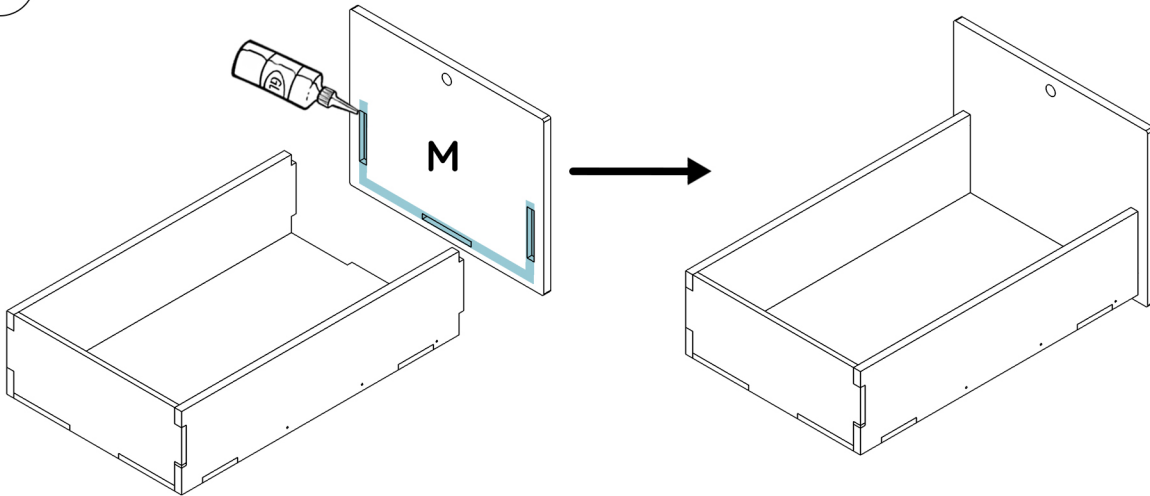


1.3 Apply glue to the notches and joints and assemble part **L** with the **I/J/K** assembly.



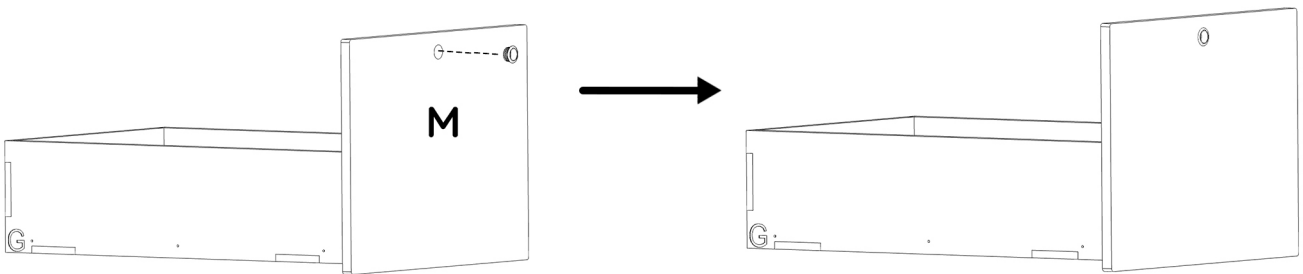
DRAWER & SLIDES ASSEMBLY

- 1.4** Apply glue to the notches and joints and assemble the **M** front with the rest of the drawer.

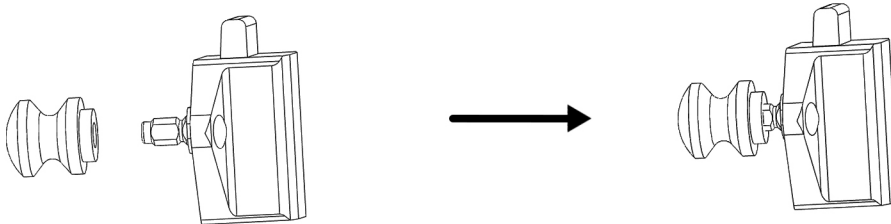


2 Push lock assembly

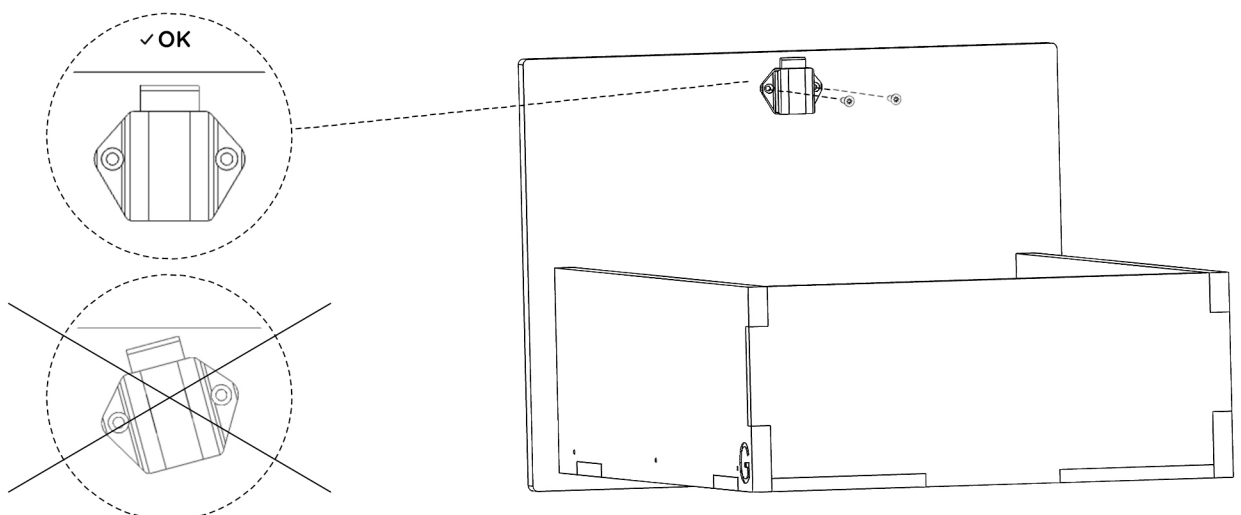
- 2.1** Forcefully insert the push lock rosette onto the visible side of the **M** front panel.



- 2.2** Screw the button onto the push lock.



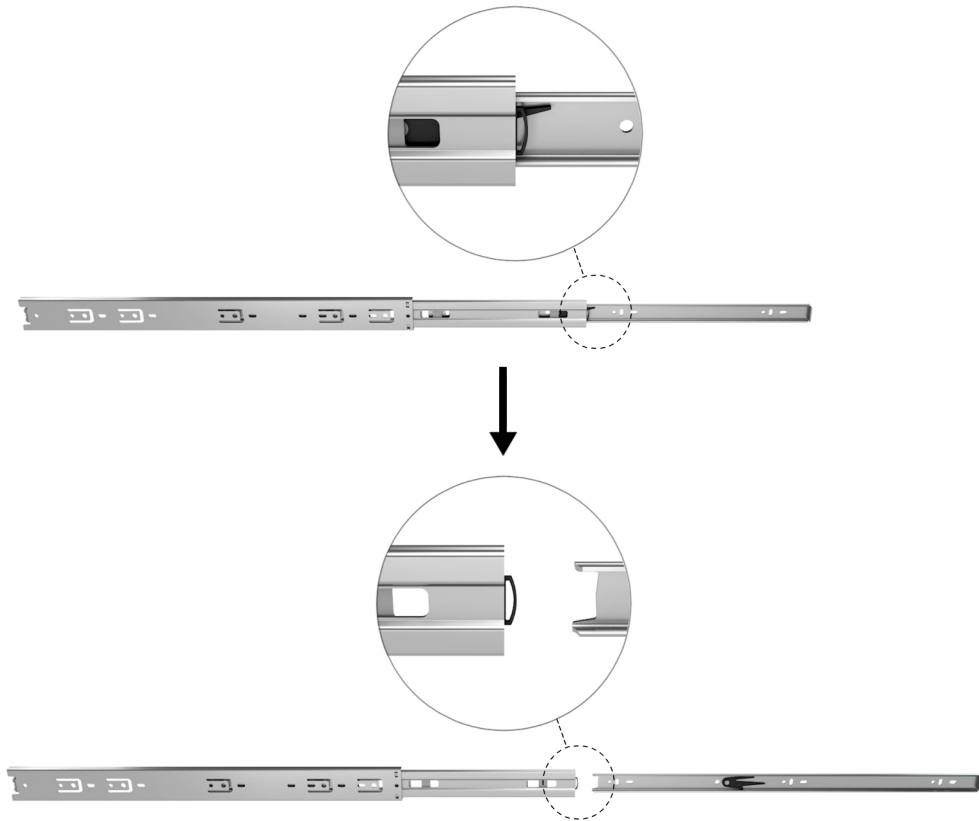
- 2.3** Screw the push lock with two 12 mm screws onto the front panel **M**.
Make sure that it is aligned with the top of the front panel.



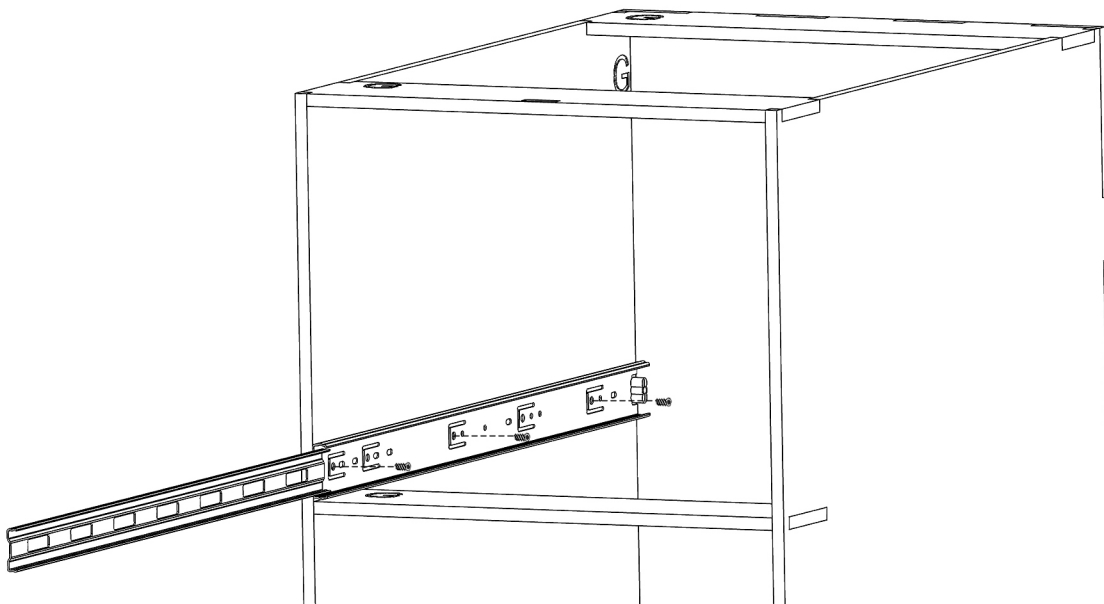
DRAWER & SLIDES ASSEMBLY

3 Slides assembly

- 3.1** Disassemble the slides into 2 parts by pulling them as far as possible and unlocking them using the black part.

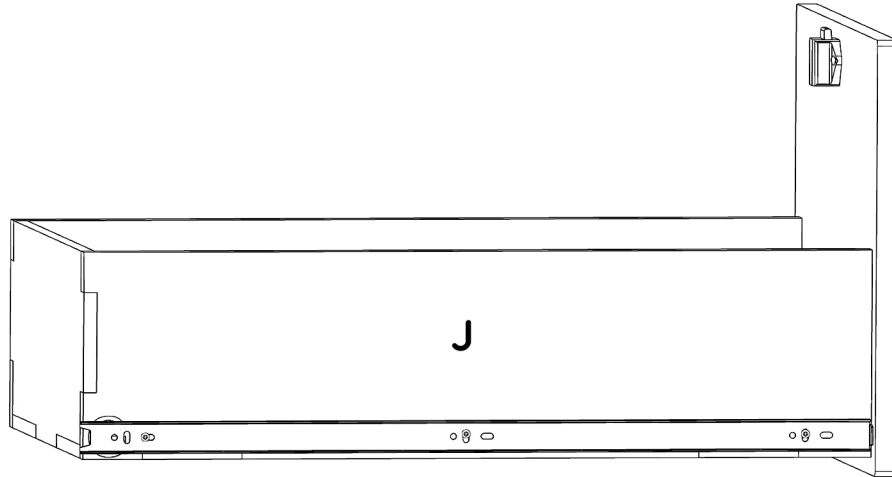


- 3.2** Screw the slides into the pilot holes in the cabinet using 7 mm screws (3 per slide).



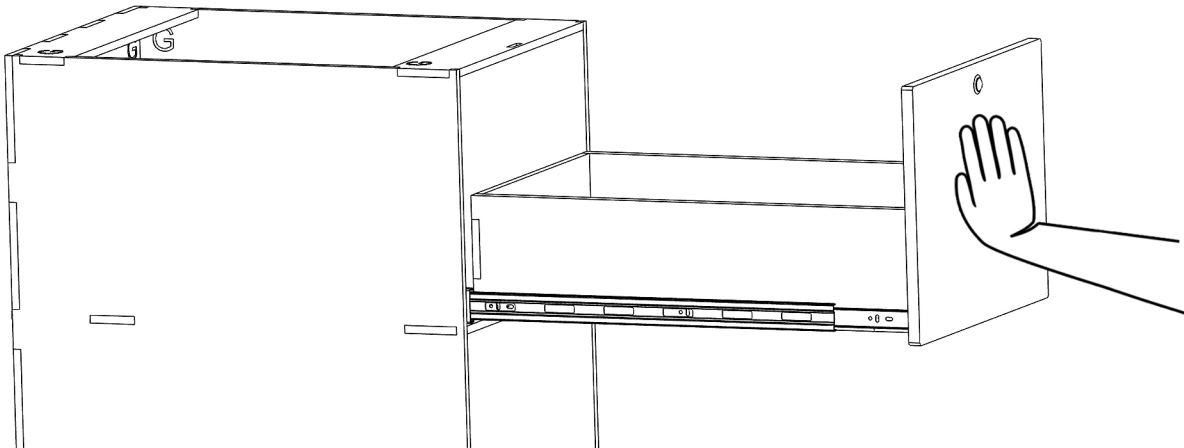
DRAWER & SLIDES ASSEMBLY

- 3.3** Screw the slides into the pilot holes in the drawer using the 15 mm screws (3 per slide) on parts **J** and **K**.

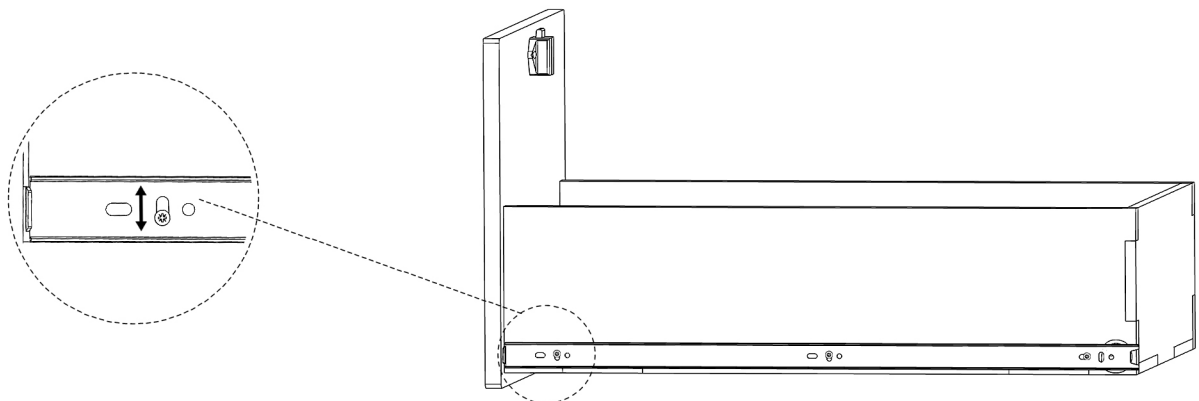


4 Installing and Adjusting the Drawer

- 4.1** Slide the drawer into the runners until you hear the locking “click”.



- 4.2** To adjust the drawer height, loosen the drawer slide mounting screws, move the drawer up or down, and retighten the 15 mm screws.



HAPPY ASSEMBLY!

If you have any comments regarding the assembly,
you can let us know by email:
sav@simplevans.eu

**ALL
TUTORIALS
HERE**



SHARE YOUR EPIC VAN BUILD JOURNEY WITH US AND THE COMMUNITY!

#SimpleVansLife

**Snap some pics or record a video of your awesome furniture
installed and ready for adventure.**

We'll feature the best content on our social media channels,
and the most inspiring builds will win incredible prizes!

