

# Assembly guide

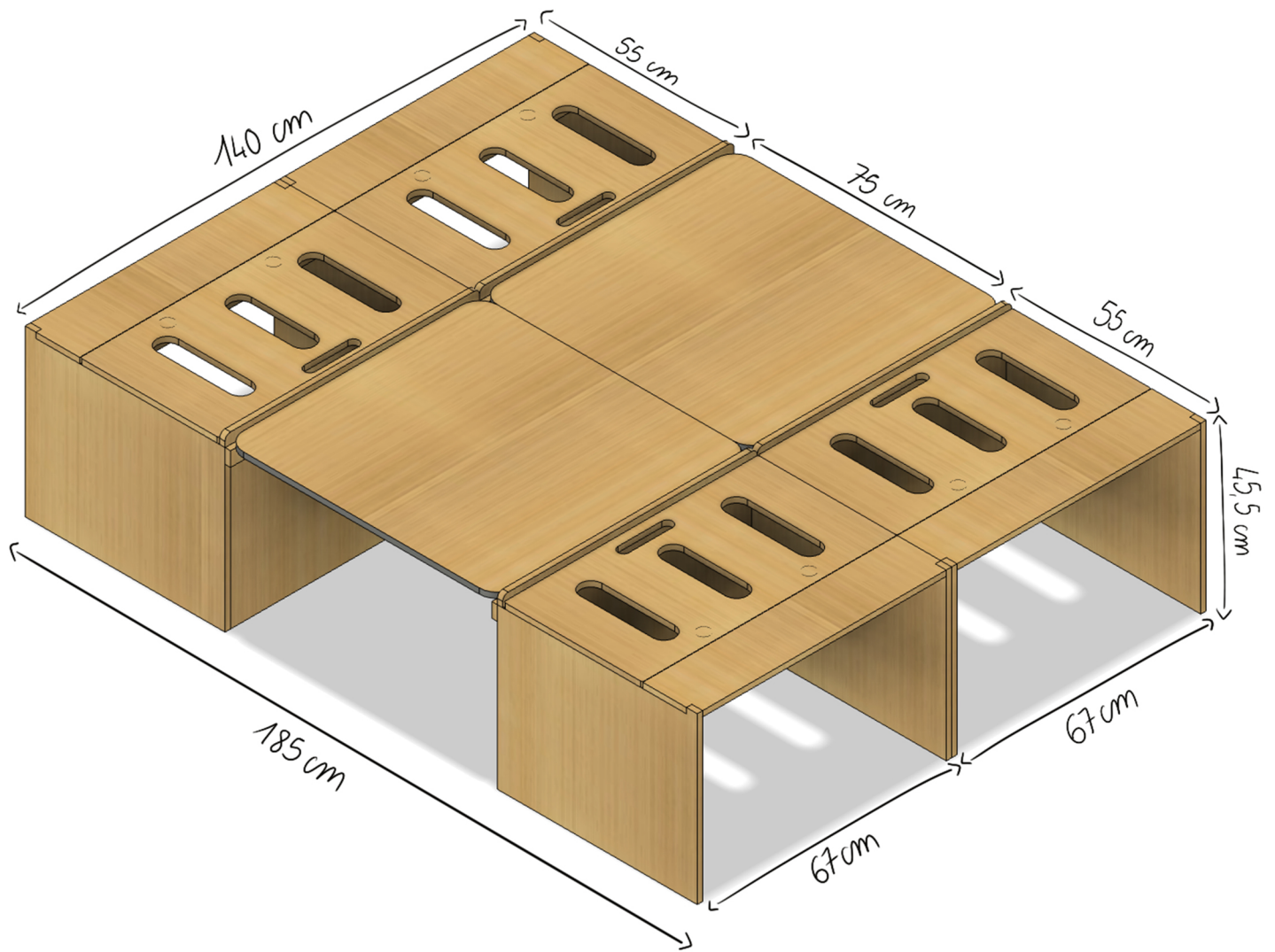
# BSL Queen Bed



**WELCOME ABOARD!**

Let's assemble Your dream furniture and get you on the road.

**LET'S GO !**



## SHOW OFF YOUR SKILLS & INSPIRE THE VANLIFE COMMUNITY!

Share your build on Facebook, Instagram ou TikTok.

Use #SimpleVansLife :

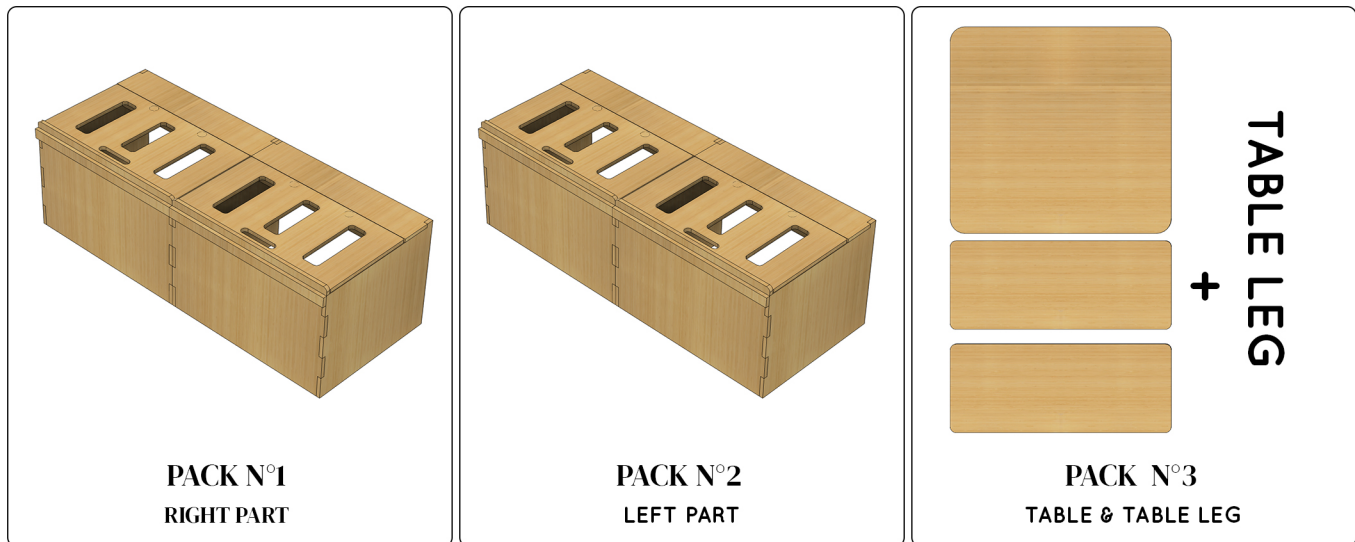
**Best content wins awesome prizes.**



# Materials required for assembly

- Masking tape
  - Square (optional)
  - PZ1 & PZ2 screwdriver
  - Wood glue (slow-drying recommended)
  - Damp cloth (or paper towel)
  - Tape measure or ruler (for hinge positioning)
  - Pencil (for marking hinges)
- 

## Your bed consists of 3 packages:



To assemble **packages N° 1 and N° 2**, to make it easier to hold the parts together during the various stages, **we recommend that you, if possible, get help from a second person and/or use tape.**




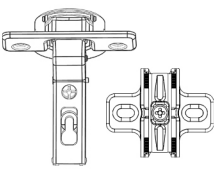


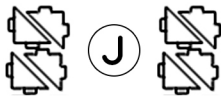
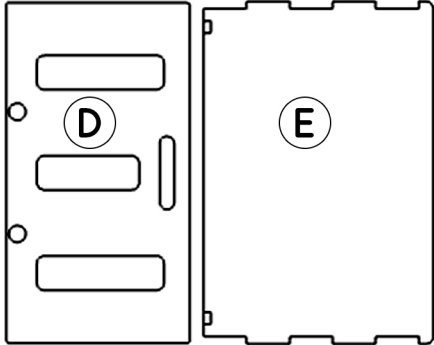
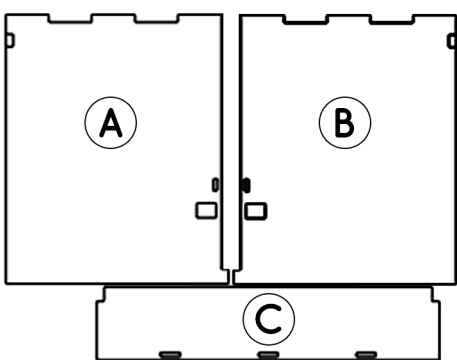
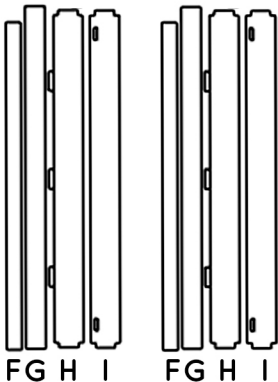
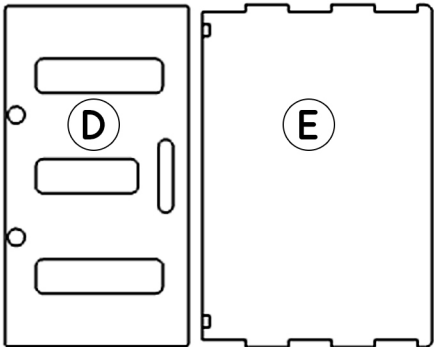
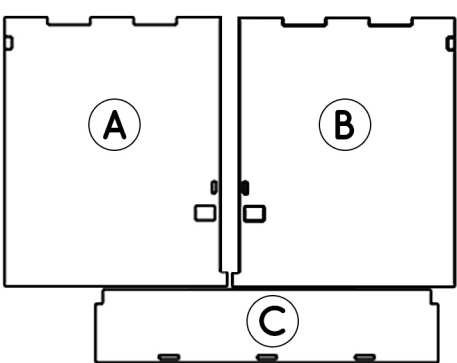
## Read before assembling the furniture

- Check for chips in the grooves
- Check that the parts are free of defects before gluing / or make a dry fitting
- Read the entire instructions carefully before final assembly with glue
- Wipe off excess glue with a damp cloth immediately after gluing each piece
- Make any cuts (if necessary) before gluing the furniture
- Protect the surrounding areas of the gluing areas with masking tape to reduce cleaning

If you have a problem with a part or accessory, please contact us by email: [sav@simplevans.eu](mailto:sav@simplevans.eu)

**PACKS N° 1 & 2 :** These packs have the same content

-   
Screw 15 mm X **42**
-   
Screw 25 mm X **8**
-   
Screw 30 mm X **4**
-   
Soft-close hinge & base  
X **4**





# ASSEMBLY 70 CM UNIT



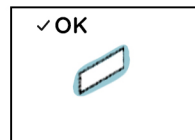
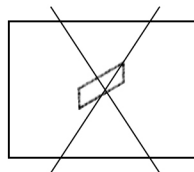
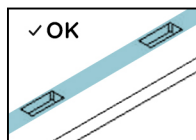
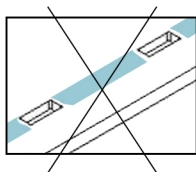
Estimated time: 45 min



Apply a sufficient amount of glue to the contact surfaces and grooves.

The glue should **slightly protrude from the grooves when assembled**.

**Wipe off excess glue** with a damp cloth after assembly.



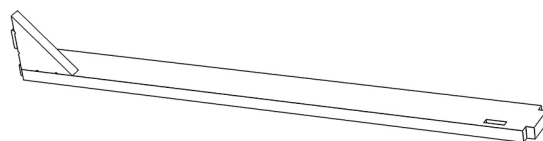
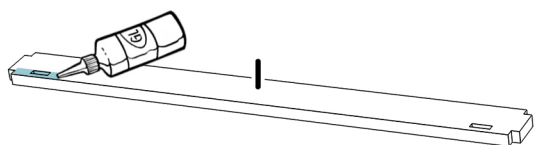
glue that comes out slightly after assembly

## ASSEMBLY 70 CM UNIT

The BSL QUEEN bed is made up of a set of **four identical 70 cm units**, each forming the right and left parts of your bed in pairs. The following steps describe the assembly of one of these pieces of furniture step by step; you must repeat these steps for the remaining three pieces of furniture.

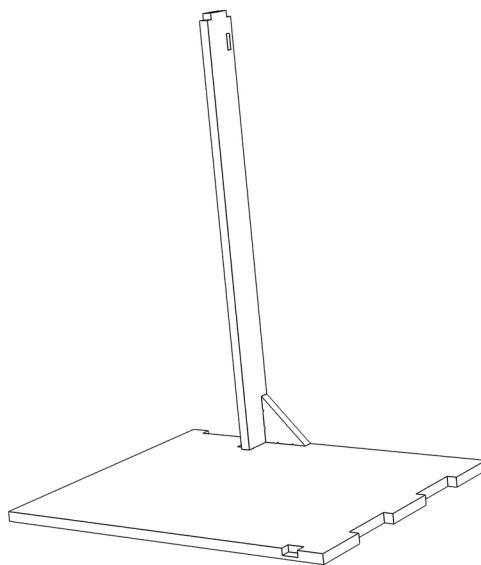
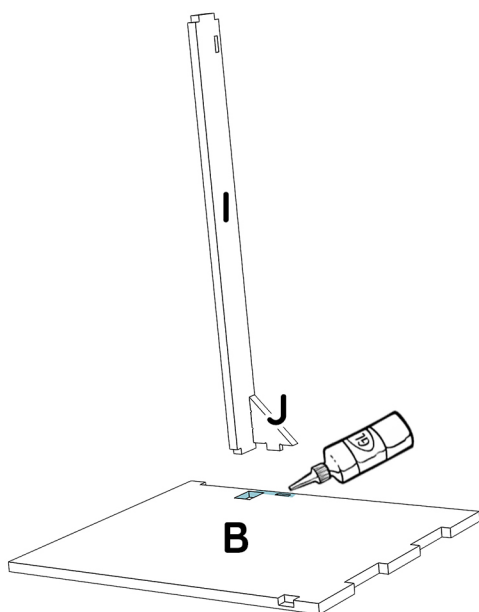
1

Apply glue to the notches and joints then assemble a **J** angle with part **I**.



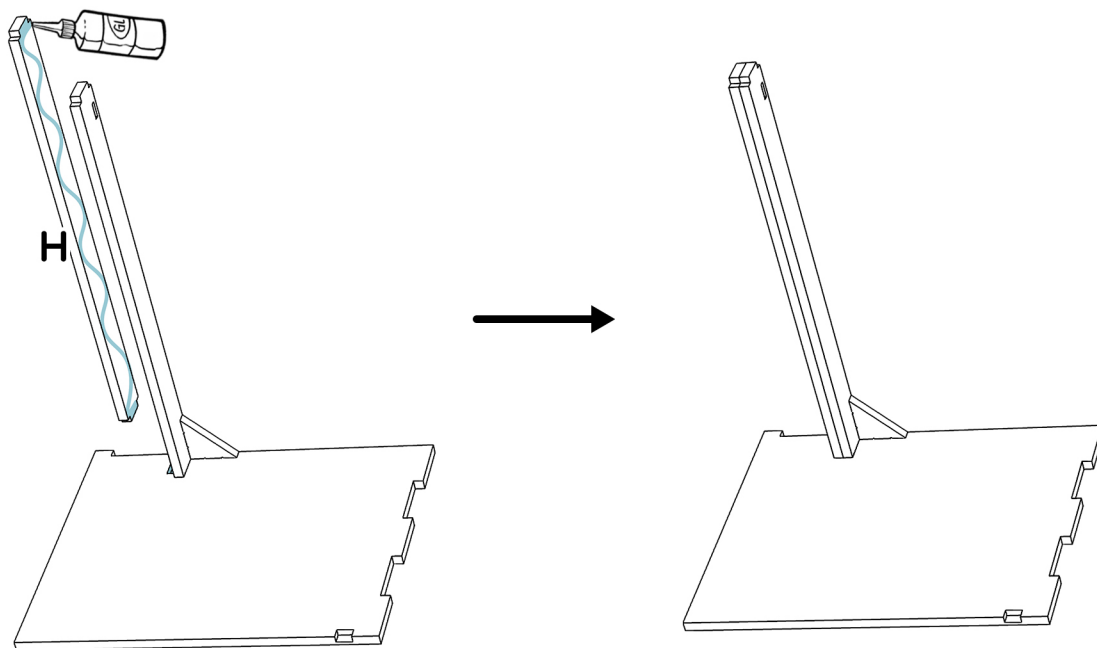
2

Apply glue to the notches and junctions then assemble part **B** with the **I/J** assembly.

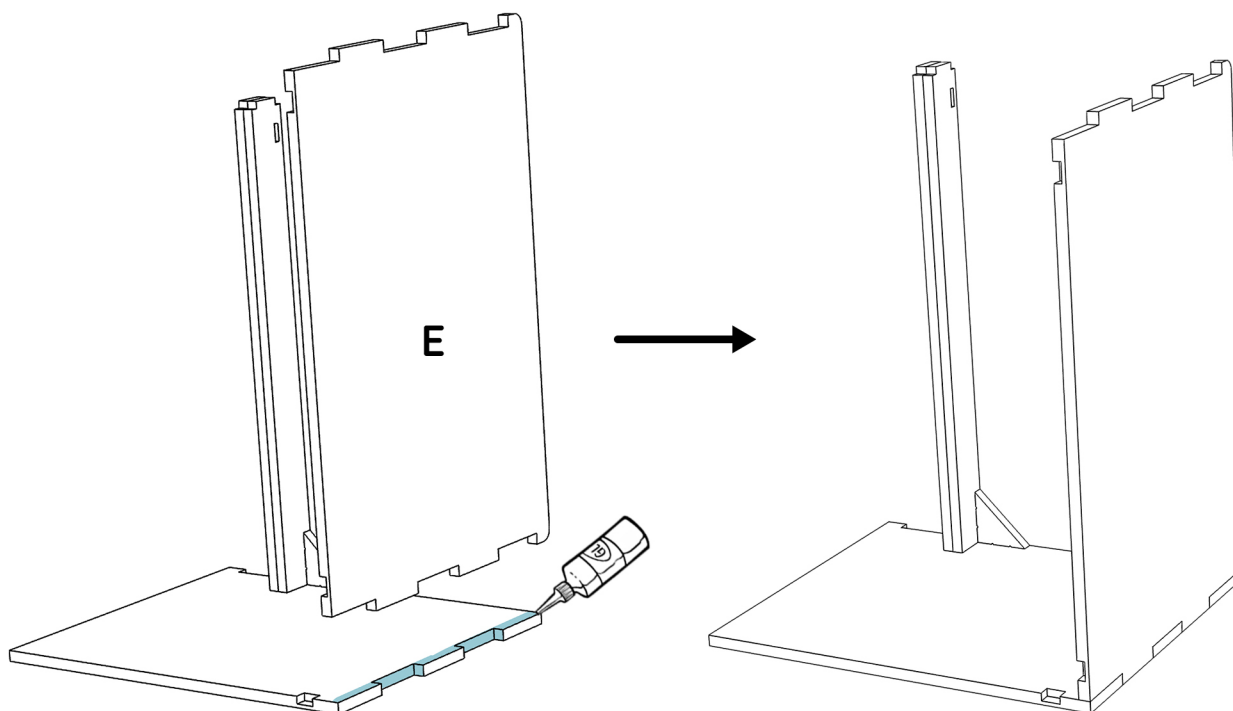


## FURNITURE ASSEMBLY

- 3 Apply glue to the notches and joints then assemble part **H** with the rest of the furniture.

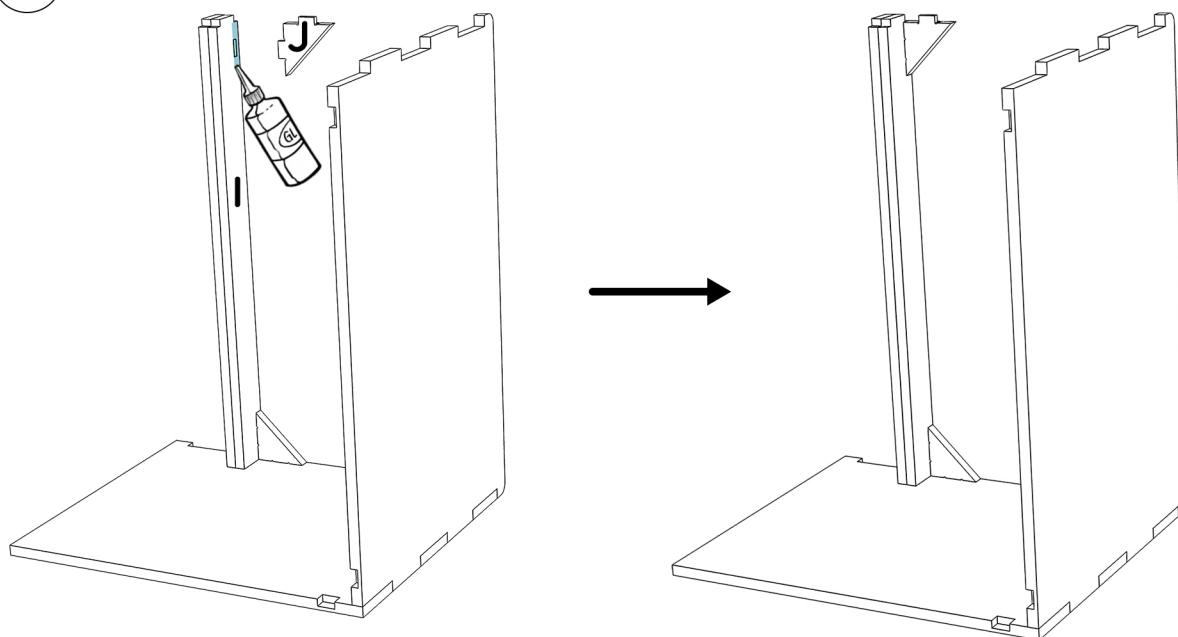


- 4 Apply glue to the notches and joints then assemble part **E** with the rest of the furniture.

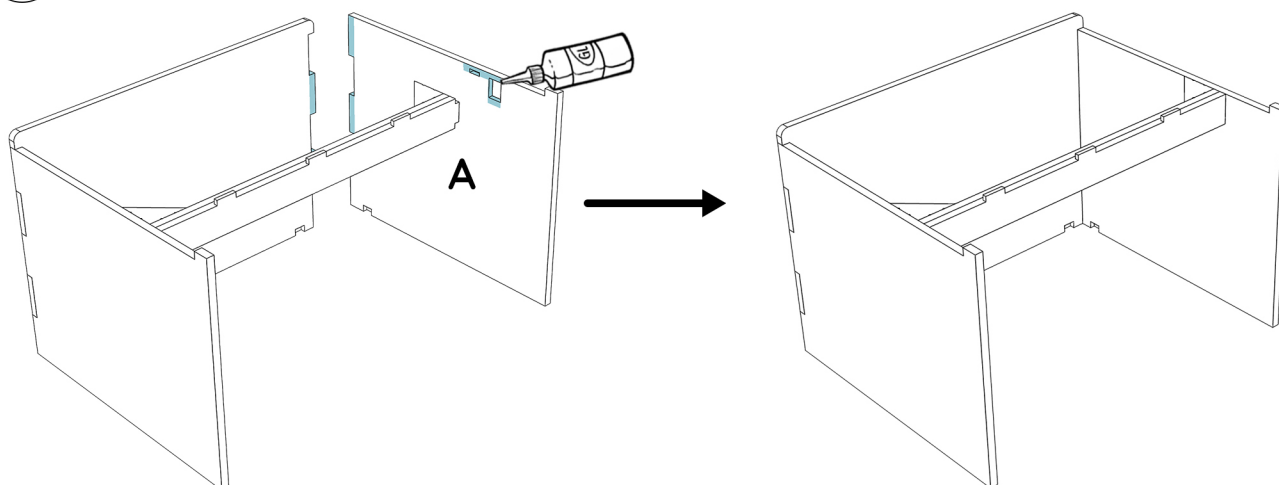


# FURNITURE ASSEMBLY

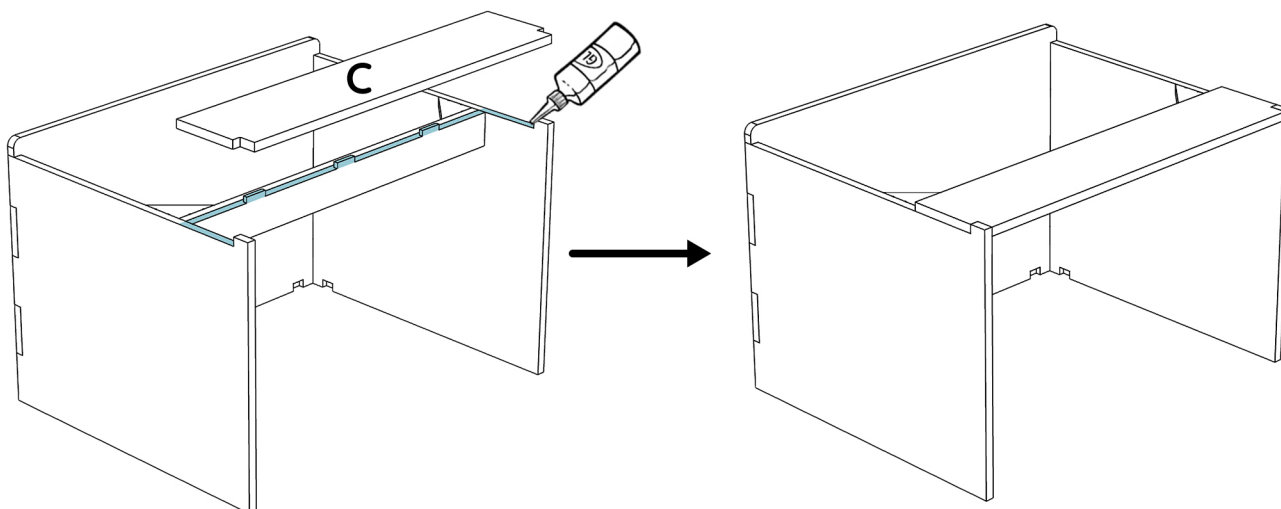
- 5** Apply glue to the notches and joints then assemble a **J** angle with part **I**.



- 6** Apply glue to the notches and joints then assemble part **A** with the rest of the furniture.

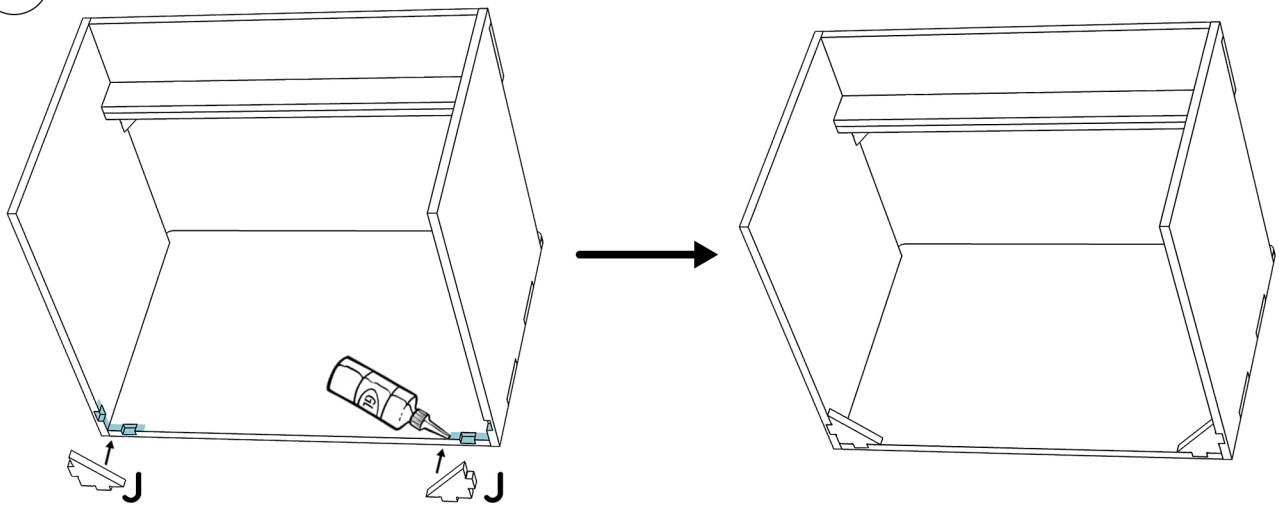


- 7** Apply glue to the notches and joints then assemble part **C** with the rest of the furniture.

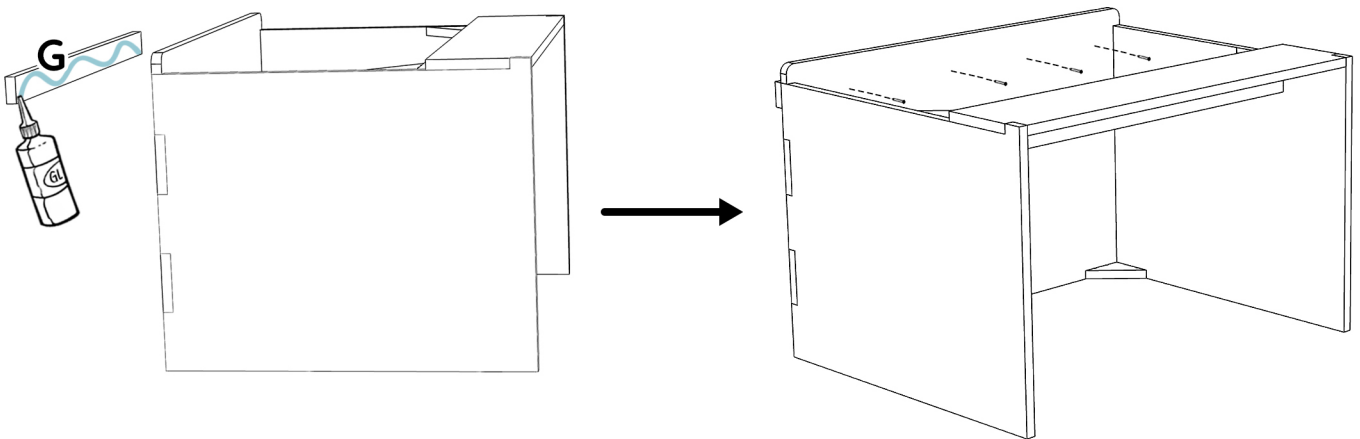


# FURNITURE ASSEMBLY

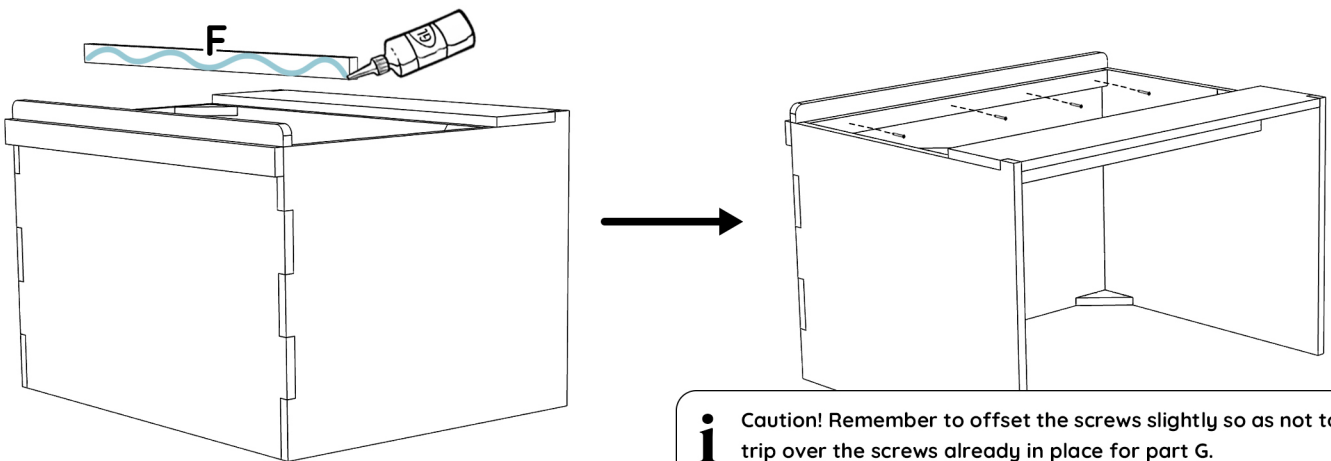
- 8** Apply glue to the notches and joints then assemble two **J** angles as below.



- 9** Apply glue to the joints, then assemble part **G** with the rest of the furniture, then screw it from the inside with four thin 25 mm screws. **Be careful to align this part well.**



- 10** Apply glue to the joints and then assemble part **F** with the rest of the furniture, then screw it from the inside of the furniture with four thin 25 mm screws. Be careful to align this part well.



**i** Caution! Remember to offset the screws slightly so as not to trip over the screws already in place for part G.

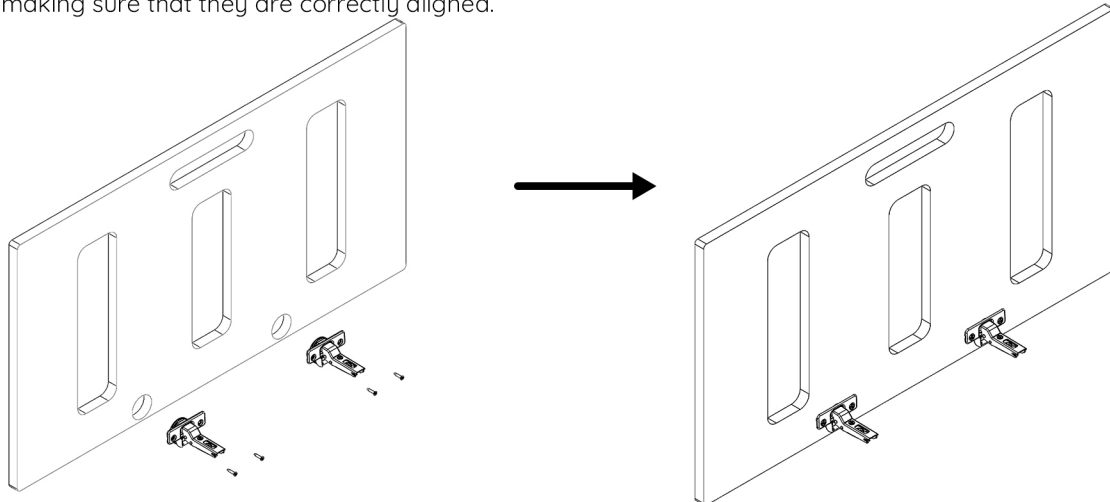


# TOP ASSEMBLY

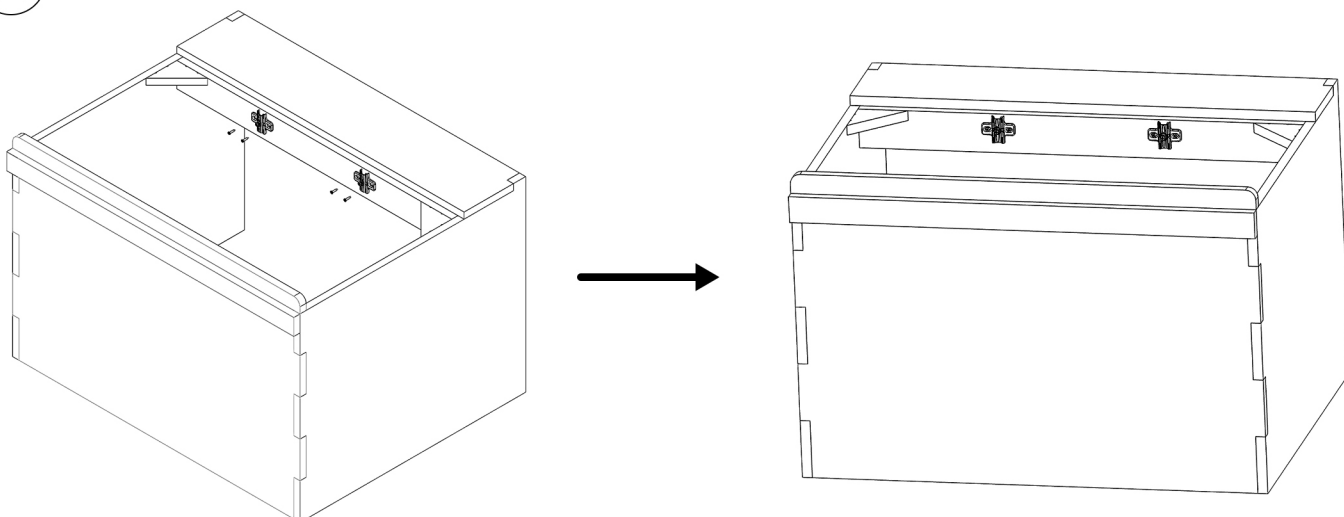


Estimated time: 30 min

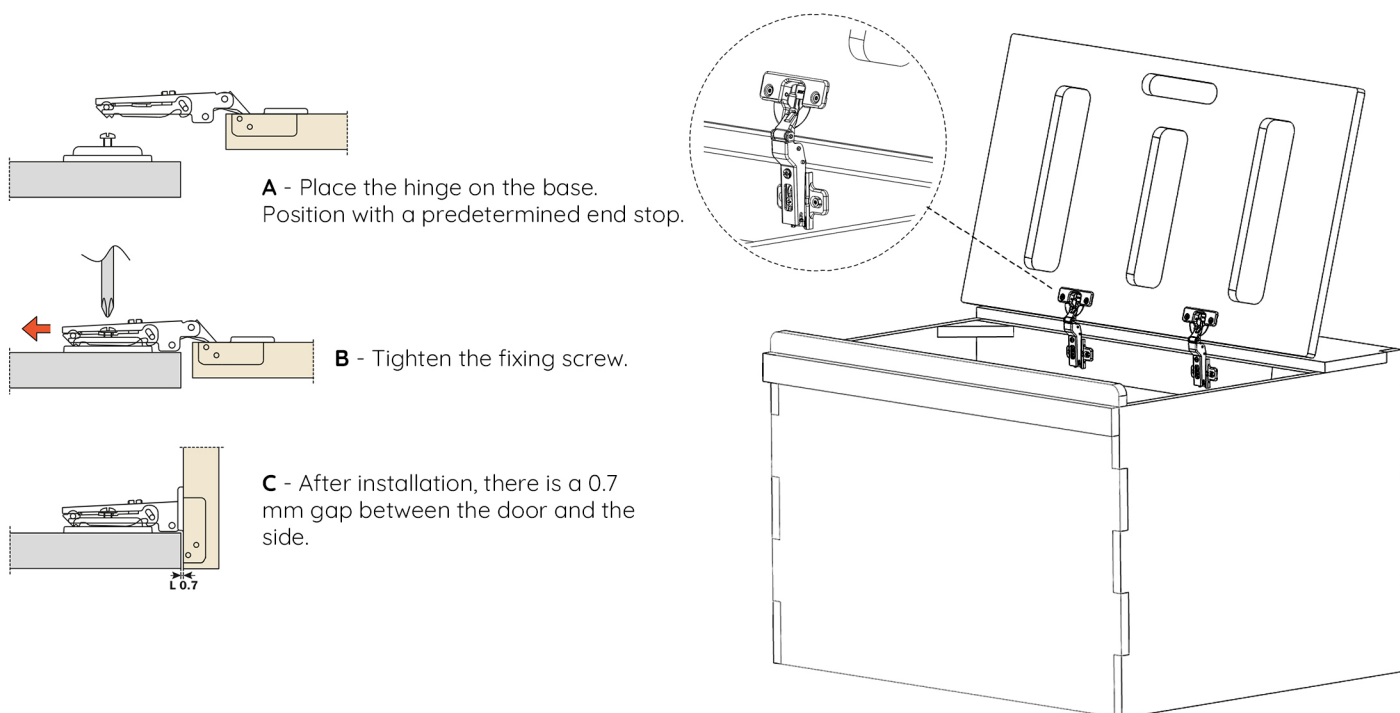
- 1 Place the soft close hinges in the locations provided on plate **D**, then screw them in with four 15 mm screws, making sure that they are correctly aligned.



- 2 Screw the crosshead bases into the pilot holes with four 15mm screws.



- 3 Assemble the top hinges onto the bases fixed to the furniture as shown below.



# HAPPY ASSEMBLY!

If you have any comments regarding the assembly,  
you can let us know by email:  
**sav@simplevans.eu**

**ALL  
TUTORIALS  
HERE**



## **SHARE YOUR EPIC VAN BUILD JOURNEY WITH US AND THE COMMUNITY!**

**#SimpleVansLife**

**Snap some pics or record a video of your awesome furniture  
installed and ready for adventure.**

We'll feature the best content on our social media channels,  
and the most inspiring builds will win incredible prizes!

