

Assembly guide

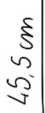
BSL KING Bed



WELCOME ABOARD!

Let's assemble Your dream furniture and get you on the road.

LET'S GO !



SHOW OFF YOUR SKILLS & INSPIRE THE VANLIFE COMMUNITY!

Share your build on Facebook, Instagram ou TikTok.

Use #SimpleVansLife :

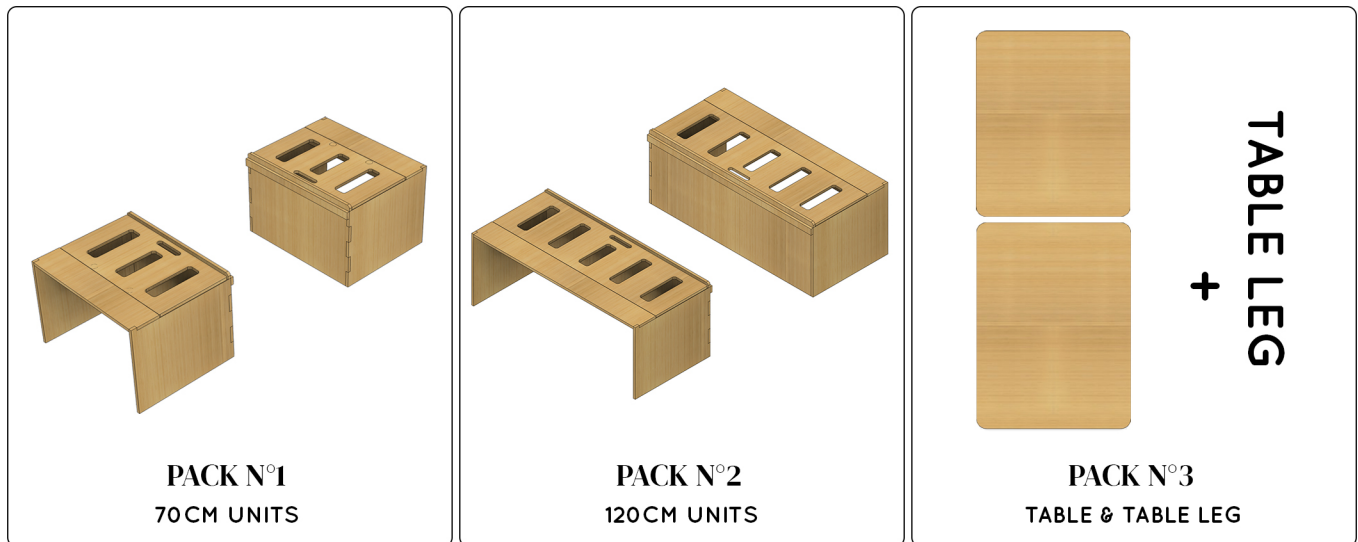
Best content wins awesome prizes.



Materials required for assembly

- Masking tape
 - Square (optional)
 - PZ1 & PZ2 screwdriver
 - Wood glue (slow-drying recommended)
 - Damp cloth (or paper towel)
 - Tape measure or ruler (for hinge positioning)
 - Pencil (for marking hinges)
-

Your bed consists of 3 packages:



To assemble **packages N° 1 and N° 2**, to make it easier to hold the parts together during the various stages, **we recommend that you, if possible, get help from a second person and/or use tape.**



Read before assembling the furniture

- Check for chips in the grooves
- Check that the parts are free of defects before gluing / or make a dry fitting
- Read the entire instructions carefully before final assembly with glue
- Wipe off excess glue with a damp cloth immediately after gluing each piece
- Make any cuts (if necessary) before gluing the furniture
- Protect the surrounding areas of the gluing areas with masking tape to reduce cleaning

If you have a problem with a part or accessory, please contact us by email: sav@simplevans.eu

PACK N° 1 : two 70 cm units



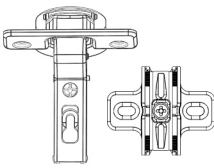
Screw 15 mm X **42**



Screw 25 mm X **8**

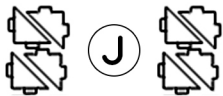
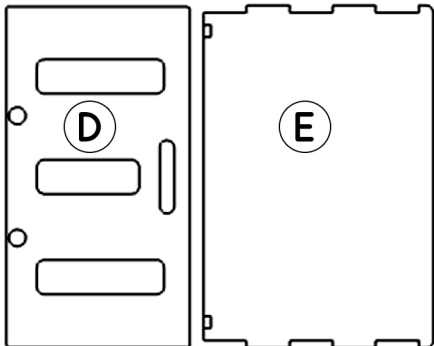
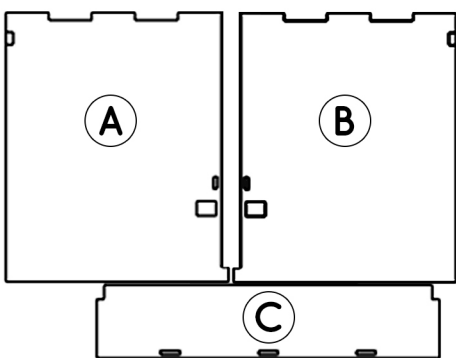
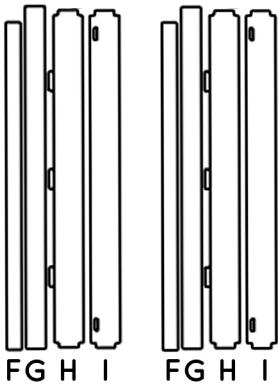
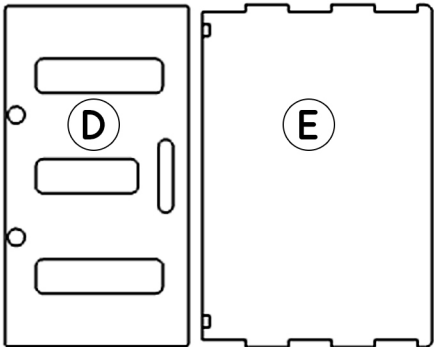
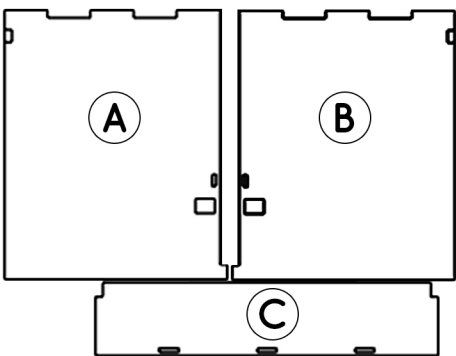


Screw 30 mm X **4**



Soft-close hinge & base

X **4**



PACK N° 2 : two 120 cm units



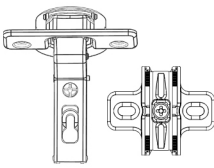
Screw 15 mm X 42



Screw 25 mm X 8

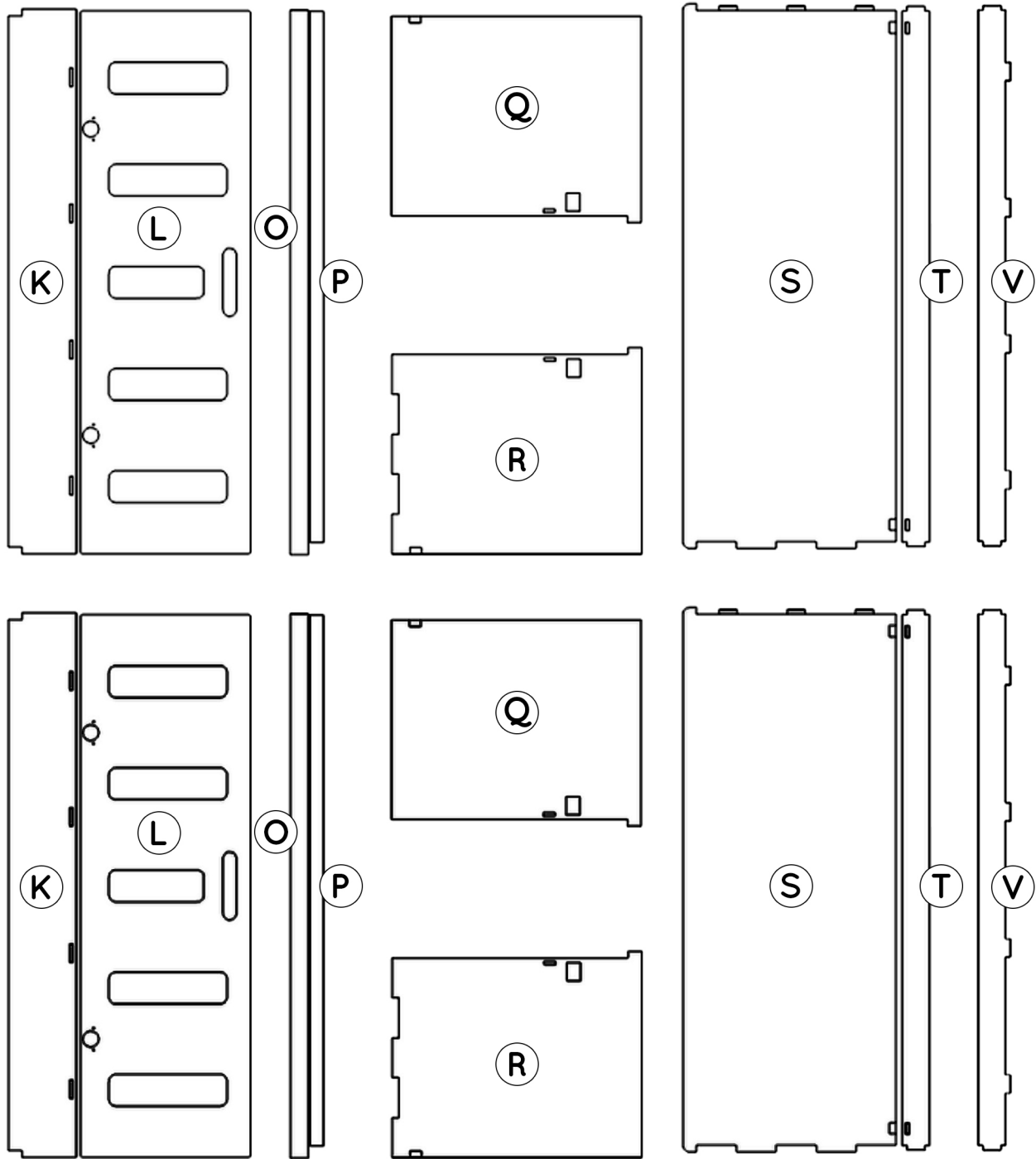


Screw 30 mm X 4



Soft-close hinge & base

X 4



U



ASSEMBLY 70 CM UNIT



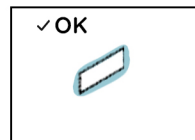
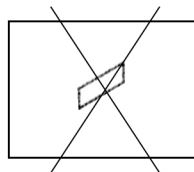
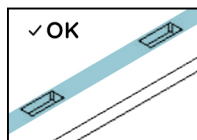
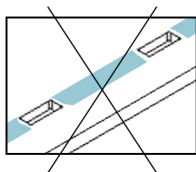
Estimated time: 45 min



Apply a sufficient amount of glue to the contact surfaces and grooves.

The glue should **slightly protrude from the grooves when assembled**.

Wipe off excess glue with a damp cloth after assembly.



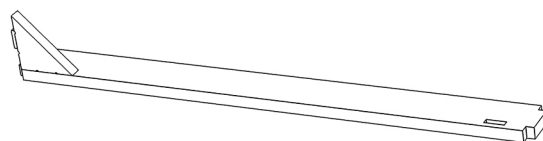
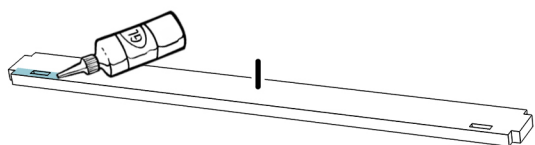
glue that comes out slightly after assembly

ASSEMBLY 70 CM UNIT

The **BSL KING** bed consists of a set of 4 units (2 units of 70 cm furniture + 2 units of 120 cm furniture). Each side of the bed consists of a 70 cm unit and a 120 cm unit. The following steps describe the step-by-step assembly of a 70 cm unit; you must repeat these steps for the second piece of furniture.

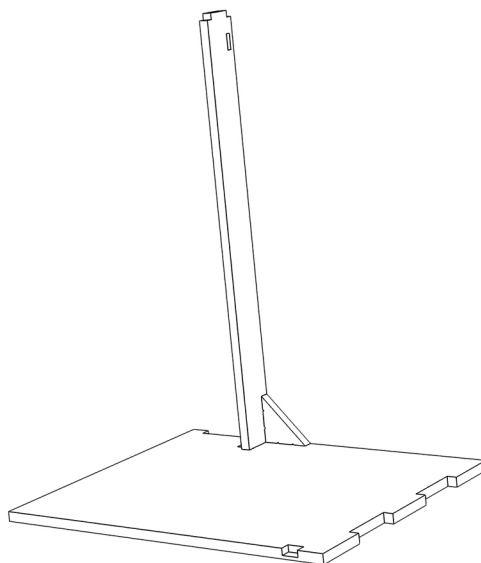
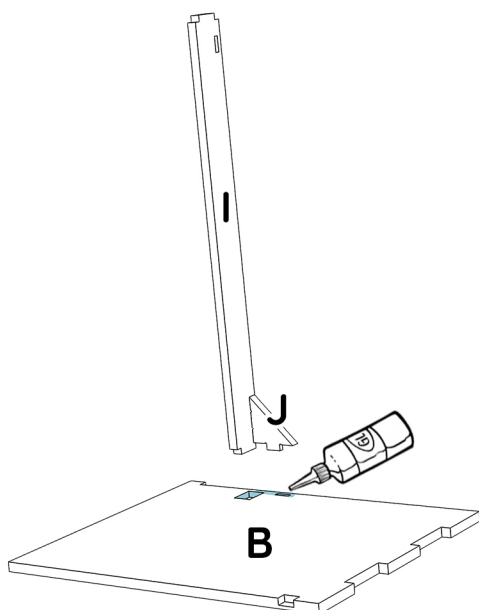
1

Apply glue to the notches and joints then assemble a **J** angle with part **I**.



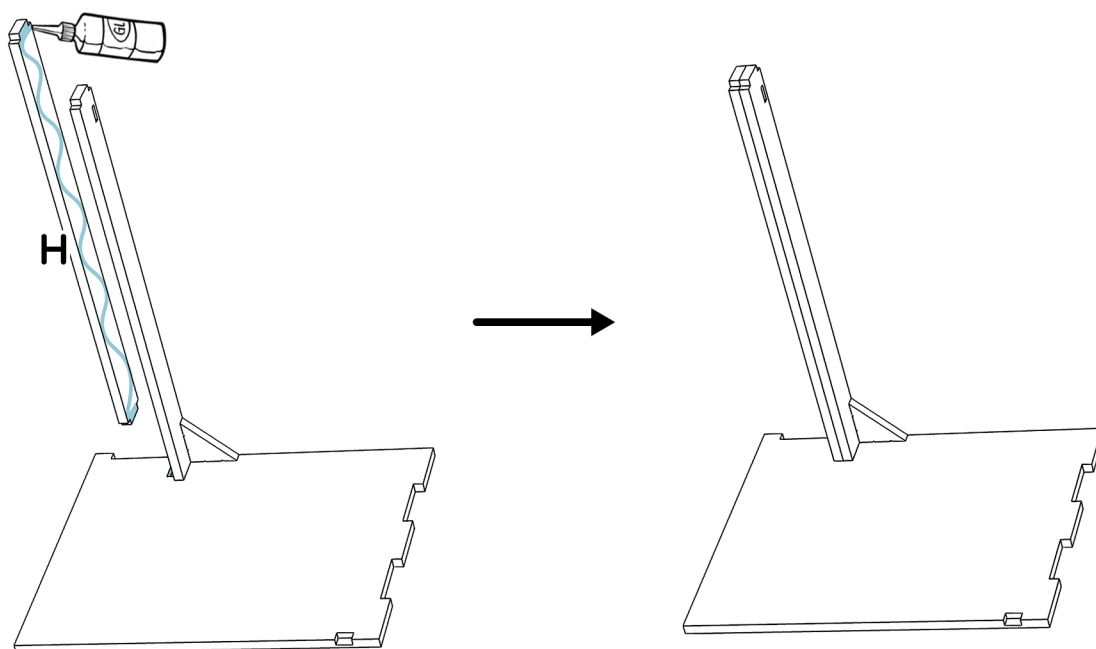
2

Apply glue to the notches and junctions then assemble part **B** with the **I/J** assembly.

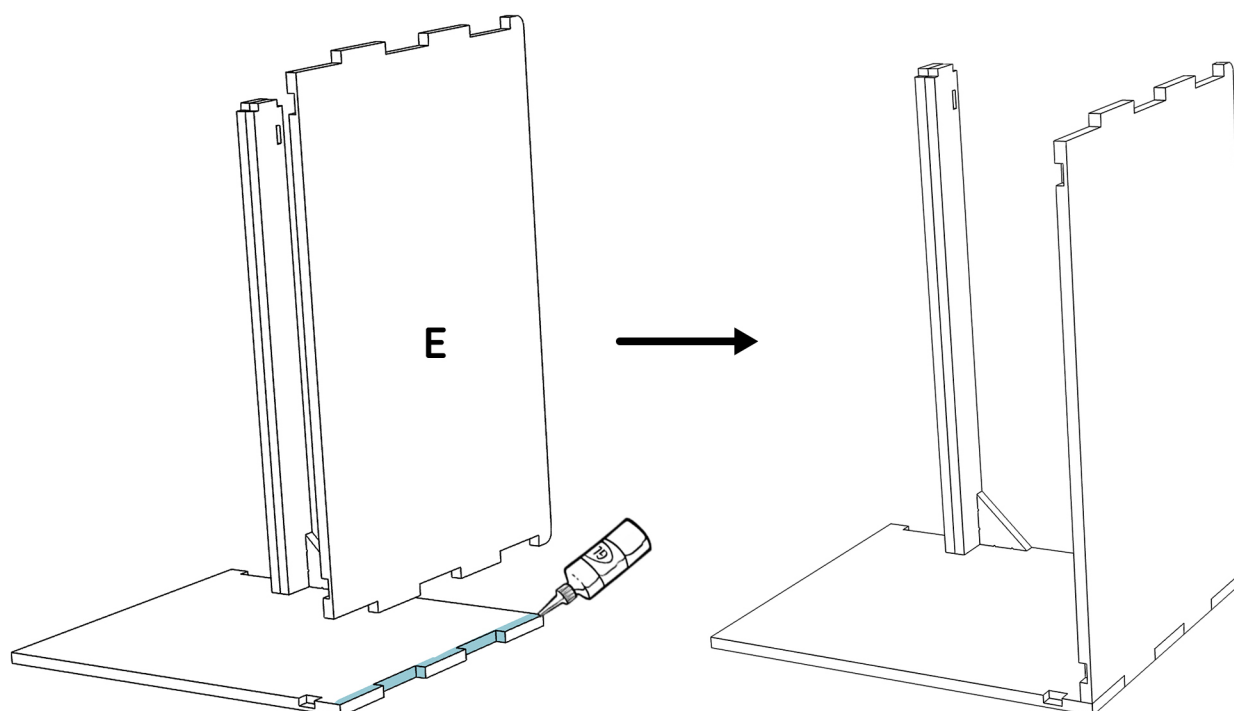


ASSEMBLY 70 CM UNIT

- 3 Apply glue to the notches and joints then assemble part **H** with the rest of the furniture.

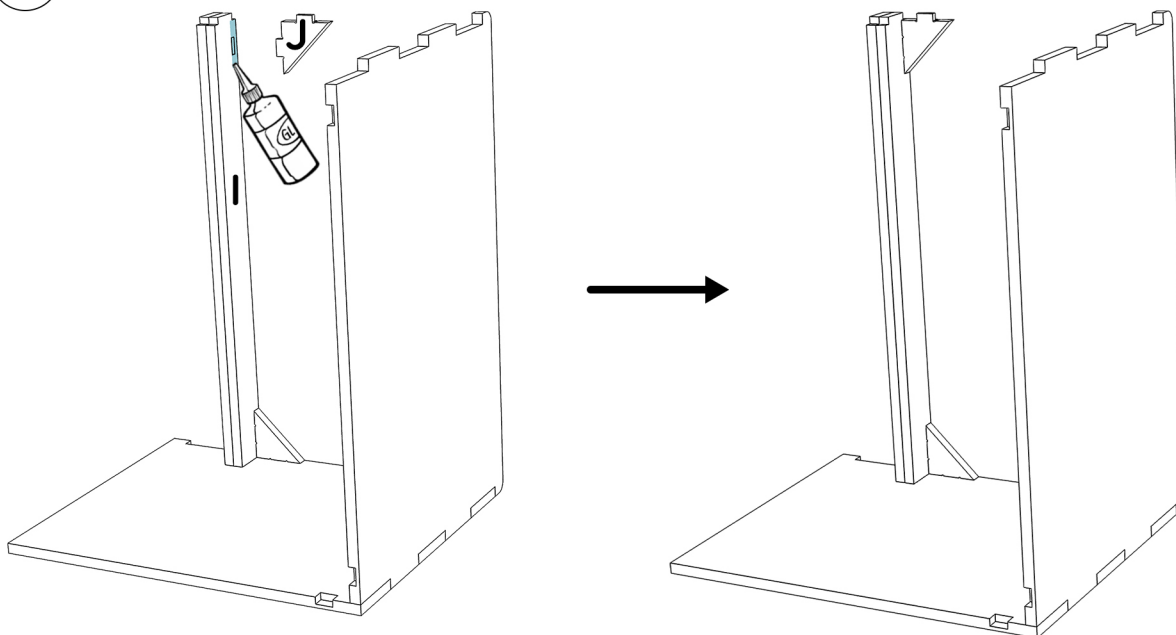


- 4 Apply glue to the notches and joints then assemble part **E** with the rest of the furniture.

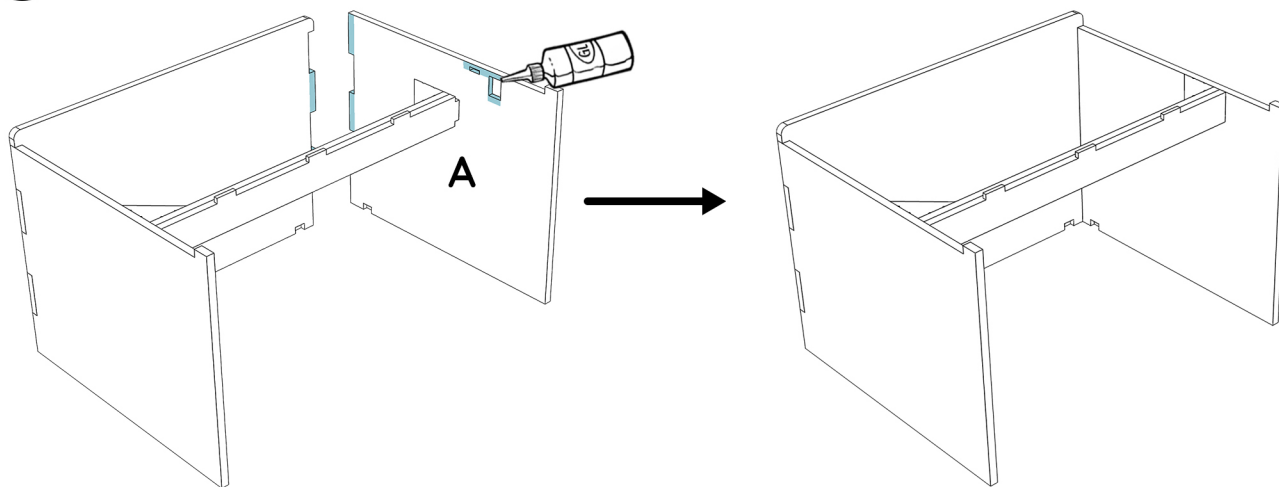


ASSEMBLY 70 CM UNIT

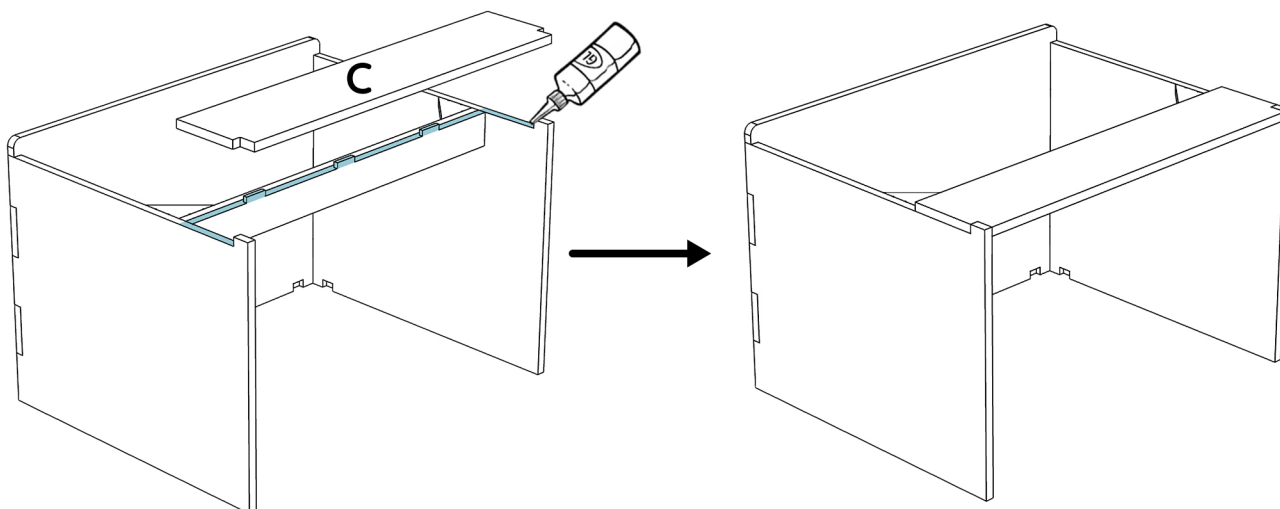
- 5** Apply glue to the notches and joints then assemble a **J** angle with part **I**.



- 6** Apply glue to the notches and joints then assemble part **A** with the rest of the furniture.

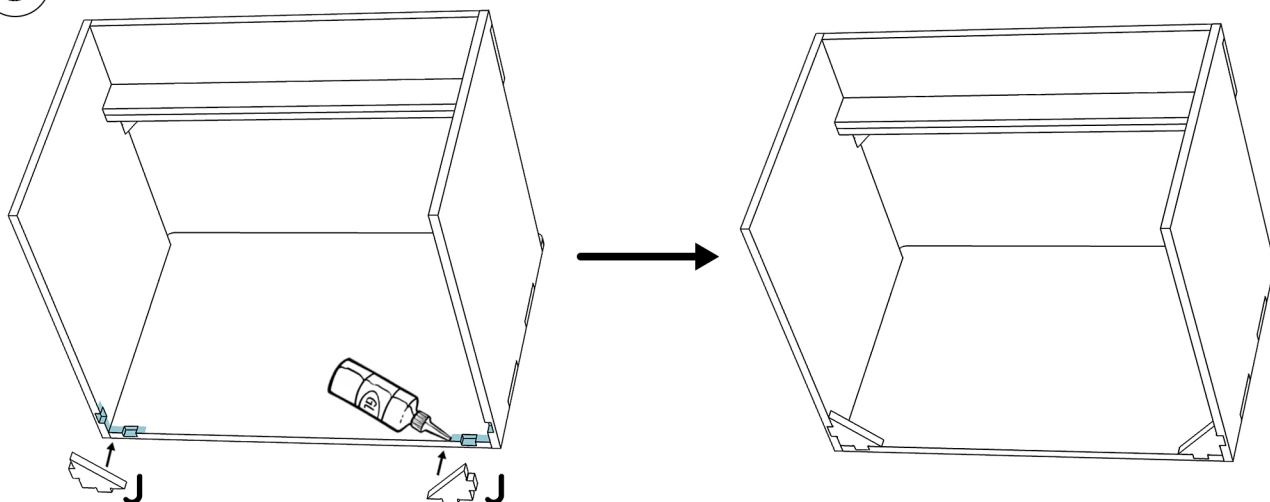


- 7** Apply glue to the notches and joints then assemble part **C** with the rest of the furniture.

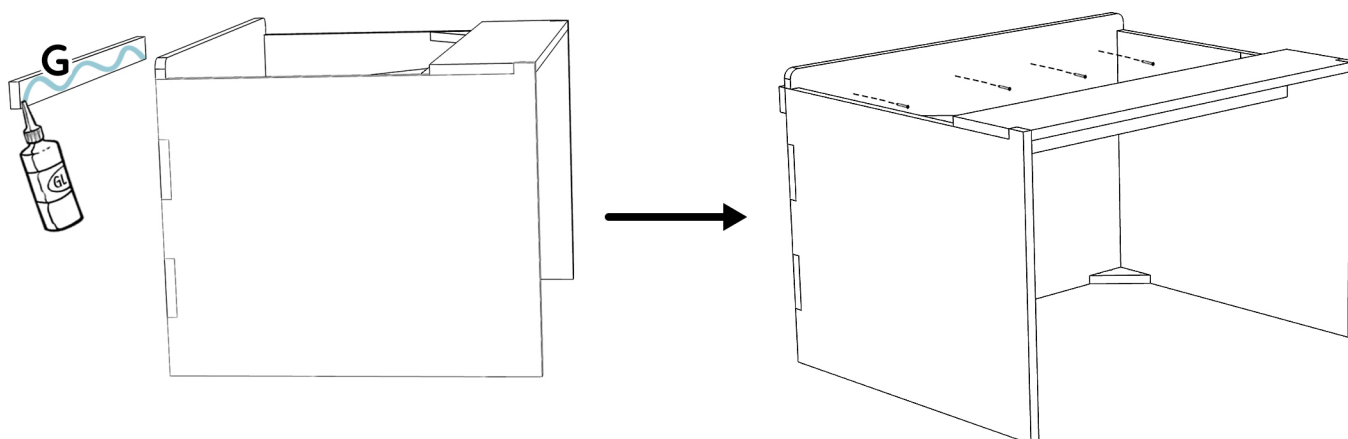


ASSEMBLY 70 CM UNIT

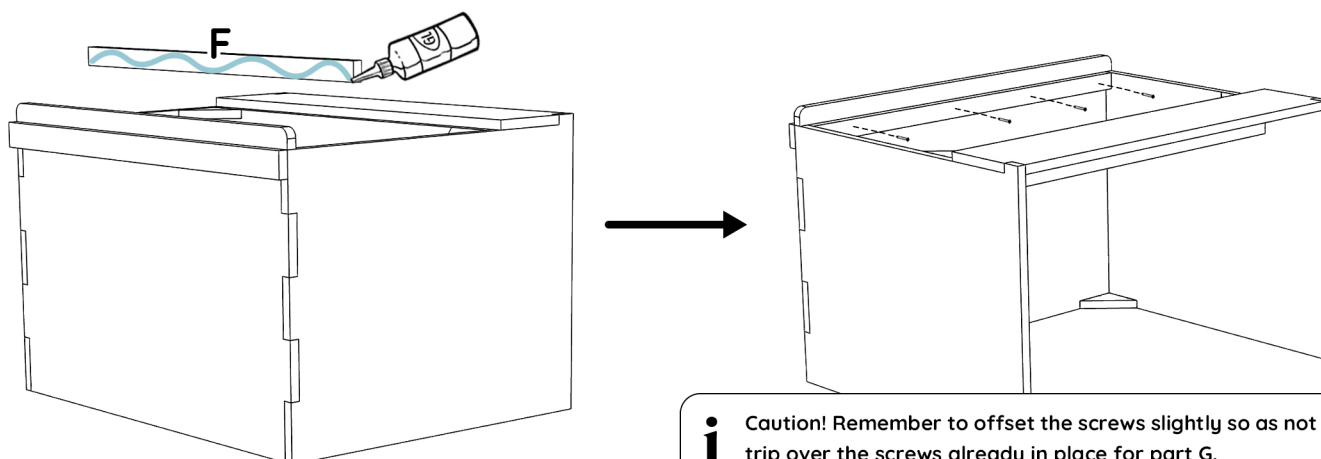
- 8** Apply glue to the notches and joints then assemble two **J** angles as below.



- 9** Apply glue to the joints, then assemble part **G** with the rest of the furniture, then screw it from the inside with four thin 25 mm screws. **Be careful to align this part well.**



- 10** Apply glue to the joints and then assemble part **F** with the rest of the furniture, then screw it from the inside of the furniture with four thin 25 mm screws. **Be careful to align this part well.**



i Caution! Remember to offset the screws slightly so as not to trip over the screws already in place for part G.

ASSEMBLY 120 CM UNIT

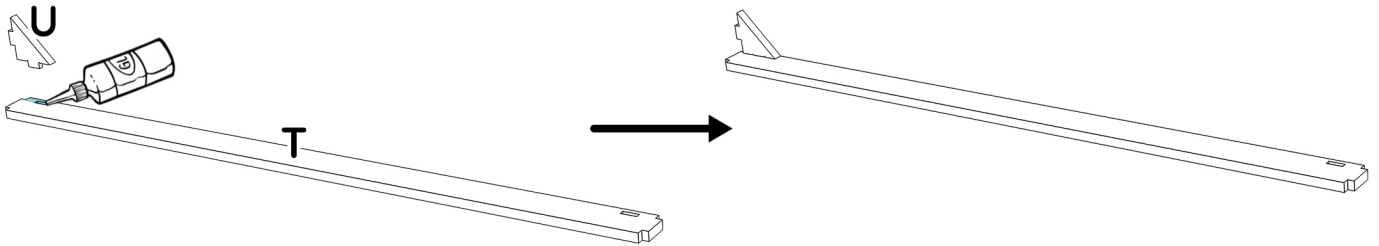


Estimated time: **45 min**

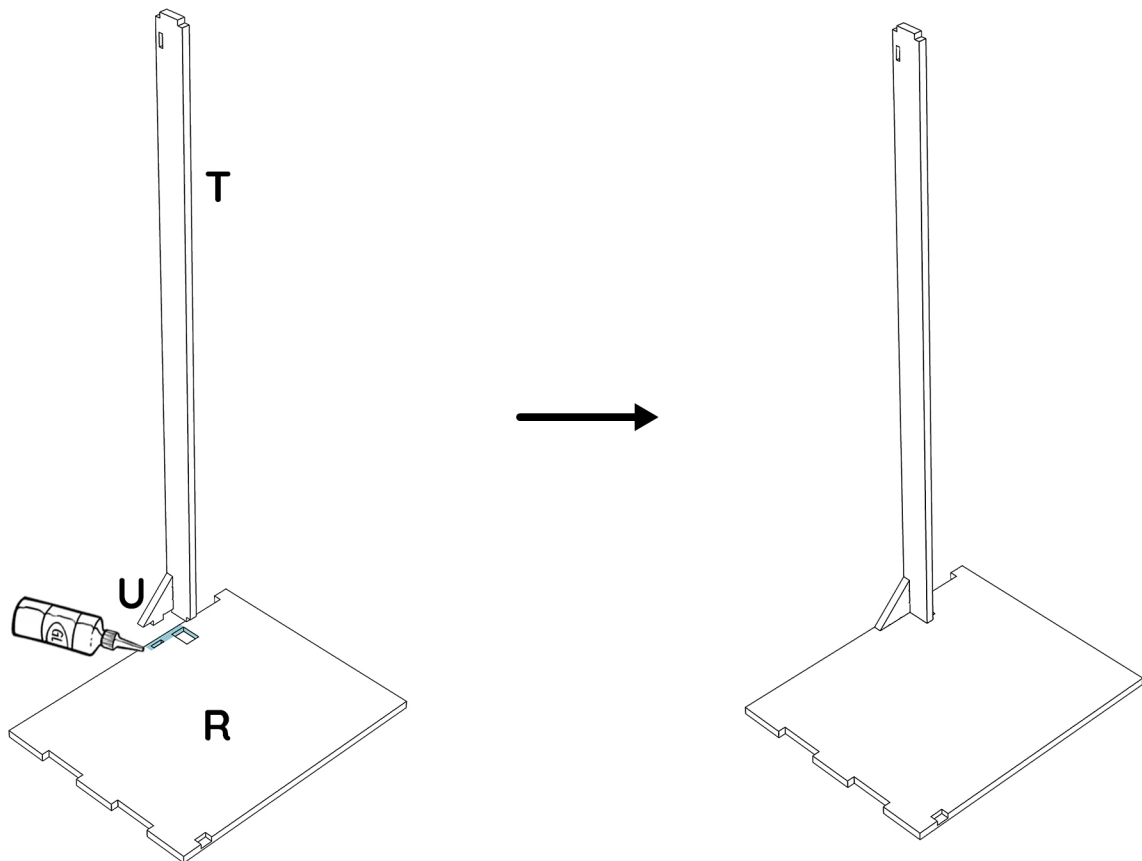
ASSEMBLY 120 CM UNIT

The BSL KING bed consists of a set of **4 units (2 units of 70 cm + 2 units of 120 cm)**. Each side of the bed consists of a 70 cm unit and a 120 cm unit. The following steps describe the step-by-step assembly of a 120 cm unit; you must repeat these steps for the second piece of furniture.

- 1** Apply glue to the notches and joints then assemble a **U** angle with the **T** piece.

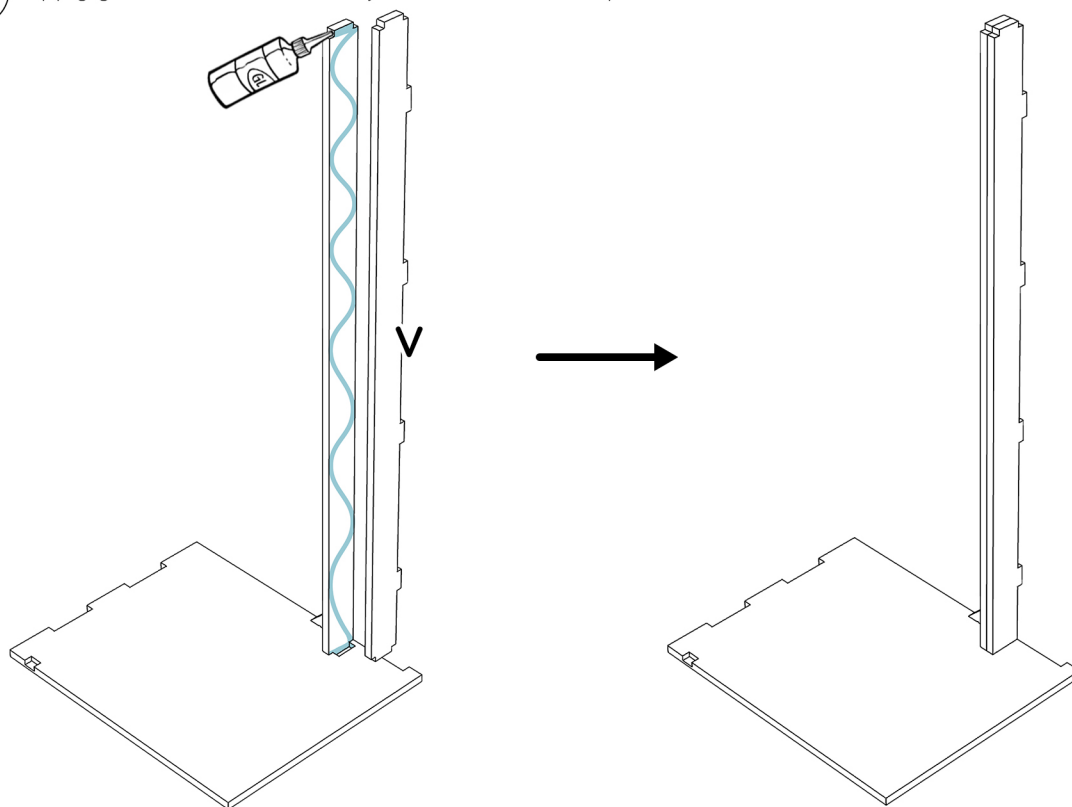


- 2** Apply glue to the notches and joints then assemble the **R** part with the **U/T** assembly.

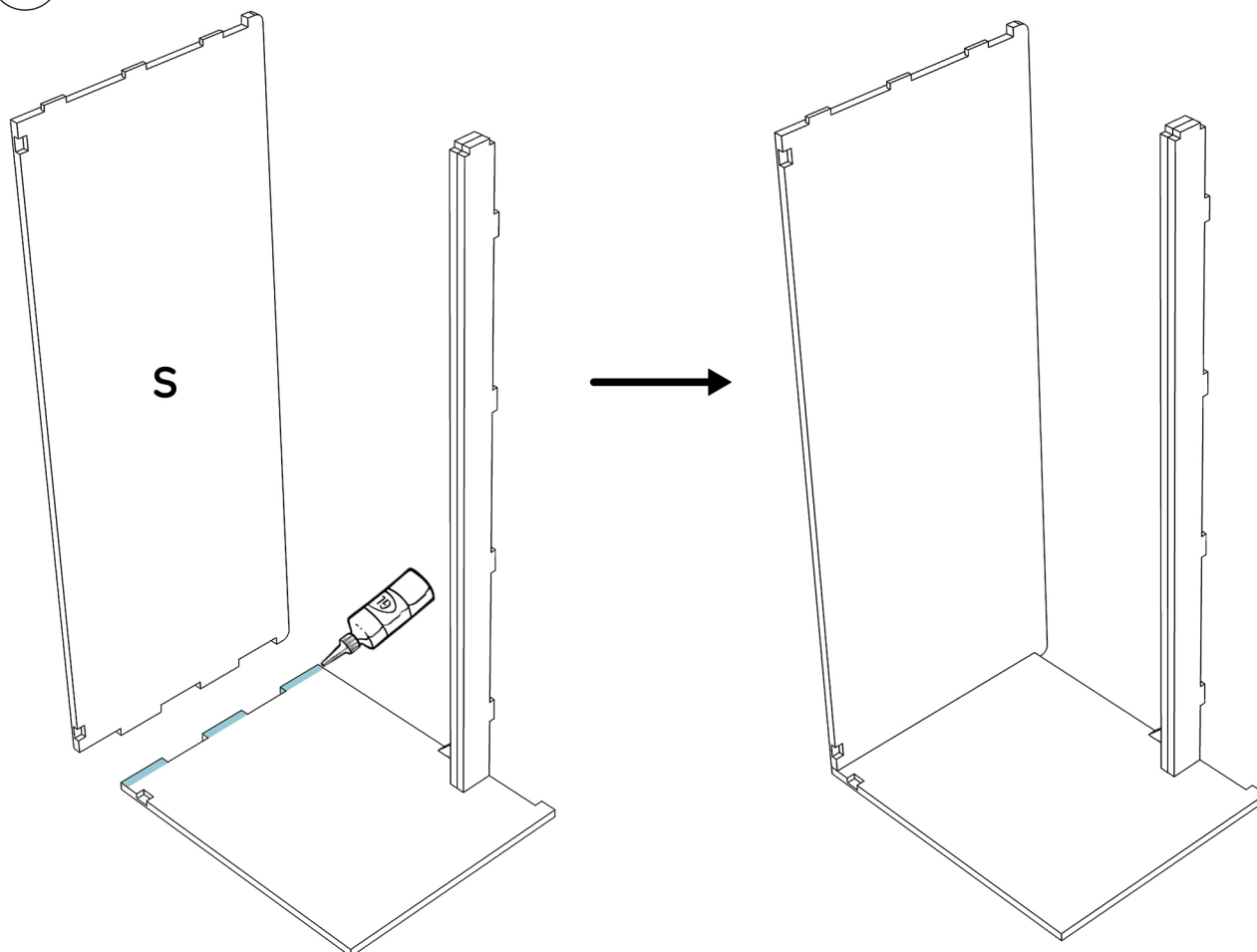


ASSEMBLY 120 CM UNIT

- 3** Apply glue to the notches and joints then assemble part **V** with the rest of the furniture.

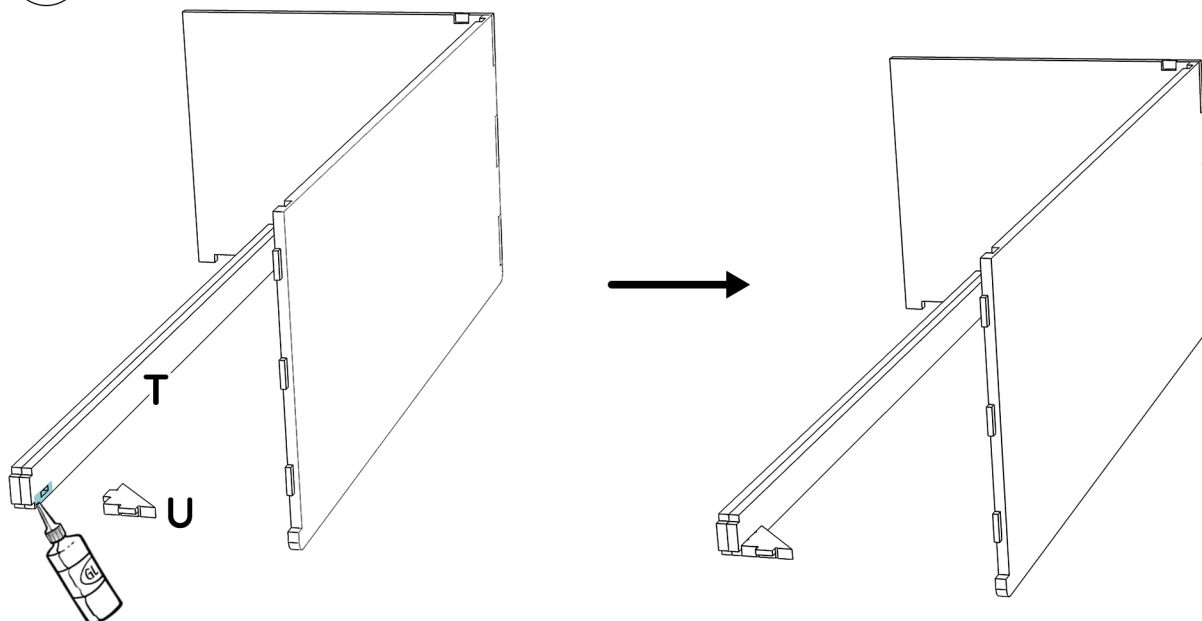


- 4** Apply glue to the notches and joints then assemble part **S** with the rest of the furniture.

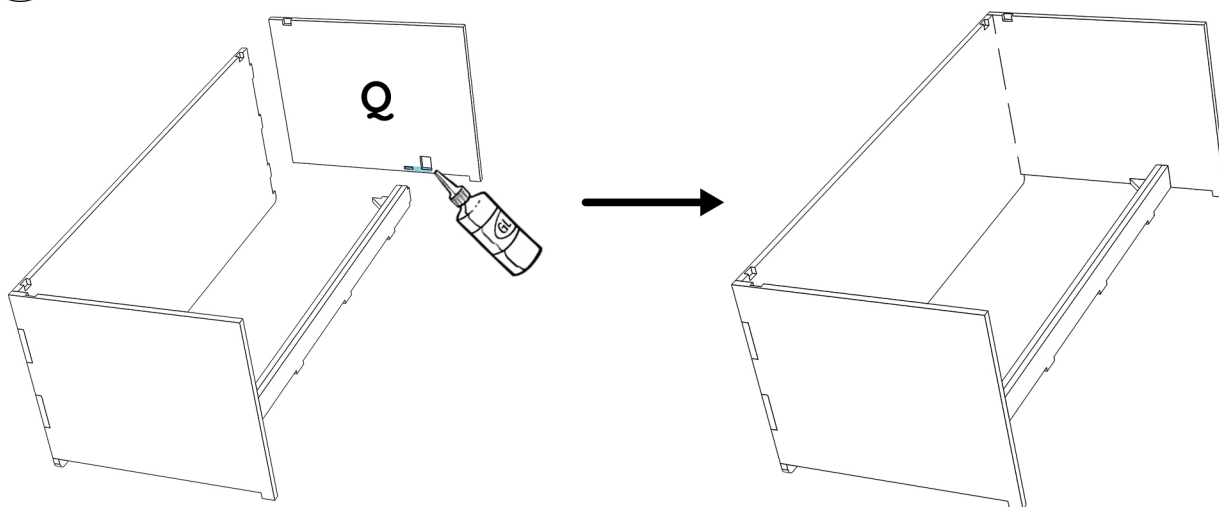


ASSEMBLY 120 CM UNIT

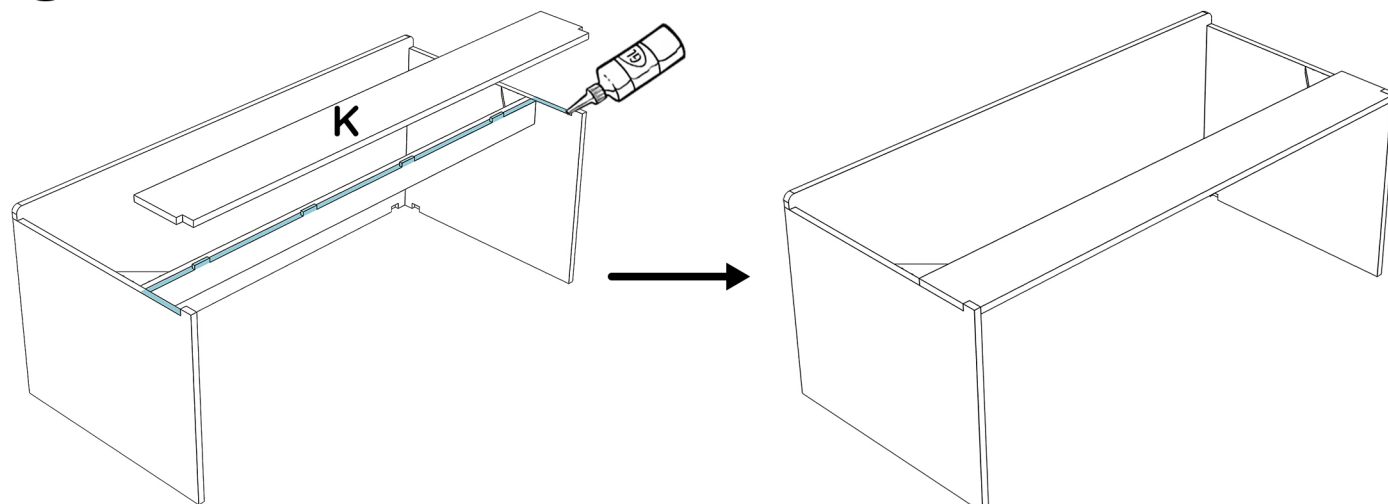
- 5** Apply glue to the notches and joints then assemble a **U** angle with the **T** piece.



- 6** Apply glue to the notches and joints then assemble part **Q** with the rest of the furniture.

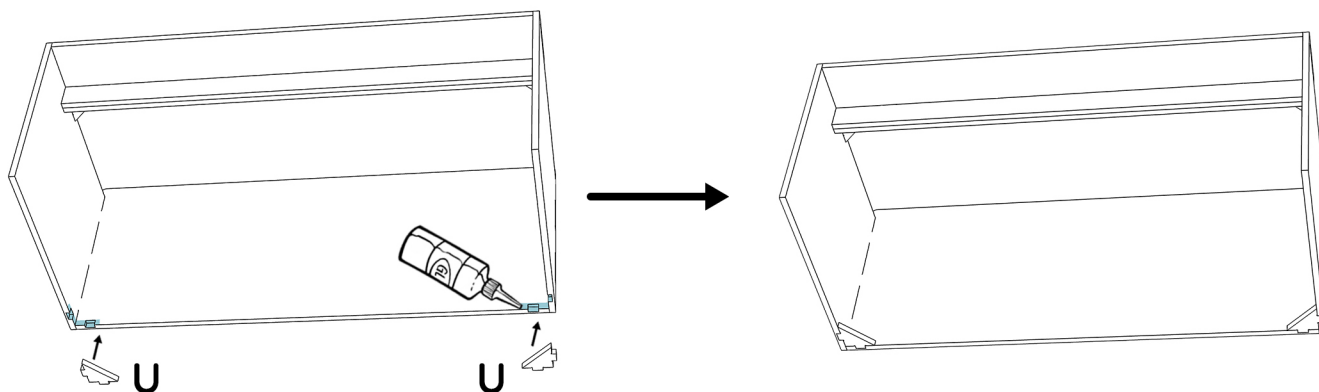


- 7** Apply glue to the notches and joints then assemble part **K** with the rest of the furniture.

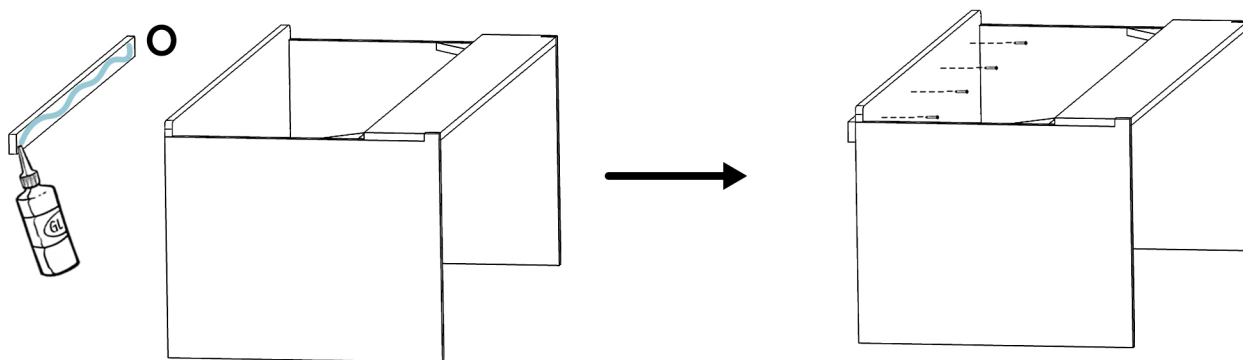


ASSEMBLY 120 CM UNIT

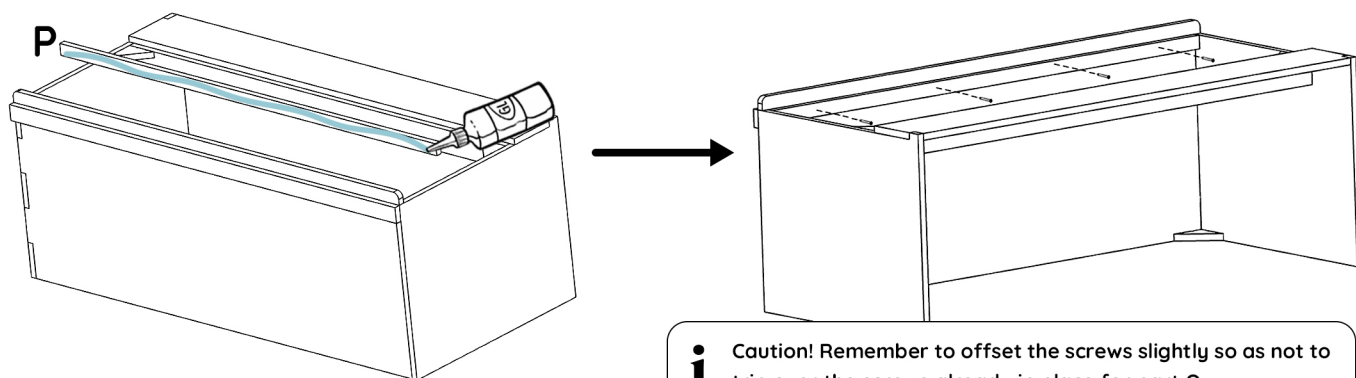
- 8 Apply glue to the notches and joints then assemble two **U** angles as shown below.



- 9 Apply glue to the joints, then assemble part **O** with the rest of the furniture, then screw it from the inside with four thin 25 mm screws. **Be careful to align this part well.**



- 10 Apply glue to the joints and then assemble part **P** with the rest of the furniture, then screw it from the inside of the furniture with four thin 25 mm screws. **Be careful to align this part well.**

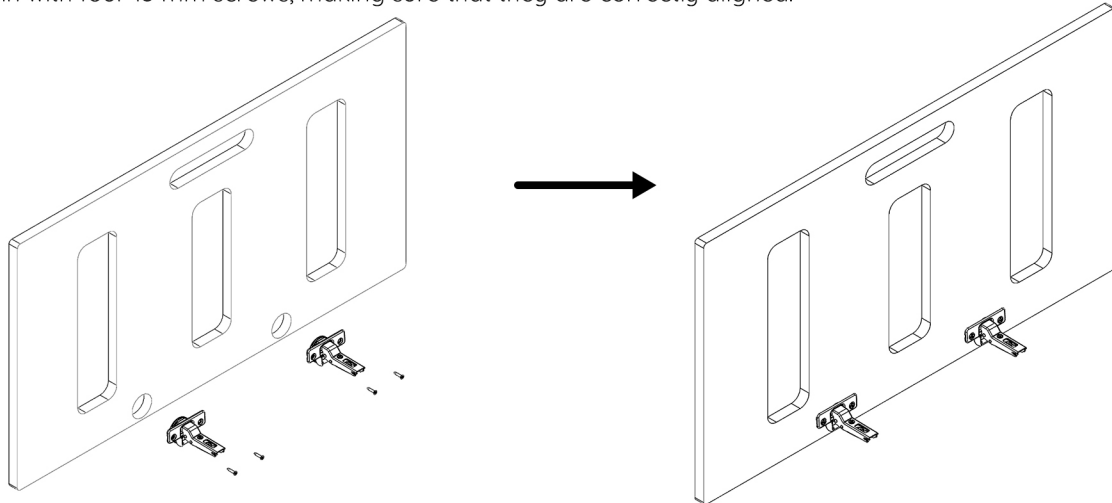


TOP ASSEMBLY

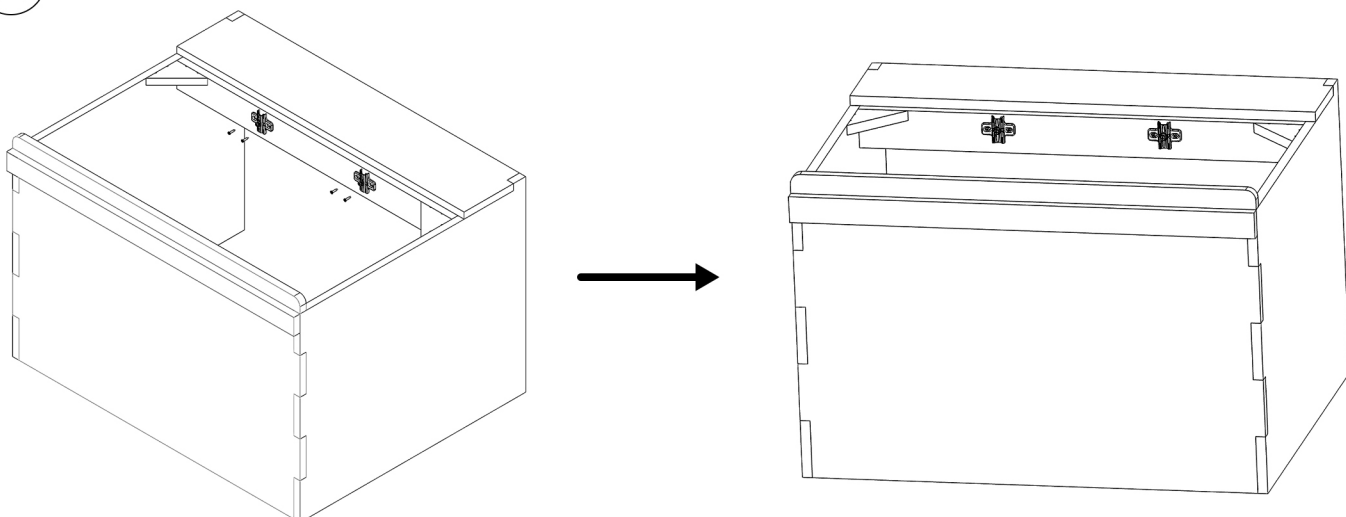


Estimated time: 30 min

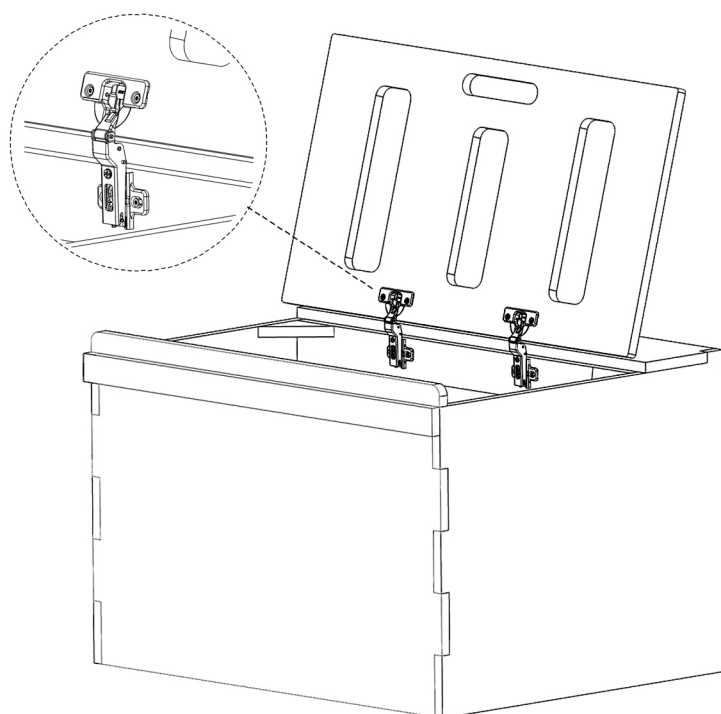
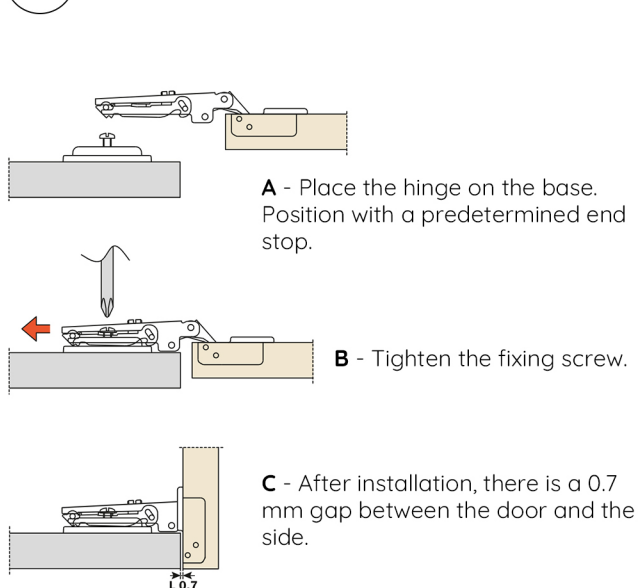
- 1 Place the soft close hinges in the locations provided on the **D** (70 cm unit) or **L** (120 cm unit) top, then screw them in with four 15 mm screws, making sure that they are correctly aligned.



- 2 Screw the crosshead bases into the pilot holes with four 15mm screws.



- 3 Assemble the top hinges onto the bases fixed to the furniture as shown below.



HAPPY ASSEMBLY!

If you have any comments regarding the assembly,
you can let us know by email:
sav@simplevans.eu

**ALL
TUTORIALS
HERE**



SHARE YOUR EPIC VAN BUILD JOURNEY WITH US AND THE COMMUNITY!

#SimpleVansLife

**Snap some pics or record a video of your awesome furniture
installed and ready for adventure.**

We'll feature the best content on our social media channels,
and the most inspiring builds will win incredible prizes!

