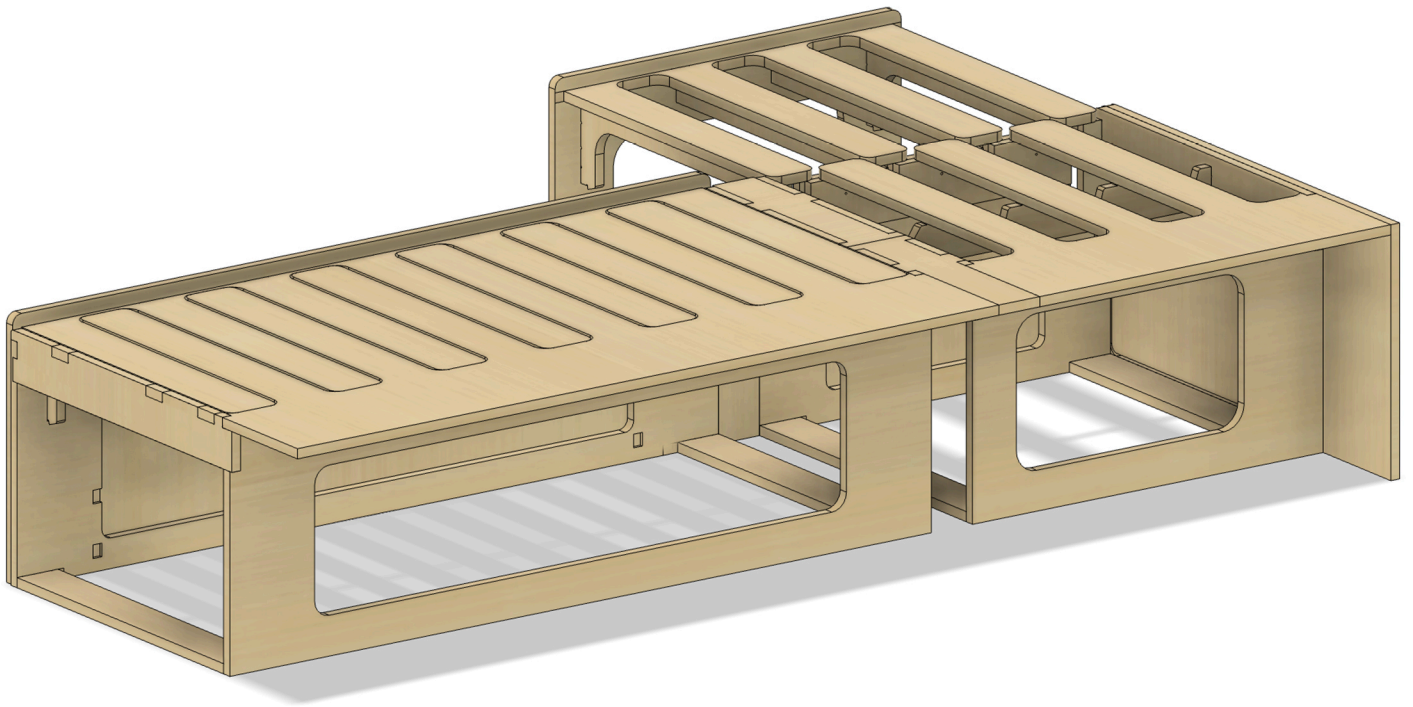


# Assembly guide

# **B130 BED**

## Version 1

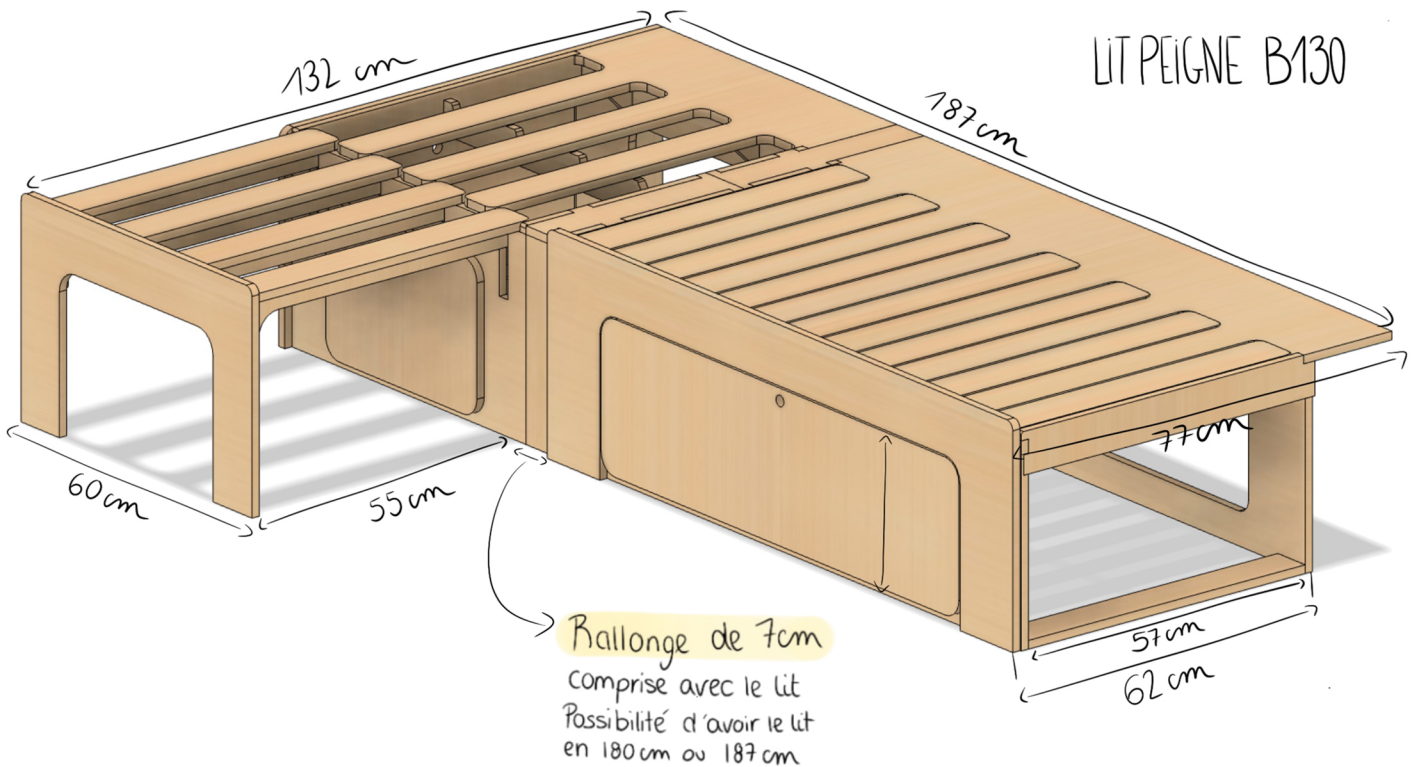


**WELCOME ABOARD!**

Let's assemble Your dream furniture and get you on the road.

**LET'S GO !**

**i** If you have **D9** or **D10** drawers, please refer to the assembly instructions on the instruction sheets available on the tutorial page or at the link below.  
D9 Notice / D10 Notice



## SHOW OFF YOUR SKILLS & INSPIRE THE VANLIFE COMMUNITY!

Share your build on Facebook, Instagram ou TikTok.

Use #SimpleVansLife :

**Best content wins awesome prizes.**





# Materials required for assembly

- Masking tape
- Square (optional)
- PZ1 & PZ2 screwdriver
- Wood glue (slow-drying recommended)
- Damp cloth (or paper towel)
- Putty knife or ruler (for positioning hinges)
- Pencil (for marking hinge placement)

## Package contents :



Screw 12 mm X **42**



Screw 15 mm X **12**



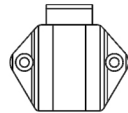
Screw 25 mm X **29**



Screw 25 mm small diameter X **6**

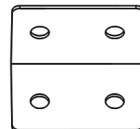


Screw 45 mm X **26**



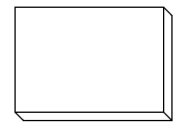
Mini-Lock

X **3**



Metal Bracket

X **2**



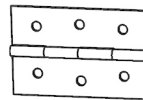
Wooden latch 5 mm

X **4**



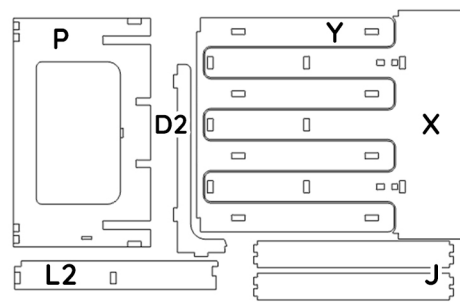
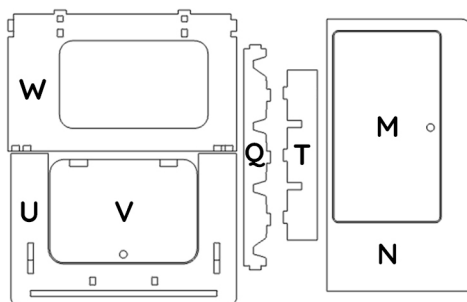
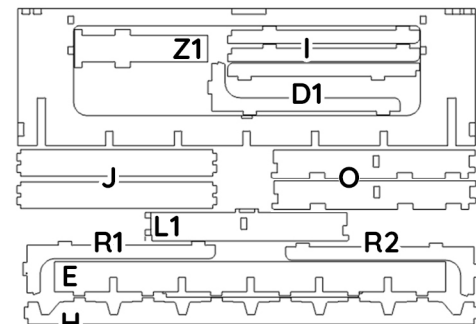
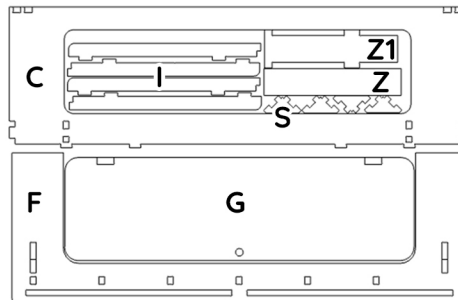
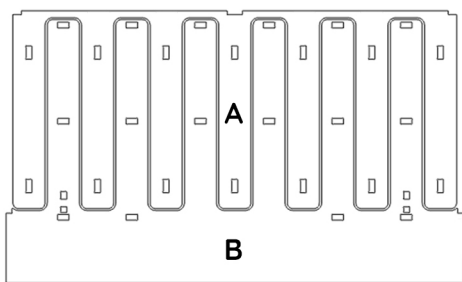
Push button

X **3**



Hinge

X **6**



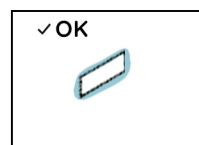
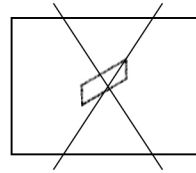
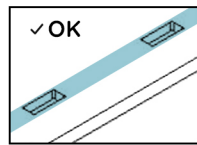
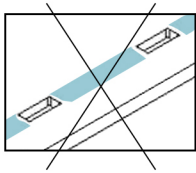
## Read before assembling the furniture

- Check for chips in the grooves
- Check that the parts are free of defects before gluing / or make a dry fitting
- Read the entire instructions carefully before final assembly with glue
- Wipe off excess glue with a damp cloth immediately after gluing each piece
- Make any cuts (if necessary) before gluing the furniture
- Protect the surrounding areas of the gluing areas with masking tape to reduce cleaning

If you have a problem with a part or accessory, please contact us by email: [sav@simplevans.eu](mailto:sav@simplevans.eu)



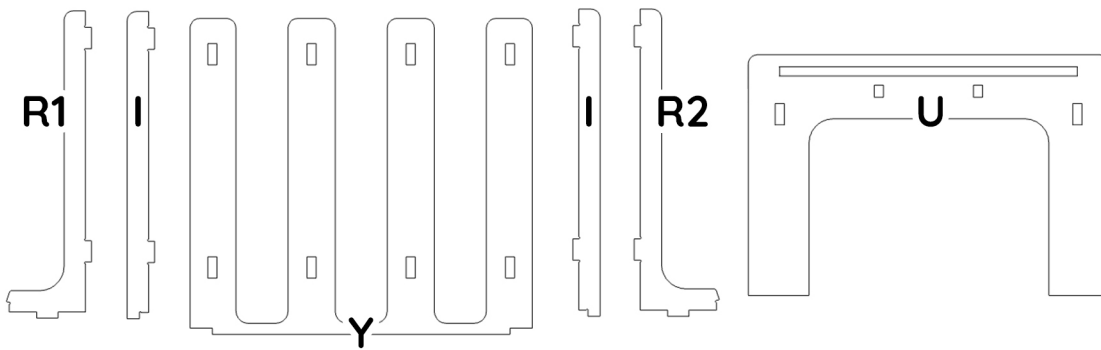
Apply a sufficient amount of glue to the contact surfaces and grooves.  
The glue should **slightly protrude from the grooves when assembled**.  
**Wipe off excess glue** with a damp cloth after assembly.



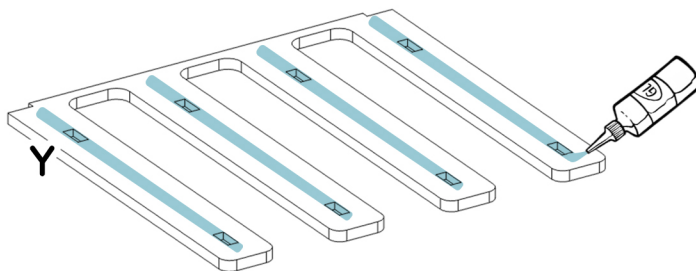
glue that slightly protrudes  
after assembly

## Step 1: Assembling the 60cm Mobile Bed Base

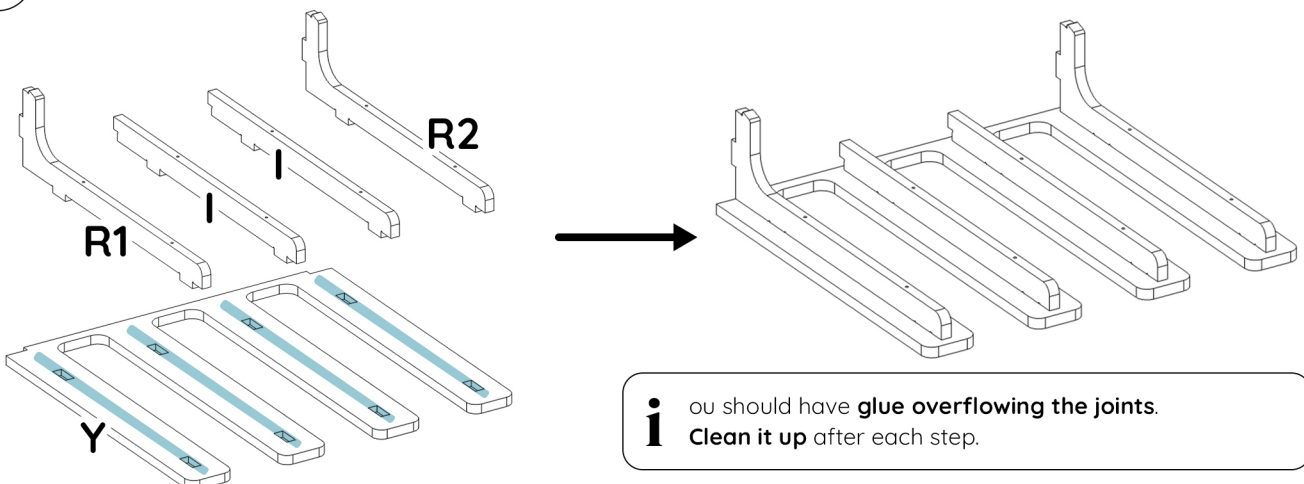
**1** Gather the pieces **R1/R2/Y/U/2x I** and arrange them as shown below



**2** Apply wood glue as shown in the picture below to part **Y**



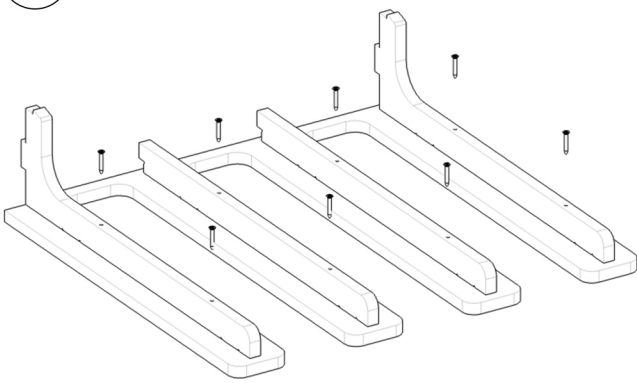
**3** Assemble the 2 slats **R1/R2** and the 2 slats **I** with part **Y**



**i** You should have **glue overflowing the joints**.  
**Clean it up** after each step.

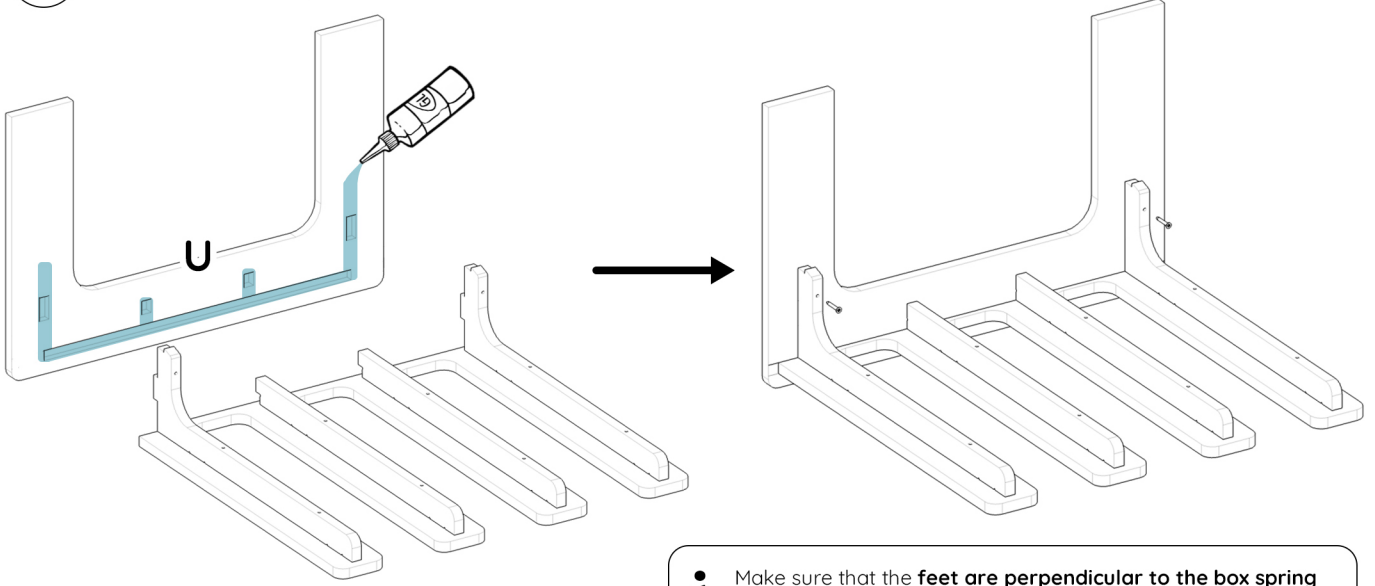
# Step 1: Assembling the 60cm Mobile Bed Base

**4** Screw the slats as below with the **45mm screws**.



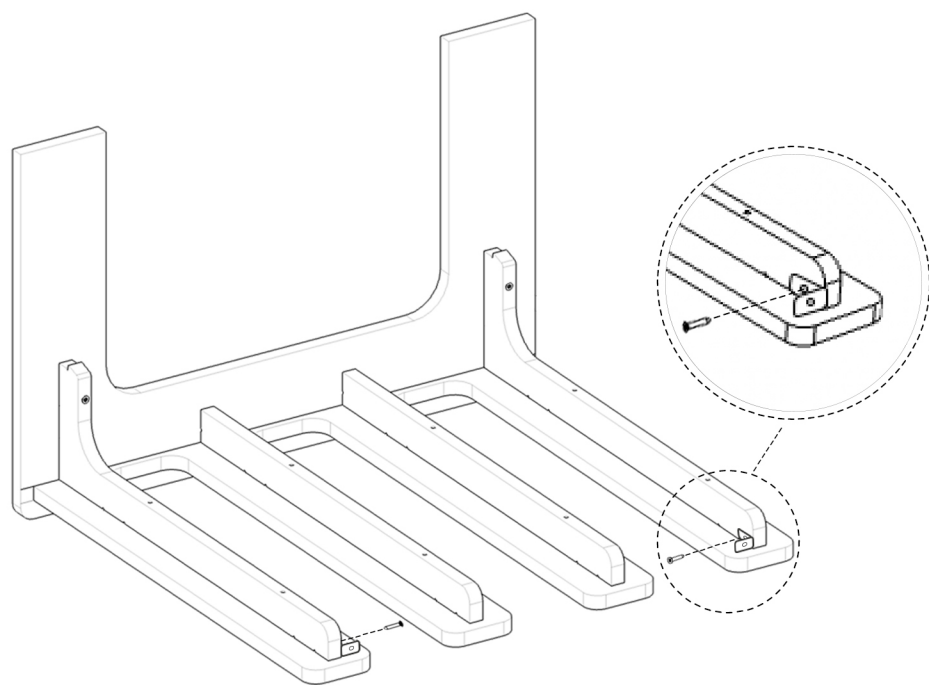
**i** The screws are used to hold the slats in place while the glue dries, so you can continue assembly. It is the glue that ensures the strength of the bed, not the screws. **Do not screw too hard**, as this could go through the wood. Tighten the screws just enough so that the glue comes out of the joint.

**5** Apply wood glue as on part **U** then assemble the bed base and the facade together. Then screw the **R1/R2** slats to the **U** facade.



**i** Make sure that the **feet are perpendicular to the box spring slats**.

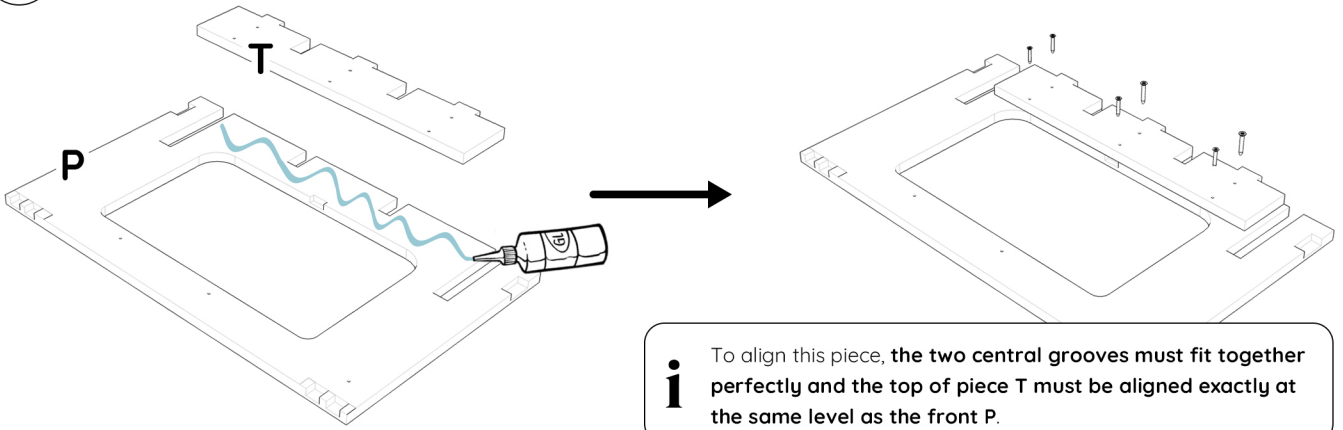
**6** Screw the **2 small brackets** as below using **15 mm screws** on the inside edge of the exterior slats.





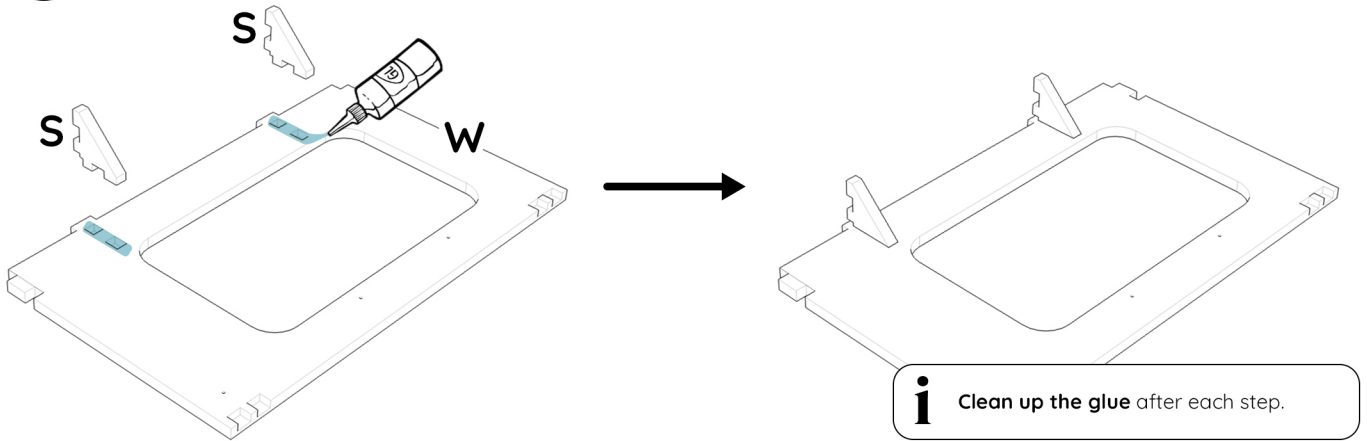
## Step 2: assembly of the fixed part length 60 cm

- 1 Position, glue and align part **T** at the rear of the facade **P** and screw it with 6 25 mm screws



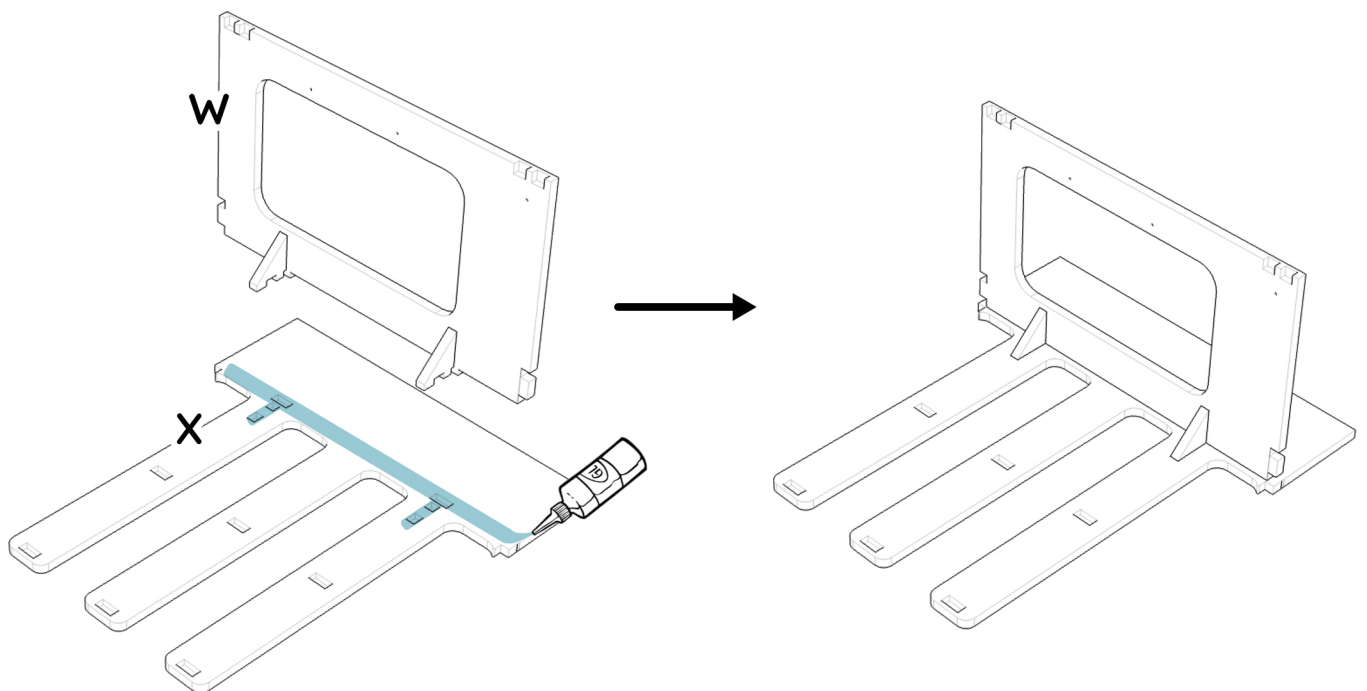
**i** To align this piece, the two central grooves must fit together perfectly and the top of piece T must be aligned exactly at the same level as the front P.

- 2 Apply glue and assemble the brackets **S** on part **W**



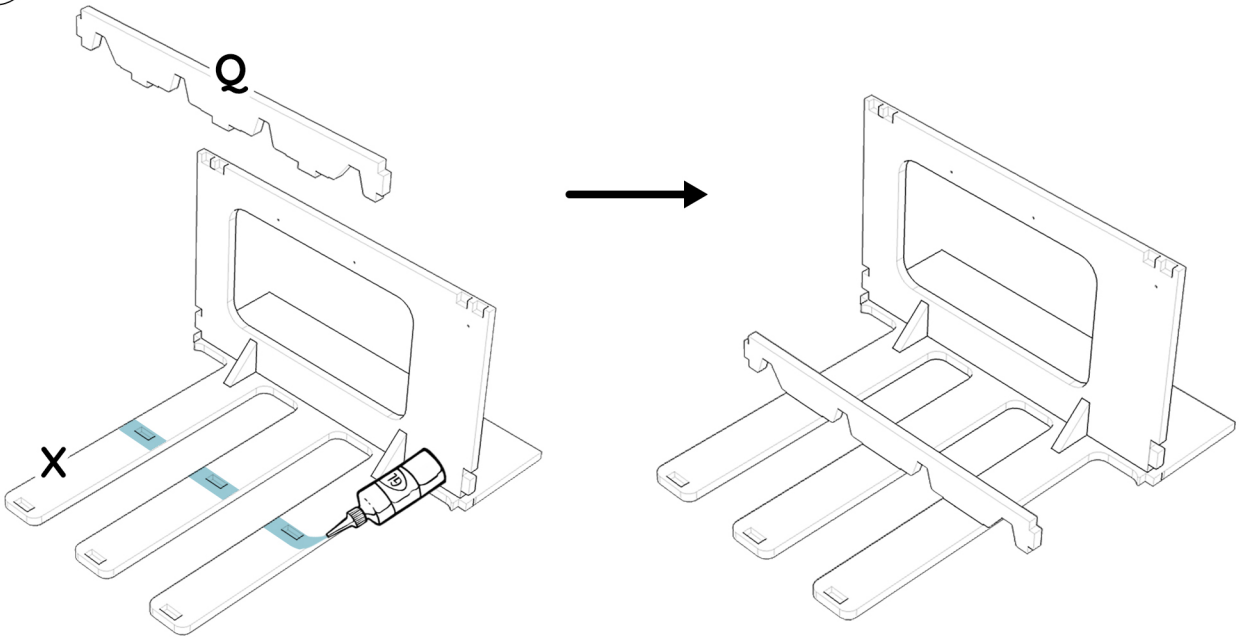
**i** Clean up the glue after each step.

- 3 Apply glue and assemble part **W** with part **X**

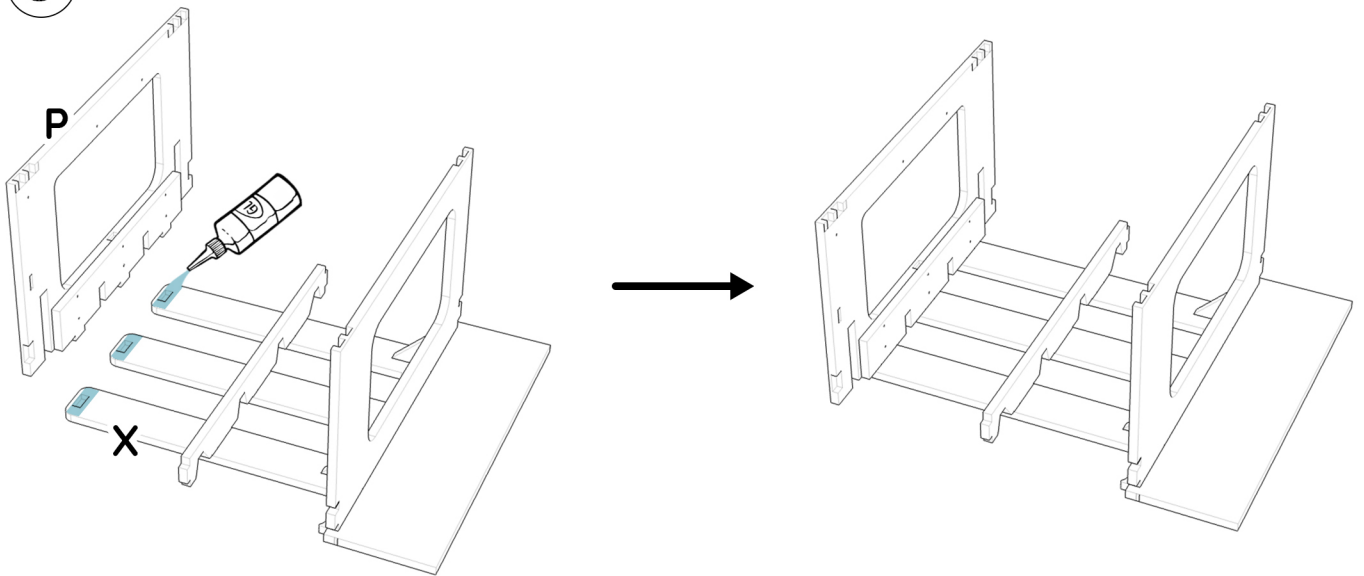


## Step 2: assembly of the fixed part length 60 cm

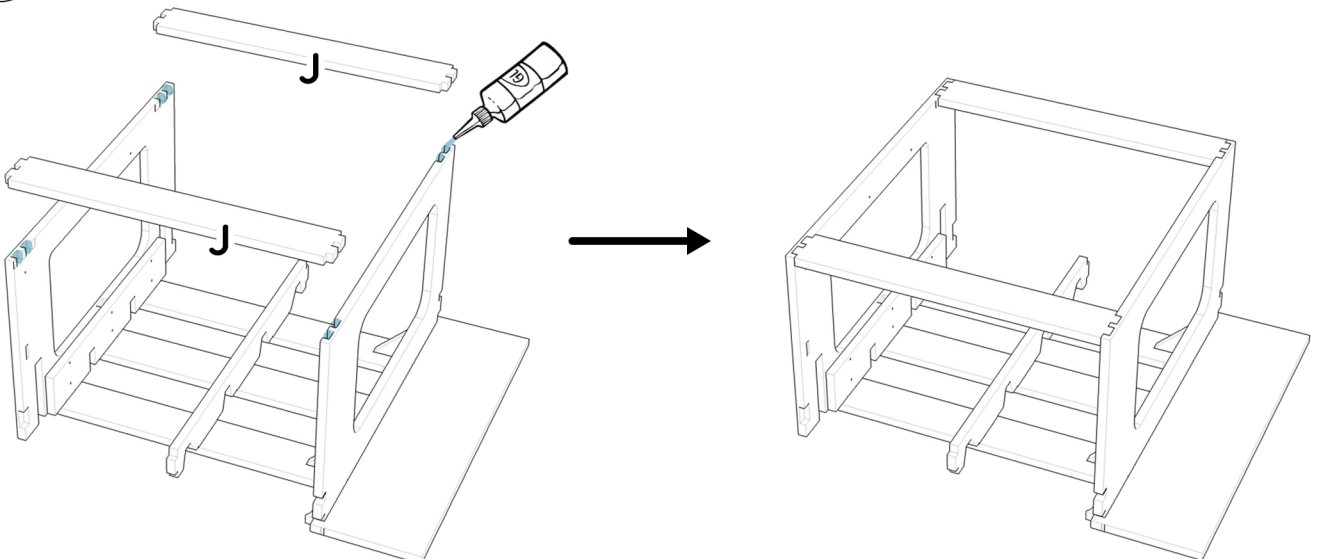
- 4 Apply glue and assemble part **Q** with part **X**



- 5 Apply glue and assemble part **P** with part **X** as shown below



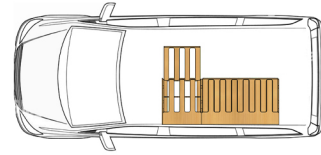
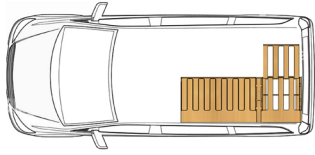
- 6 Apply glue and assemble the **J** pieces as shown below



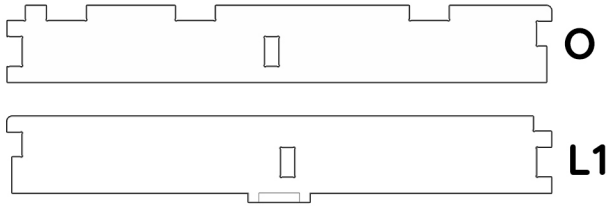
## Step 2: assembly of the fixed part length 60 cm



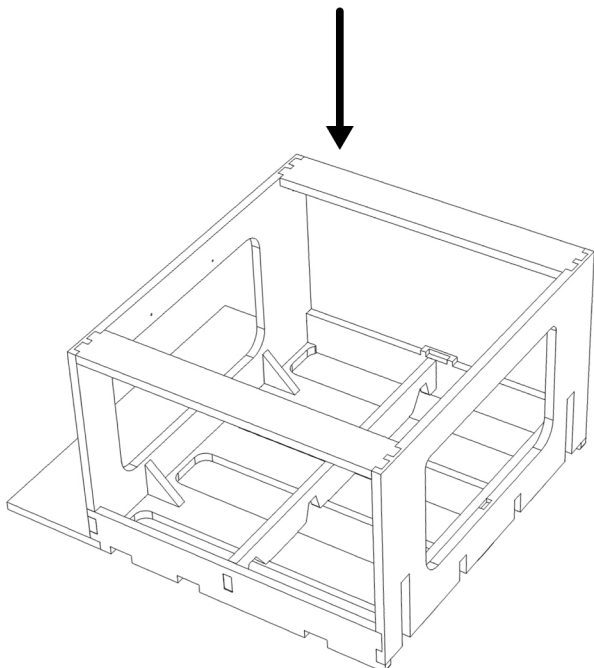
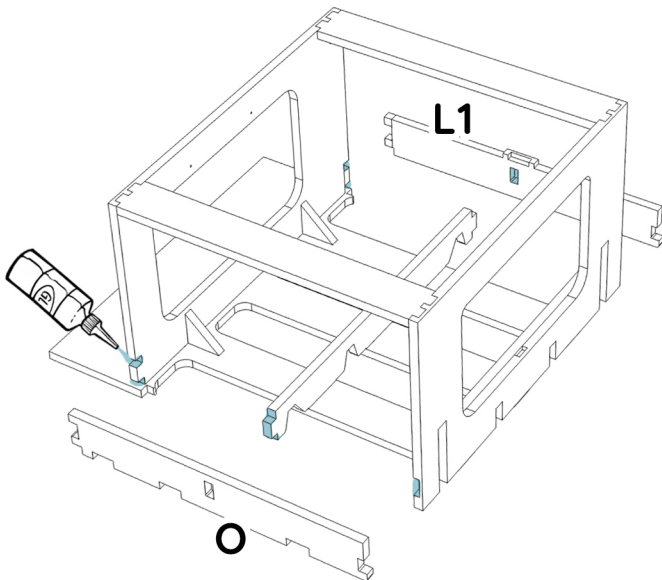
**WARNING:** Depending on whether you choose to position the 60 cm piece at the front or back of the van, be sure to read the part number for the piece to be assembled below!



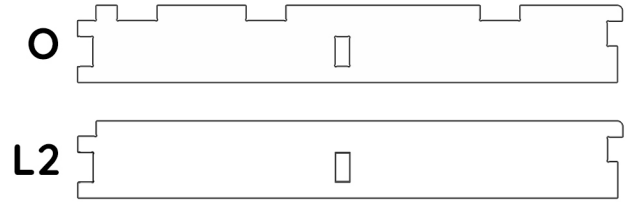
Part 60 cm at the back of the van  
Use parts **O** and **L1**



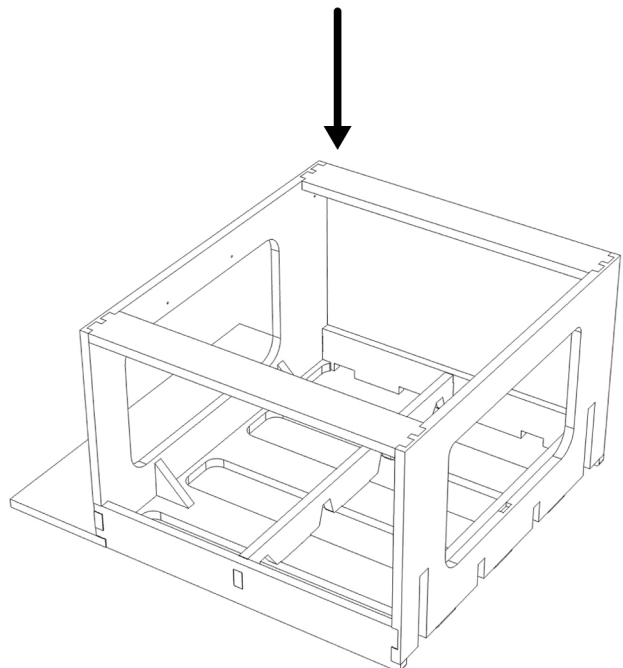
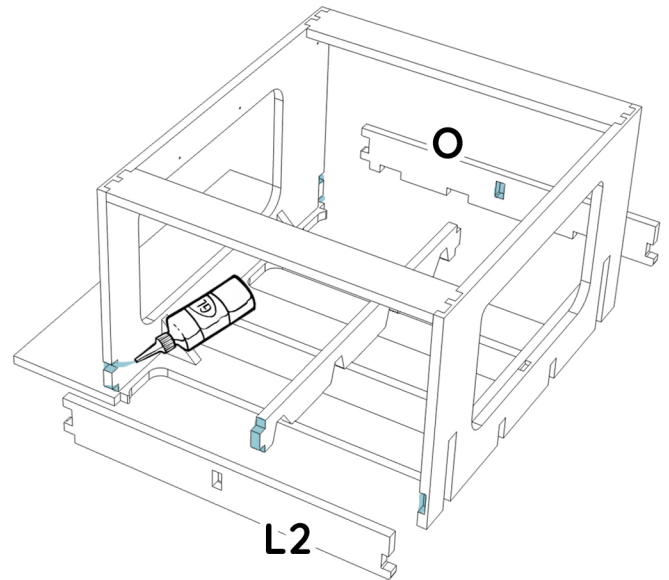
Apply glue and assemble part **O** & **L1**



Part 60 cm at the front of the van  
Use parts **O** and **L2**



Apply glue and assemble part **O** & **L2**

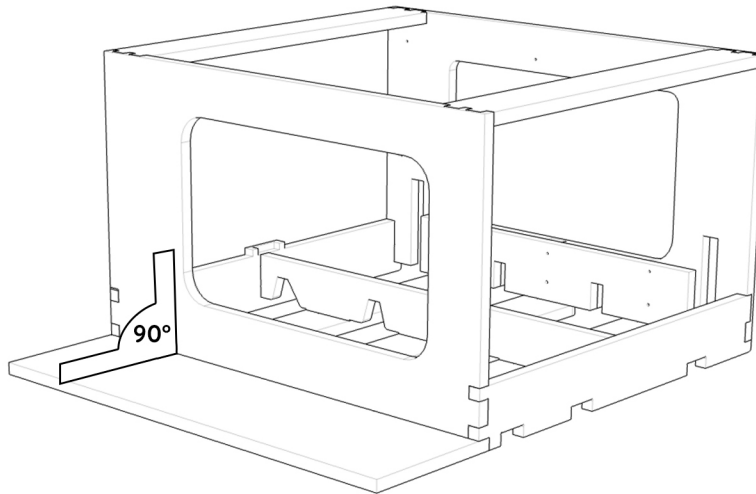


7  
OR

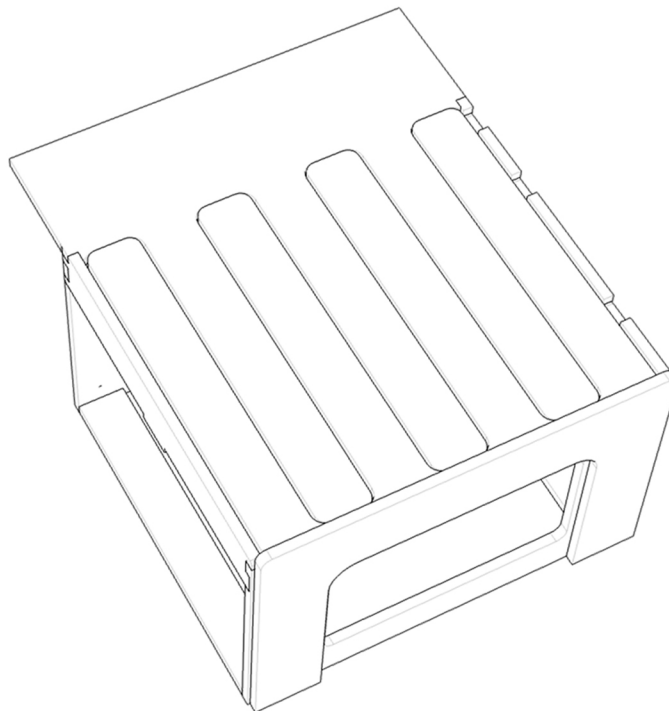


## Step 2: assembly of the fixed part length 60 cm

- 9** Check the squareness with a square and adjust if necessary with a clamp for the duration of the drying time of the wood glue.



- 10** Insert the sliding part of the bed and make sure all the slats of the bed base are evenly spaced. Warning, this spacing can no longer be adjusted after gluing.



---

## Congratulations on completing the first module of your bed!

**We hope you're proud of yourself.**

The next module will take 1 hour, so if you're not sure you have time to finish it, you can stop here.

Did any step seem difficult or poorly explained?

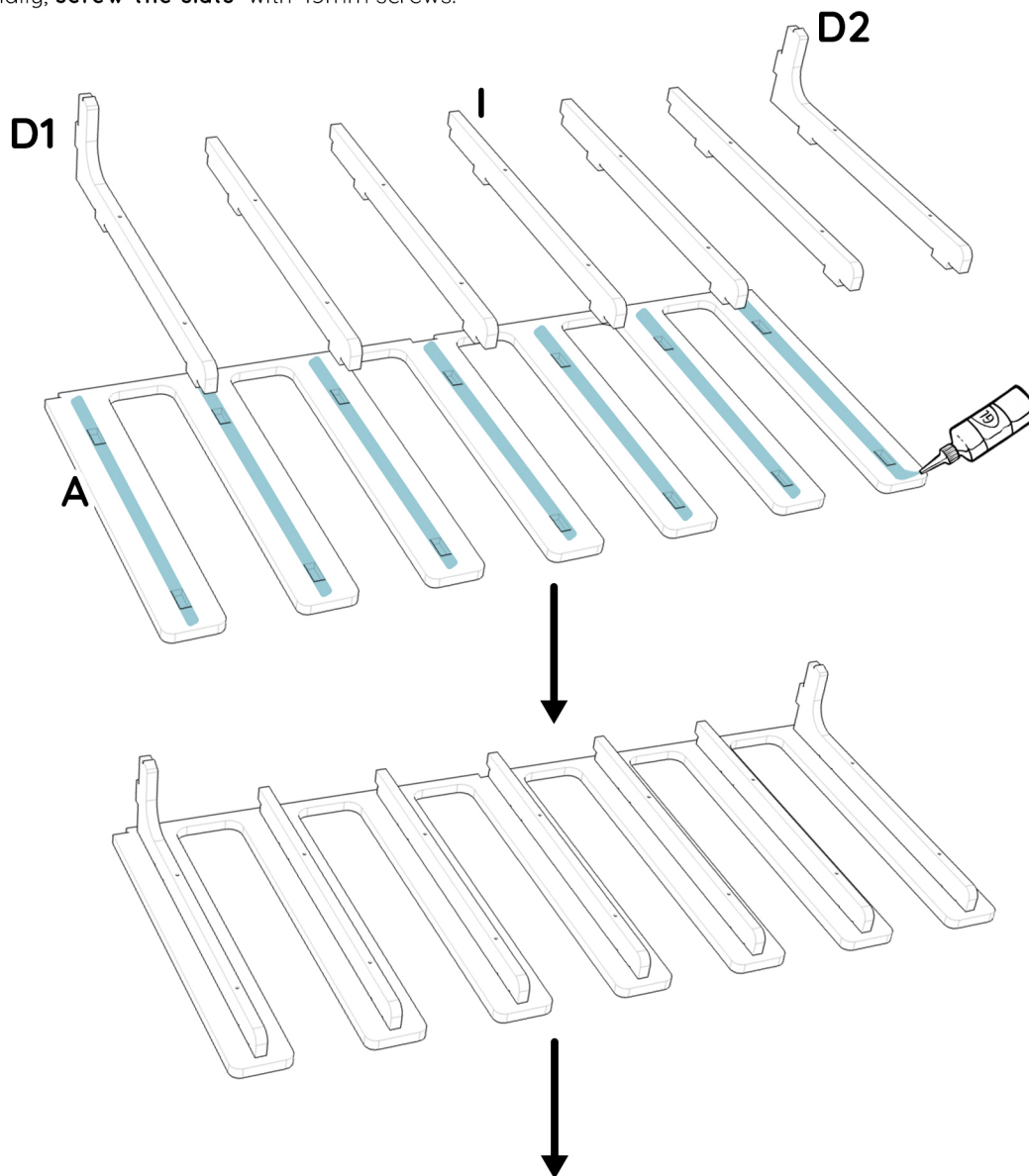
**We are always looking to improve and your feedback will be greatly appreciated!**

**Let's get back to it!**

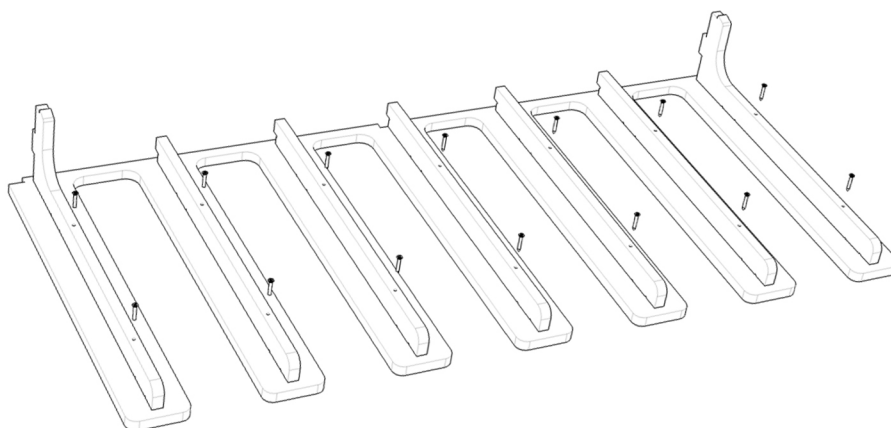


## Step 3: Assembly of the sliding bed base, 120 cm part

- 1 Apply wood glue to piece **A**, then assemble the 2 slats **D1/D2** and the 5 slats **I** with piece **A**. Finally, **screw the slats** with 45mm screws.

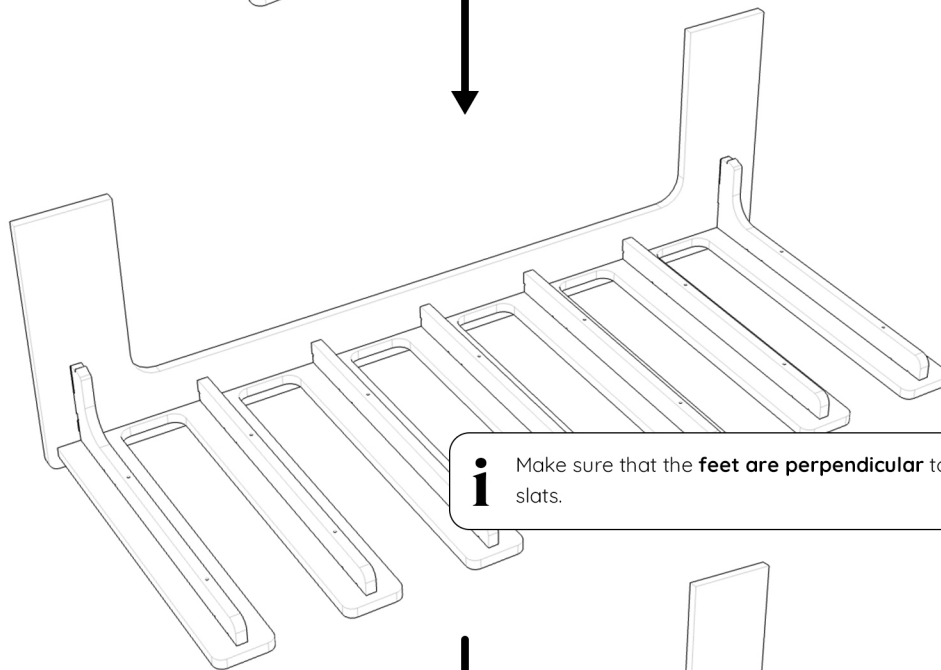
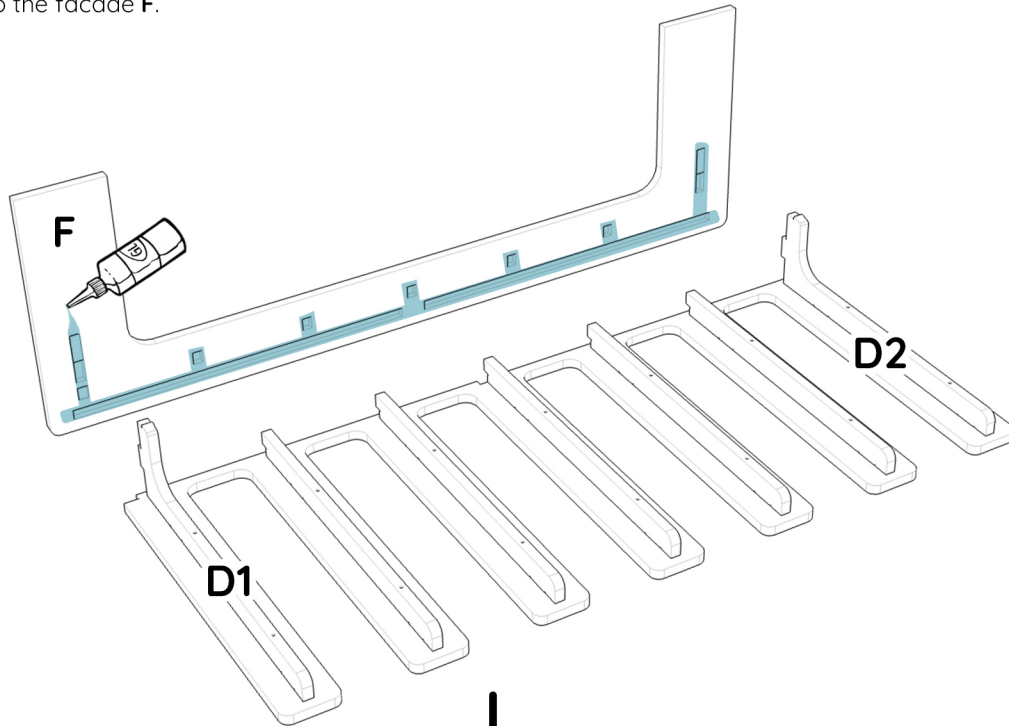


**i** The screws are used to hold the slats in place while the glue dries, so you can continue assembling the bed. It is the **glue that provides the strength of the bed**, not the screws. **Do not overtighten the screws**, as this could damage the wood. **Tighten the screws just enough for the glue to squeeze out of the joint.**

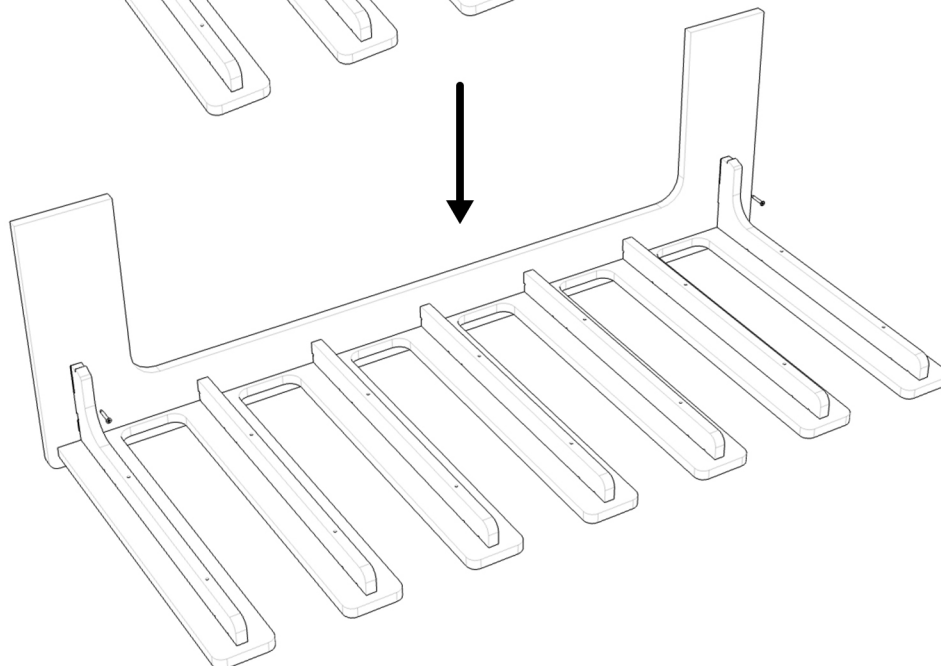


## Step 3: Assembly of the sliding bed base, 120 cm part

- 2 Apply wood glue to part **F**, then assemble the bed base and the facade together. Finally, screw the slats **D1/D2** to the facade **F**.



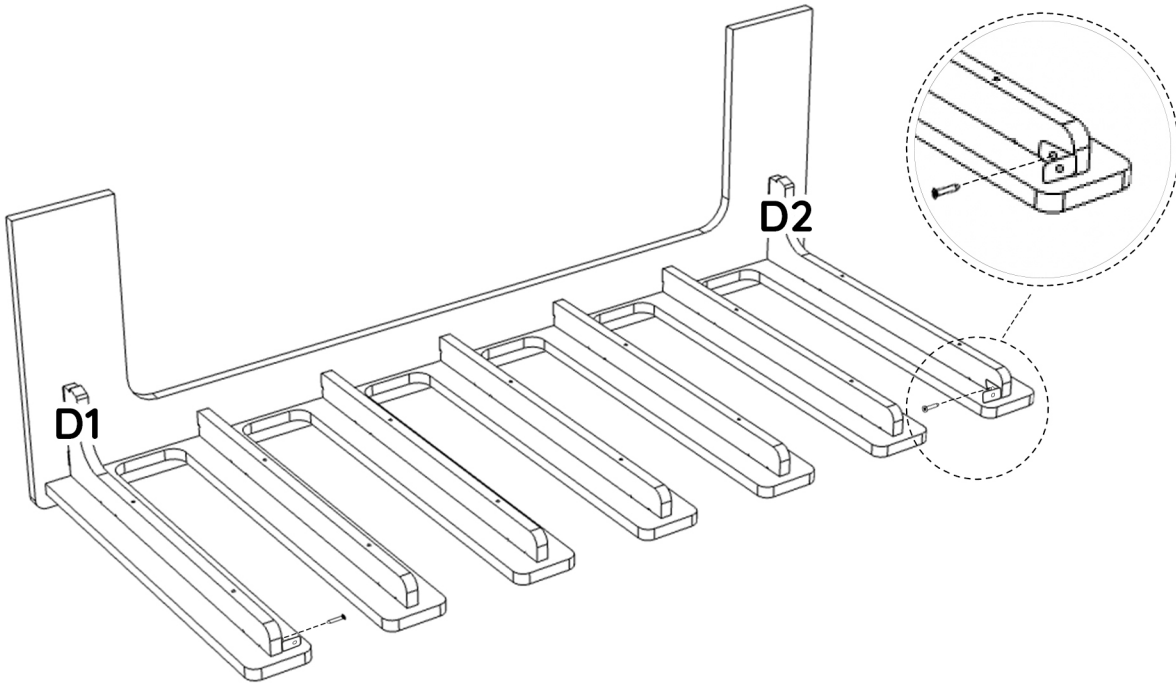
**i** Make sure that the **feet are perpendicular** to the box spring slats.





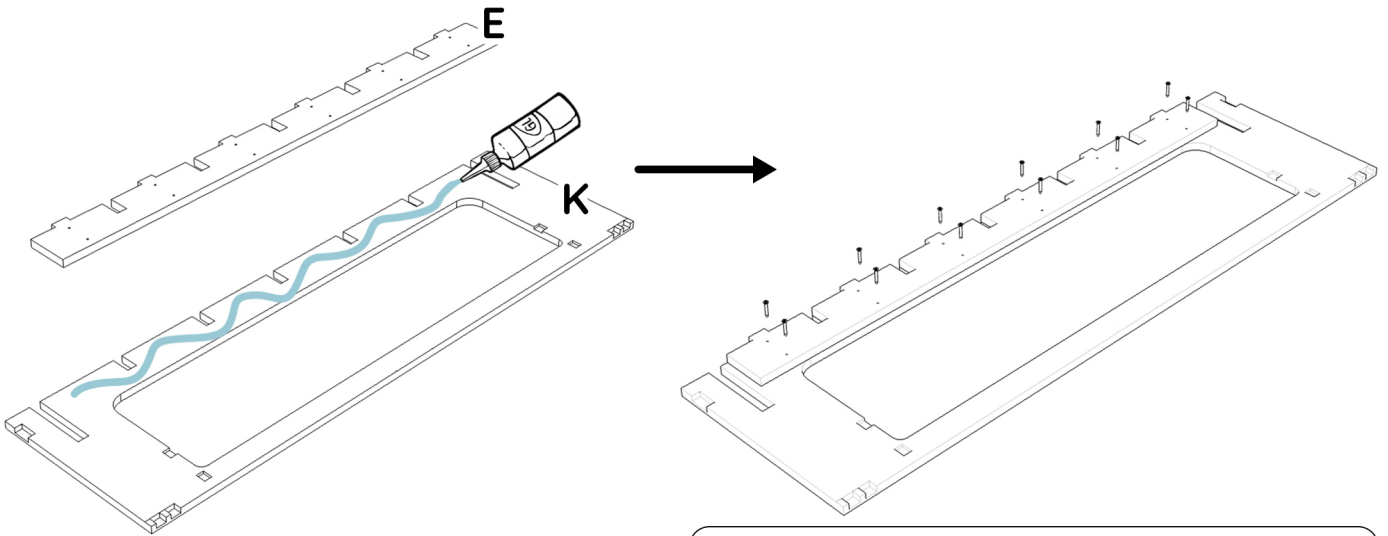
# Step 3: Assembly of the sliding bed base, 120 cm part

3 Attach the 2 small brackets using 15mm screws to the inner edge of the outer slats D1 and D2.



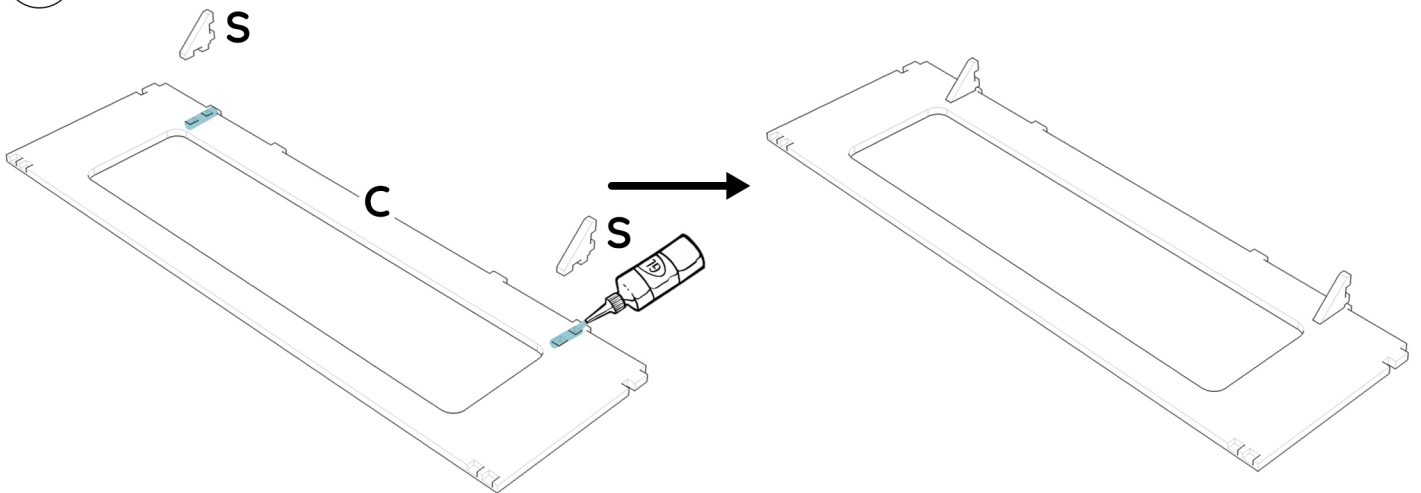
## Step 4: Assembling the 120cm Fixed Part

- 1 Position, glue and align part **E** at the back of the facade **K** and **screw it** with 12 screws of length 25 mm

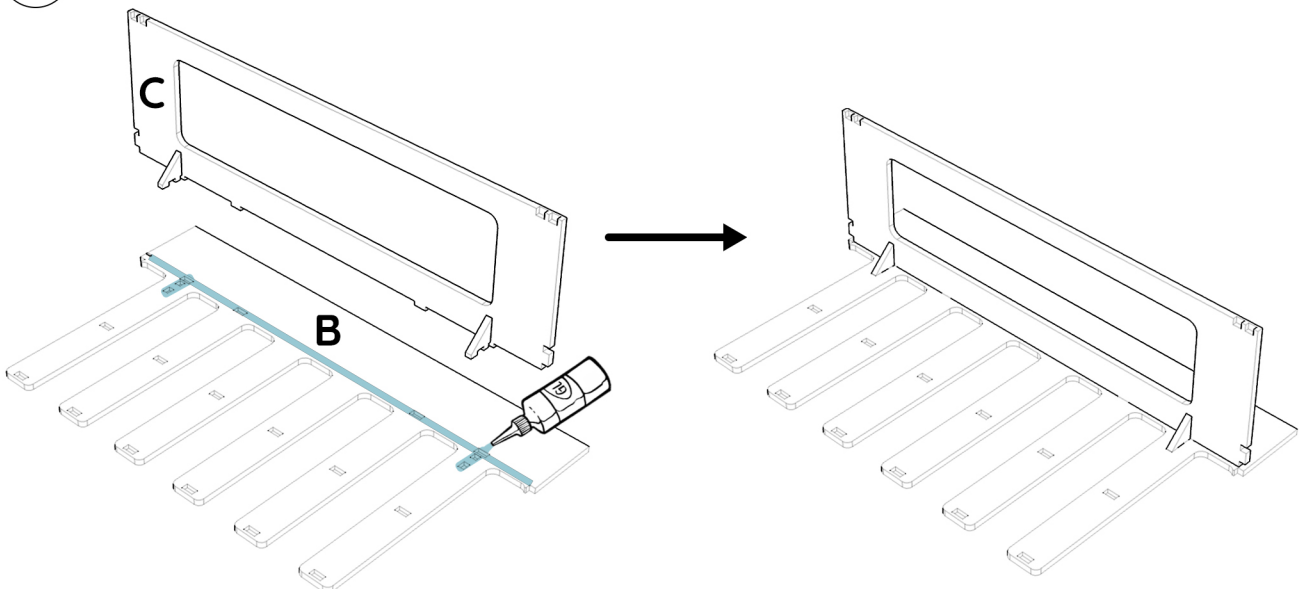


**i** To align this part, the five grooves must fit together perfectly and the top of part E must be aligned exactly flush with the front K.

- 2 Apply the glue and assemble the brackets **S** on part **C**

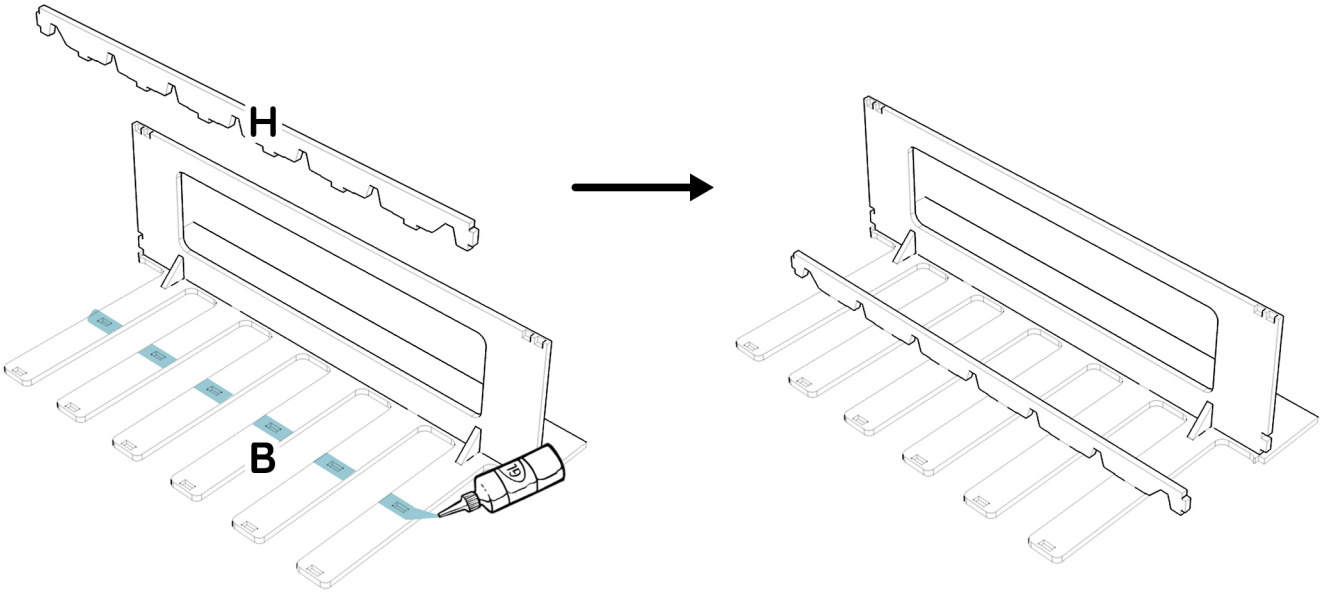


- 3 Apply glue and assemble part **C** with part **B**

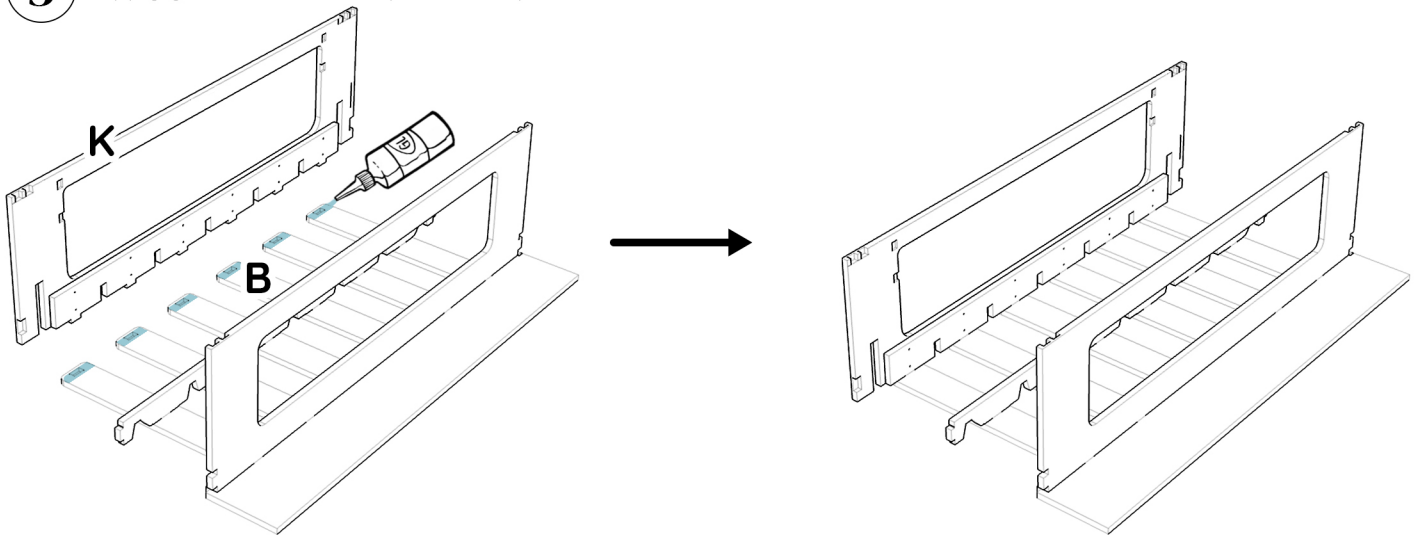


## Step 4: Assembling the 120cm Fixed Part

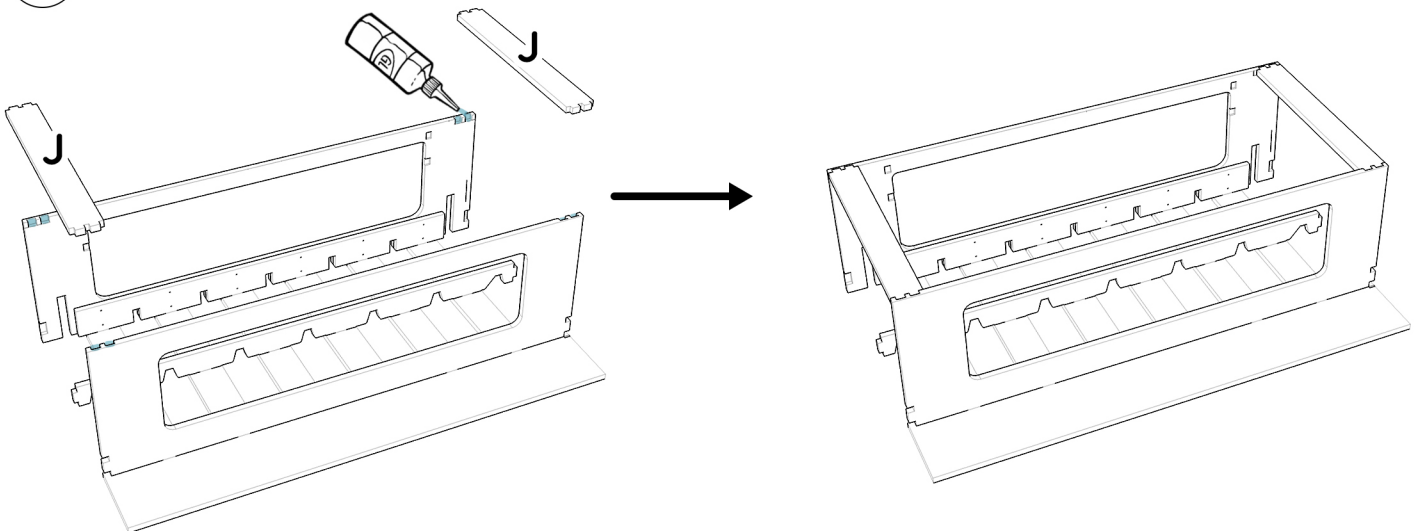
- 4 Apply glue and assemble part **H** with part **B**



- 5 Apply glue and assemble part **K** with part **B**



- 6 Apply glue and assemble parts **J** as below.

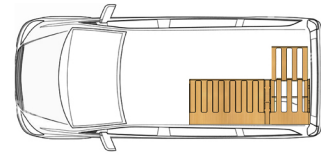
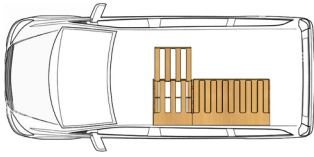




## Step 4: assembly of the fixed part length 120 cm

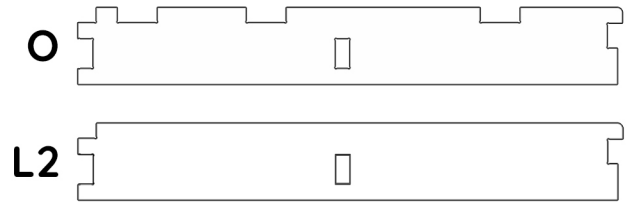
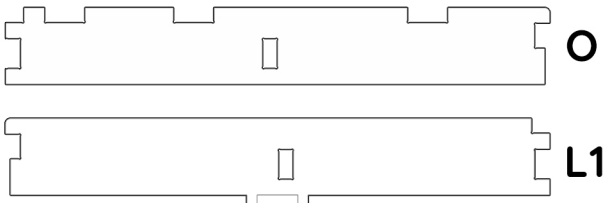


**WARNING:** Depending on whether you choose to position the 120cm part at the front or the back of the van, be sure to read the part reference to be assembled below!



120 cm part at the back of the van  
Use parts **O** and **L1**

120 cm part at the front of the van  
Use parts **O** and **L2**

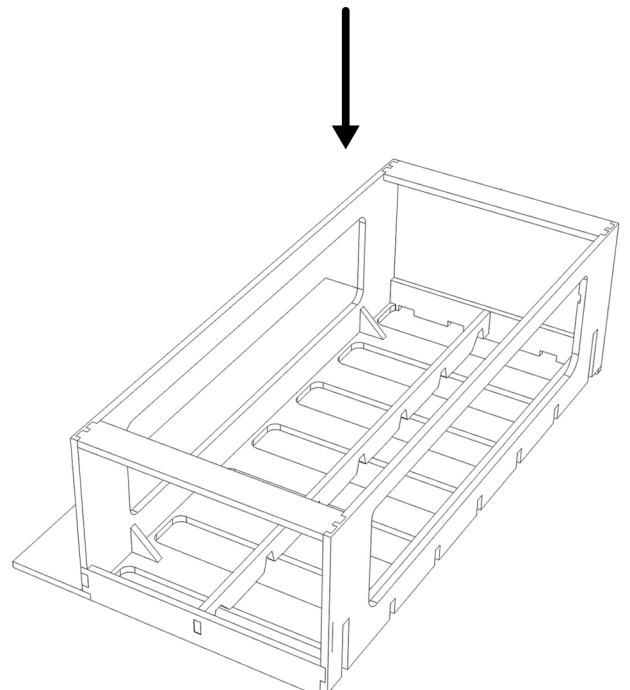
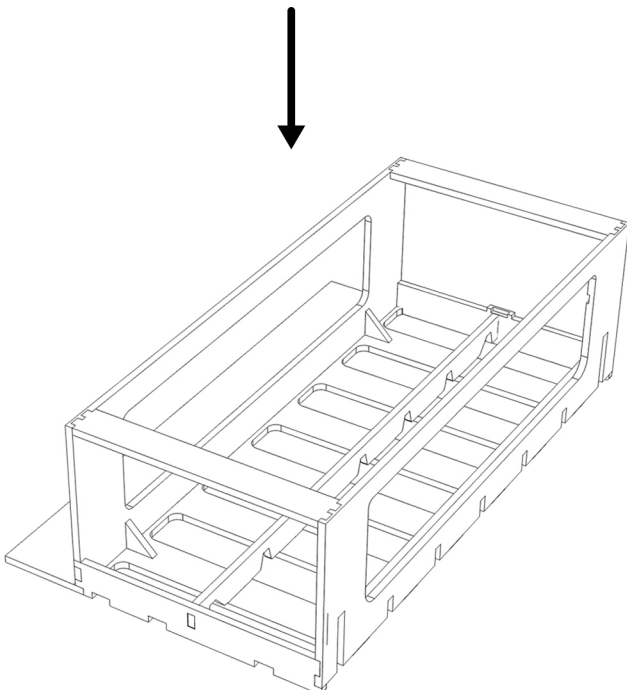
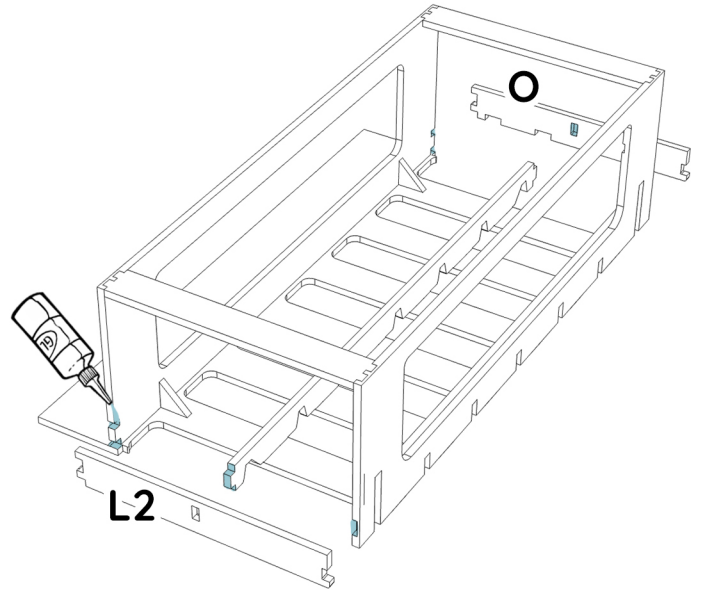
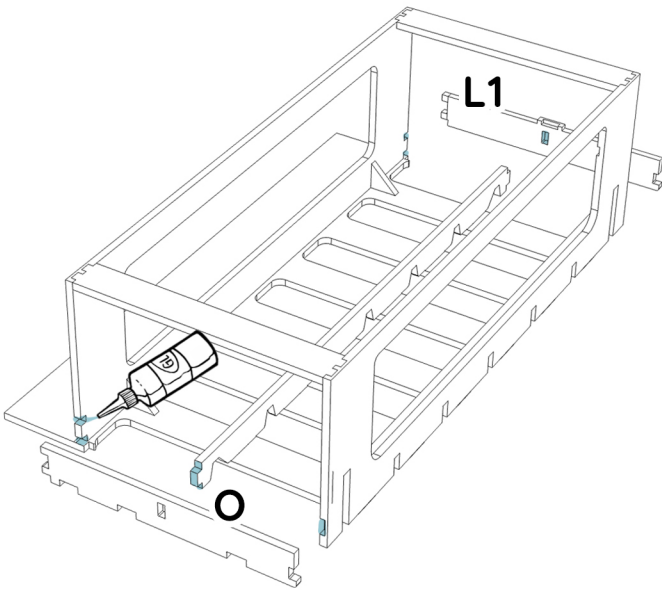


7

Apply glue and assemble part **O & L1**

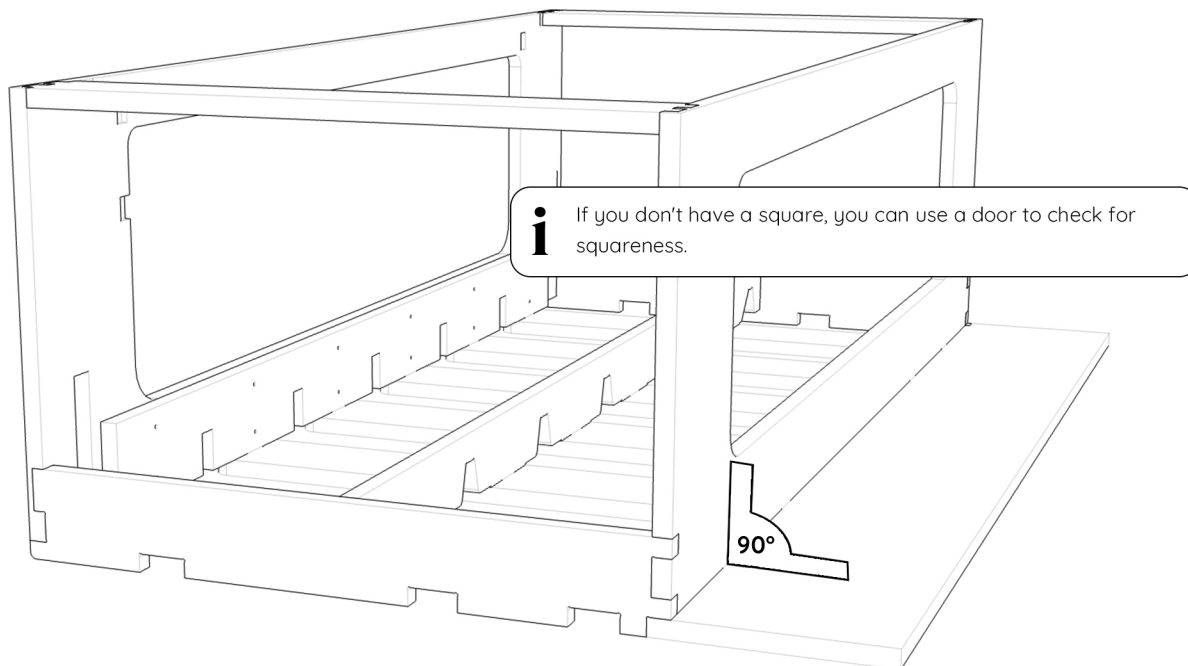
OR

Apply glue and assemble part **O & L2**

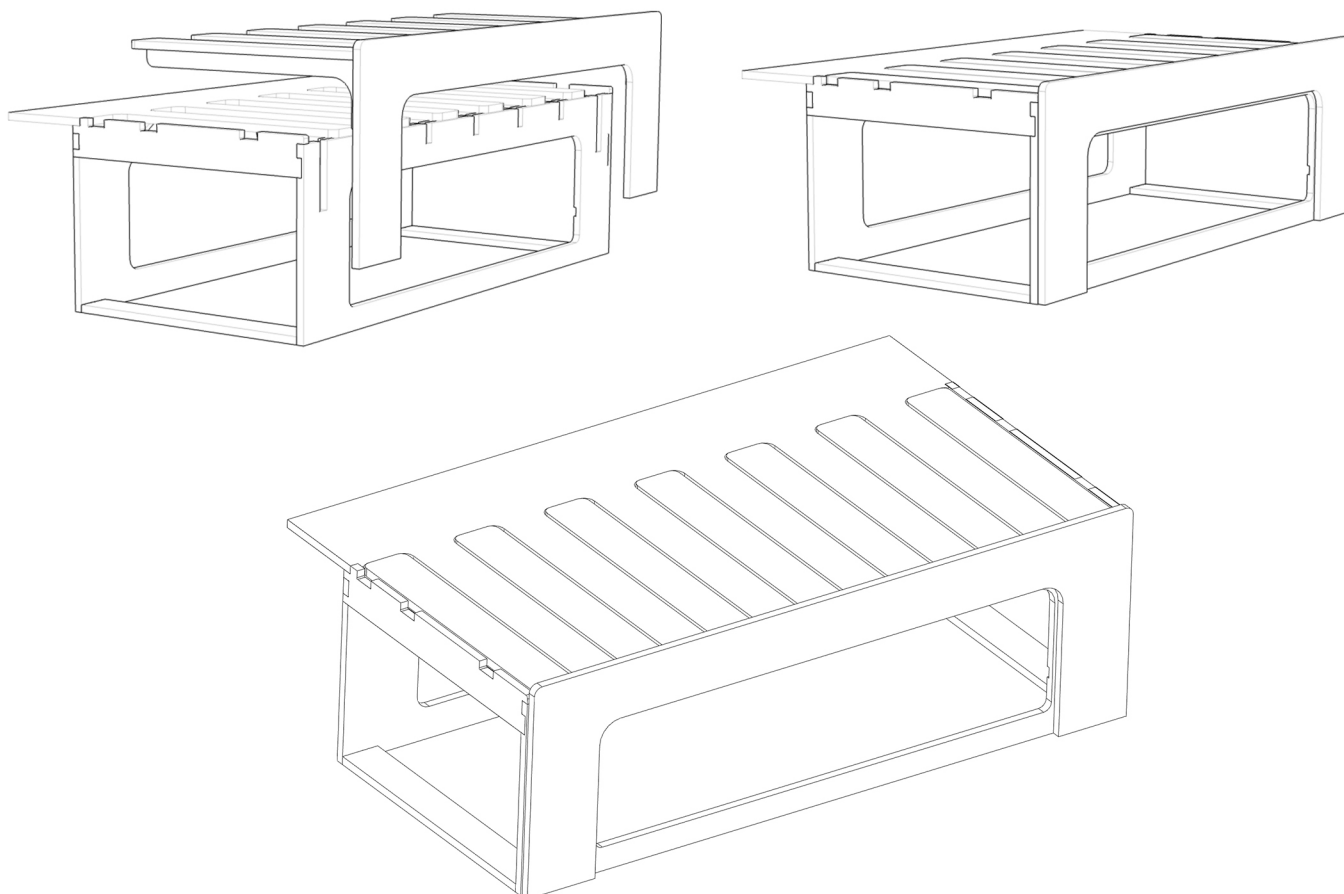


## Step 4: assembly of the fixed part length 120 cm

- 9 Check the squareness with a square and adjust as needed with a clamp during the drying time of the wood glue.



- 10 Insert the sliding part of the bed and make sure that all the slats of the bed base are equally spaced. **Warning, this spacing can no longer be adjusted after gluing.**



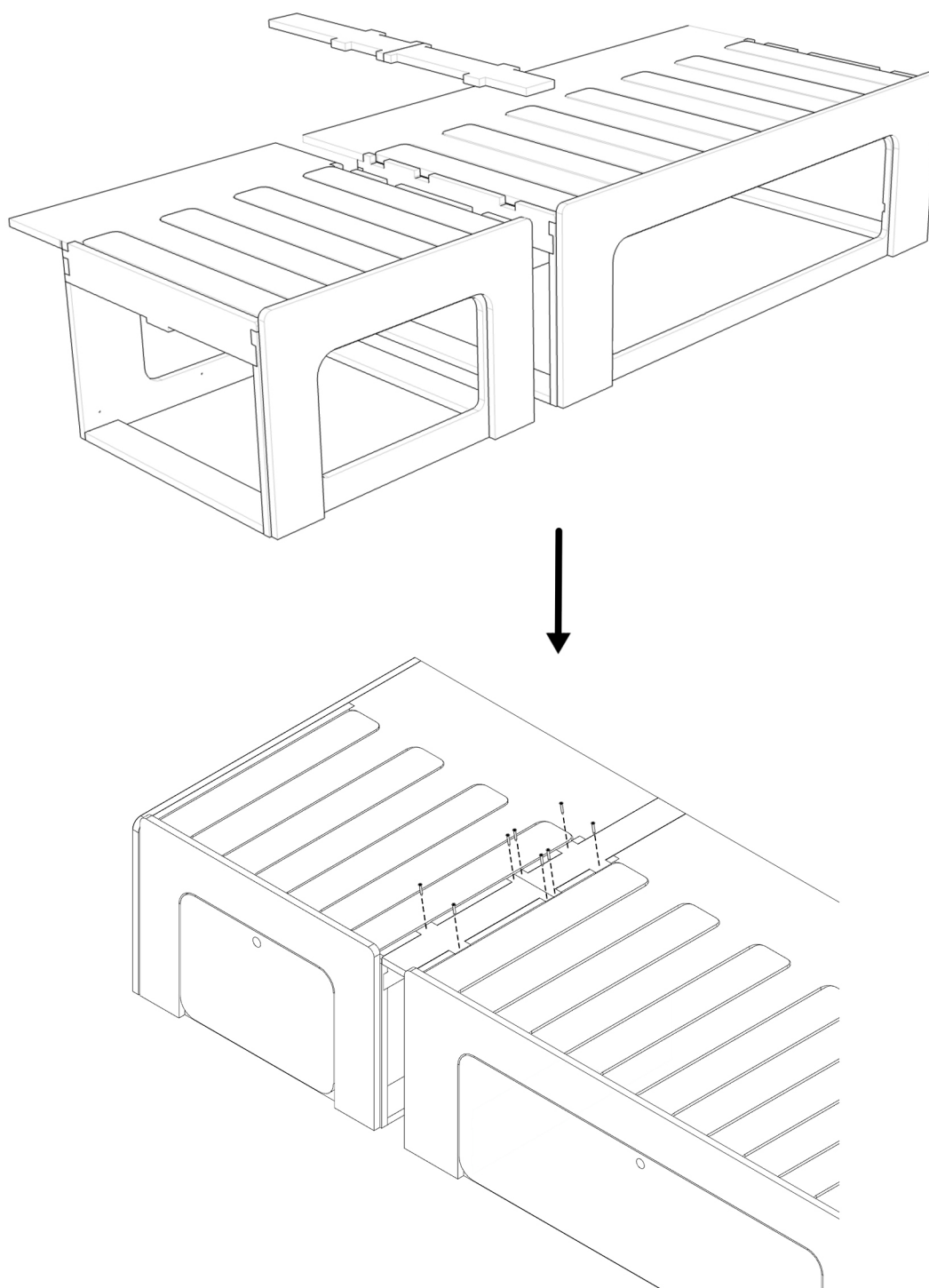


## Step 5: Assembling the extension


**!** **OPTIONAL:** This step is optional and allows you to get a bed that is 187 cm long. This works with all our kits except for the Expert / jumpy models.

A 7 cm extension (2 pieces Z1 + one piece Z) is provided with the bed to separate the 60 cm part from the 120 cm part. **This operation must be carried out before making the cuts in the headband** (see step n°6).

- 1** Position the 2 pieces **Z1** as shown below and screw them using the small diameter 25 mm screws.

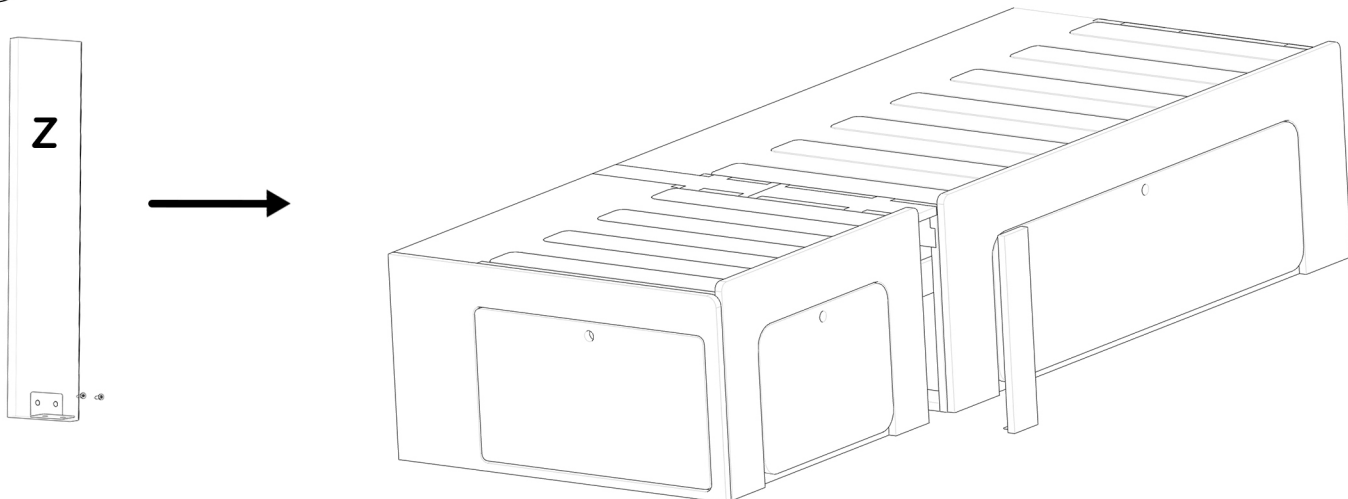


## Step 5: Assembling the extension

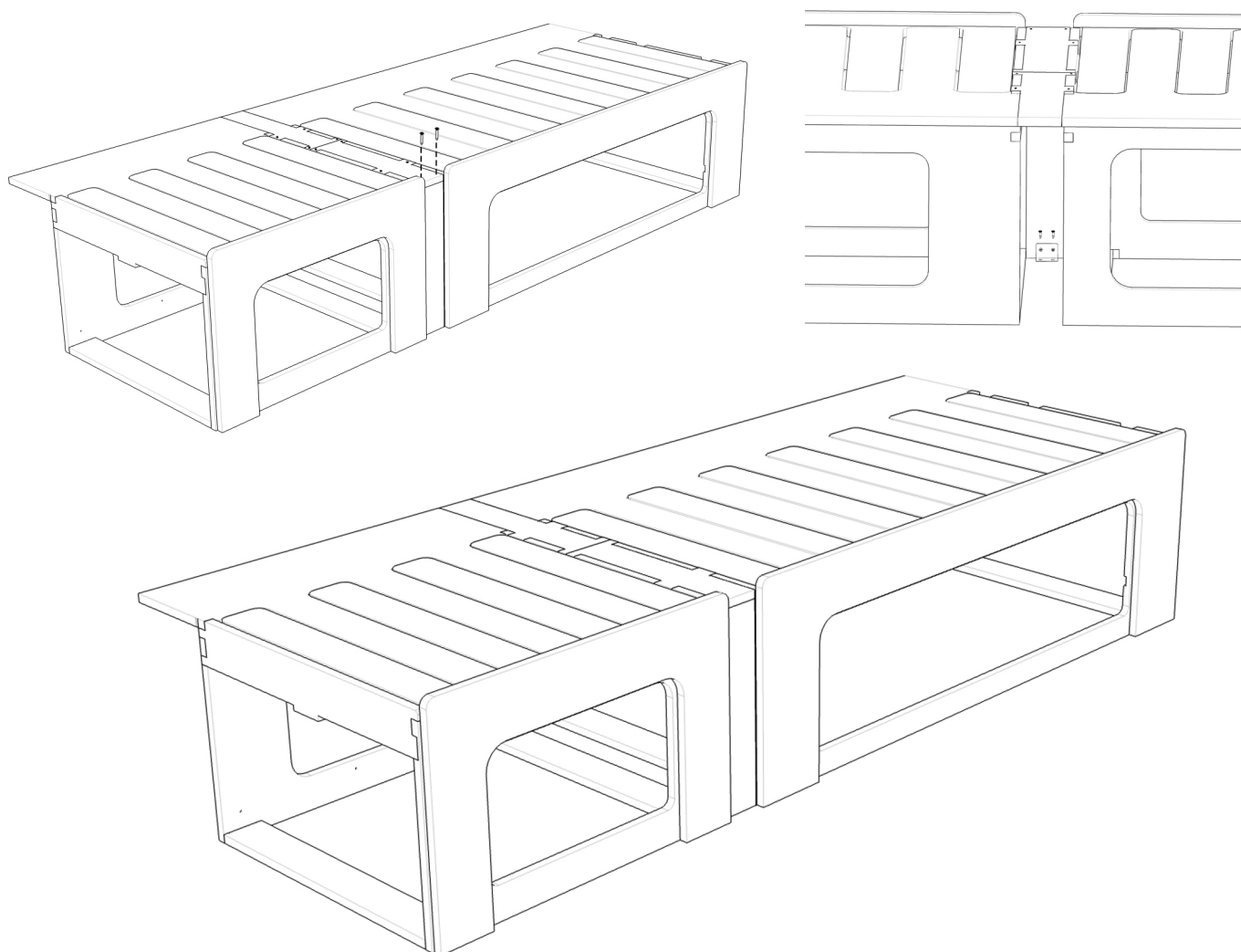
 **OPTIONAL:** This step is optional and allows you to get a bed that is 187 cm long. This works with all our kits except for the Expert / jumpy models.

A 7 cm extension (2 pieces Z1 + one piece Z) is provided with the bed to separate the 60 cm part from the 120 cm part. This operation must be carried out before making the cuts in the headband (see step n°6).

**2** Attach a metal bracket to the bottom of the remaining piece Z using 2 screws of 15 mm.



**3** Screw the pieces together using 25 mm small diameter screws and to the ground using 15 mm screws through the metal bracket.



## Step 6 (optional): Cutting the headband

### IMPORTANT INFORMATION:

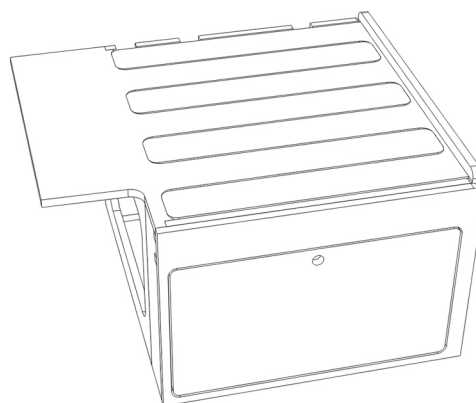
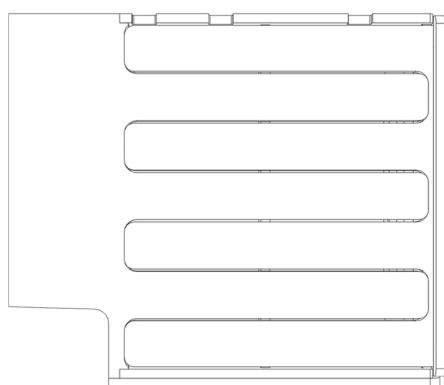
If you are looking for simplicity, you can skip this step, unless you have an Expert / Jumpy.

Possibility of cutting the strip (on the 60 and 120 cm part) to a maximum width of 150 mm to best adapt to the shape of your van! However, **be careful not to cut too much in order to guarantee the desired width of the unfolded bed.**

**Once this adaptation has been completed, you can move on to step 9.**

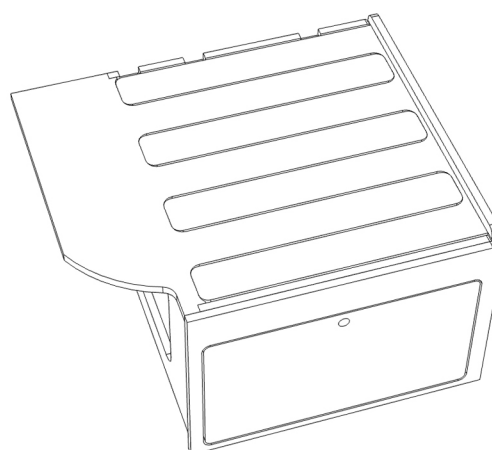
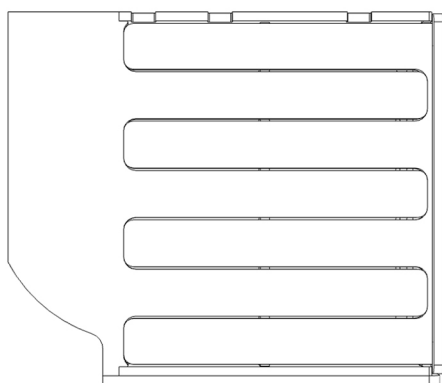
### Example of cutting for Expert / Jumpy

For our Drifter / Nomad kits in an Expert / Jumpy you must make this cutout.  
You can download the templates to make your cutting easier.



### Example of cutting for volkswagen T5 /T6

You have the option of making this cut in a VW T5/T6, Traffic or other van to either have the extension of the bed (therefore a 187cm bed) or position your furniture as far as possible towards the rear of the van and thus save from space.

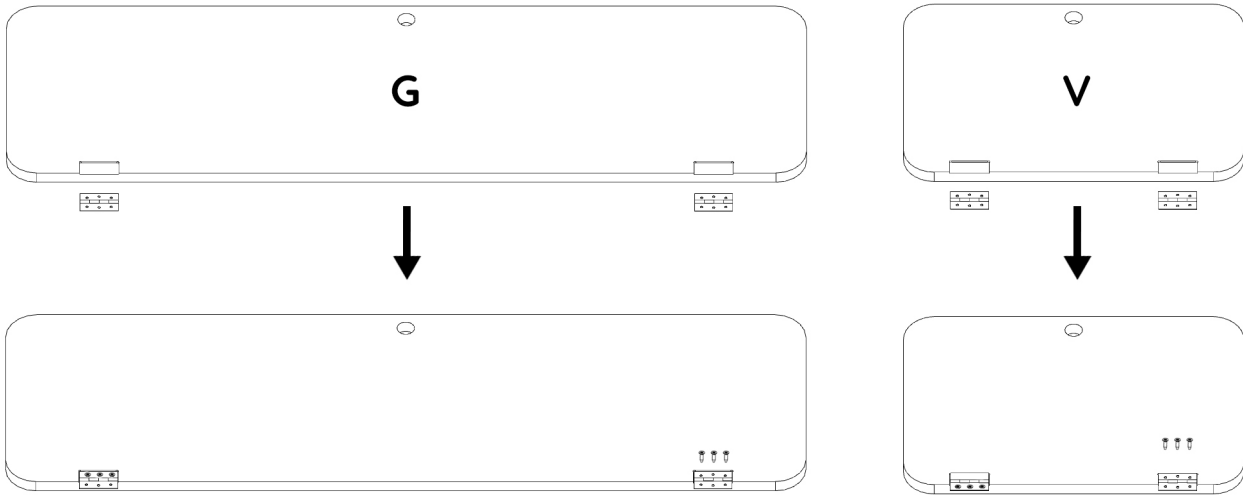




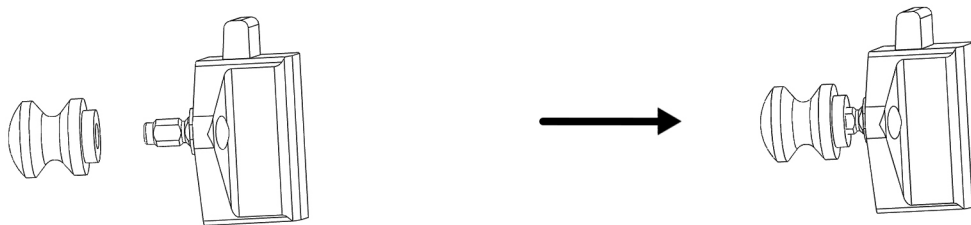


## Step 7: equipping the doors (hinges and locks)

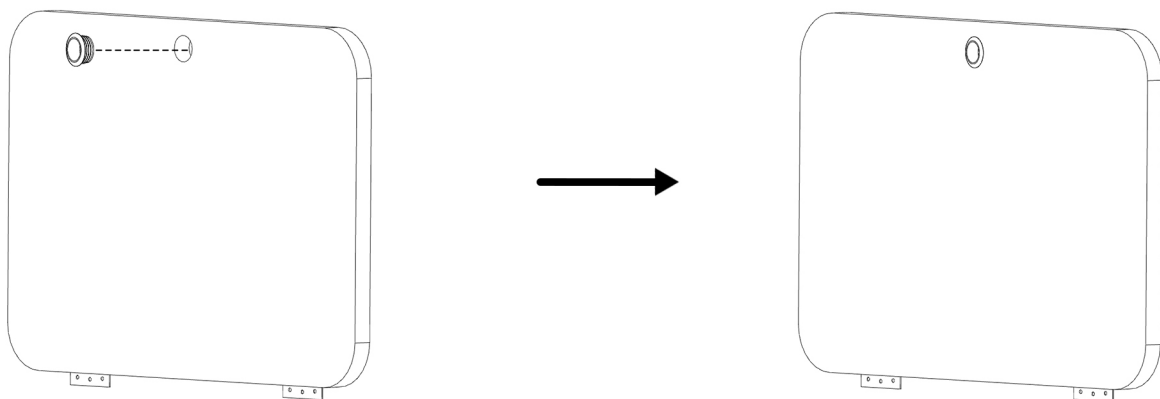
- 1 Place the hinges in the door locations **G** and **V** then screw using the 12 mm screws



- 2 Equip the locks as follows.

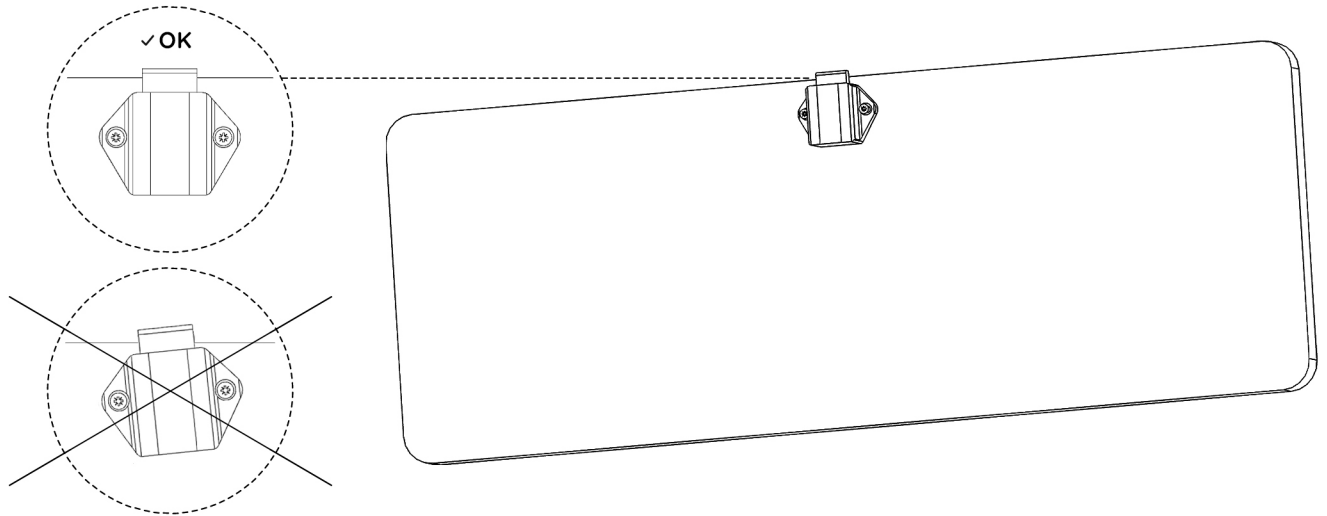


- 3 Instructions for Inserting Rosettes on Doors **G**, **V**, and **M**

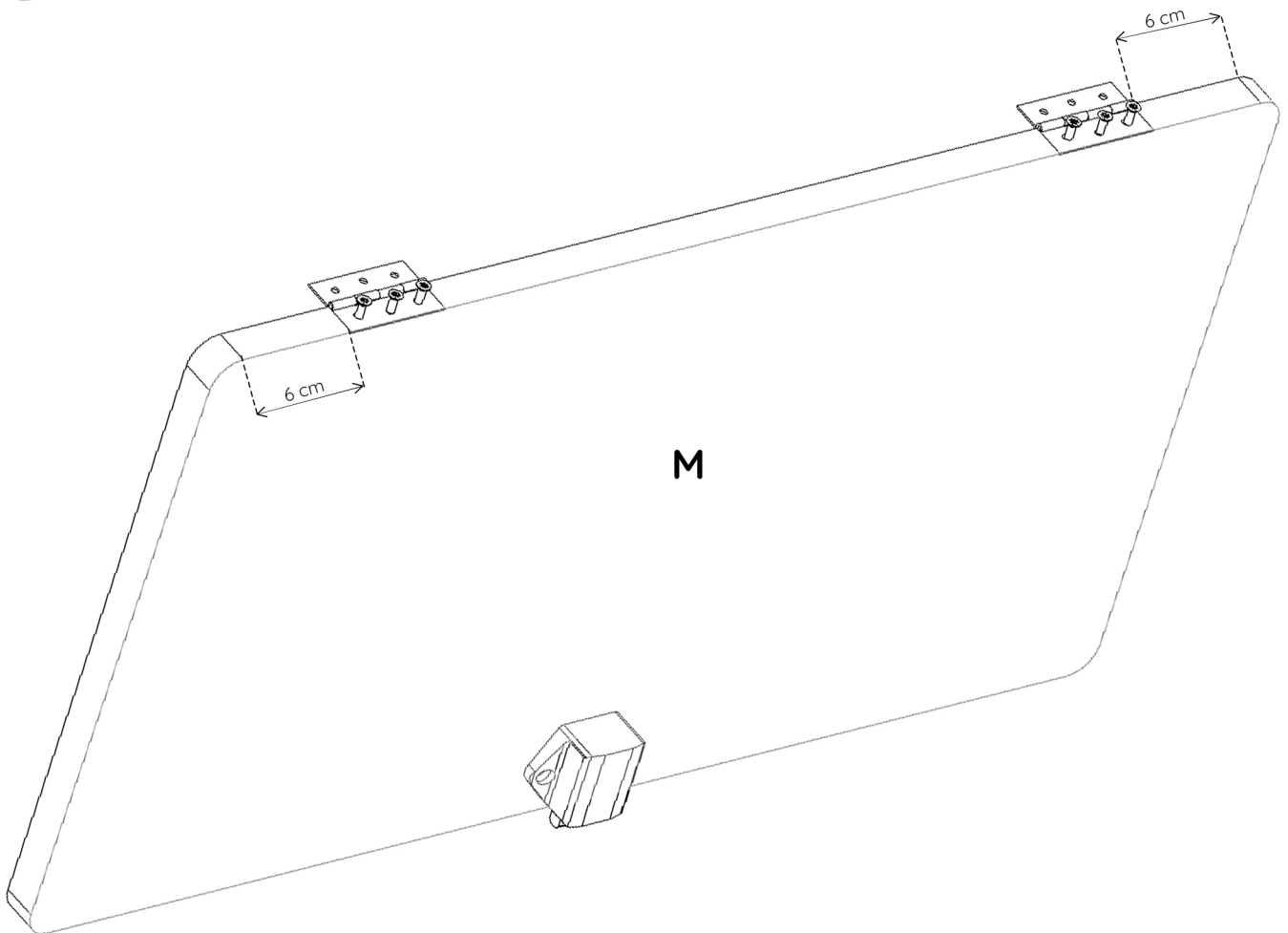


## Step 7: equipping the doors (hinges and locks)

- 4 Place the lock on the back of the **G**, **V** and **M** doors and secure them using the 12 mm screws.



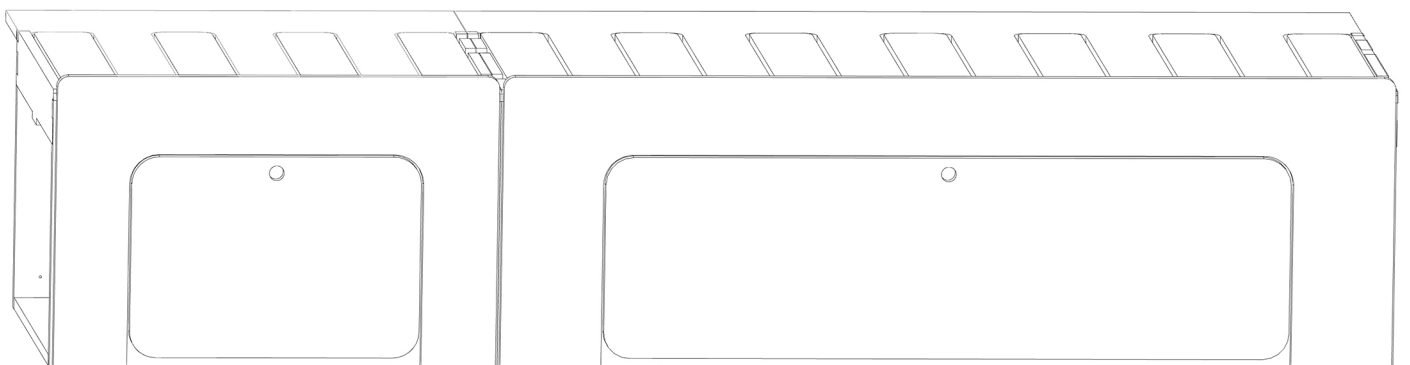
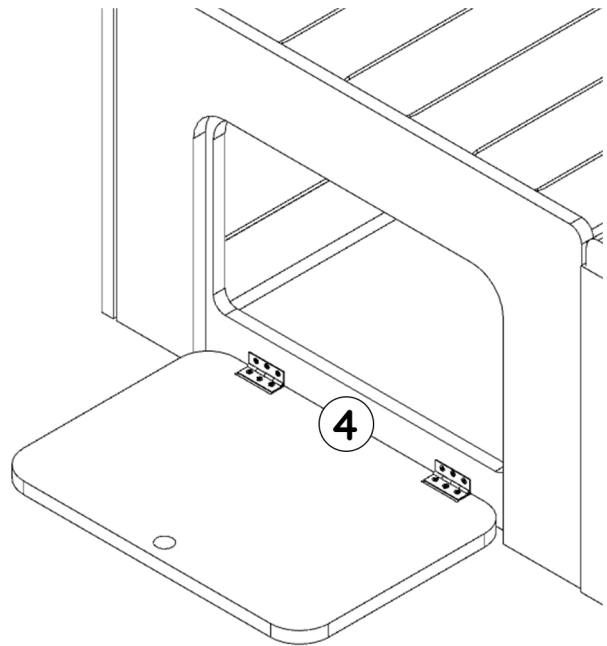
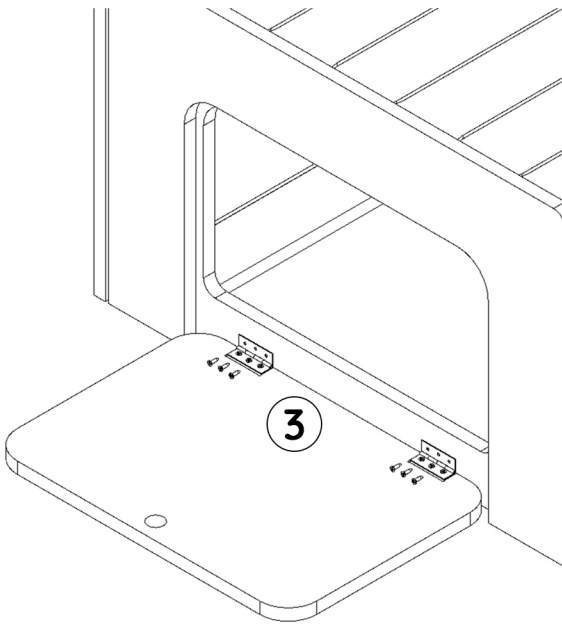
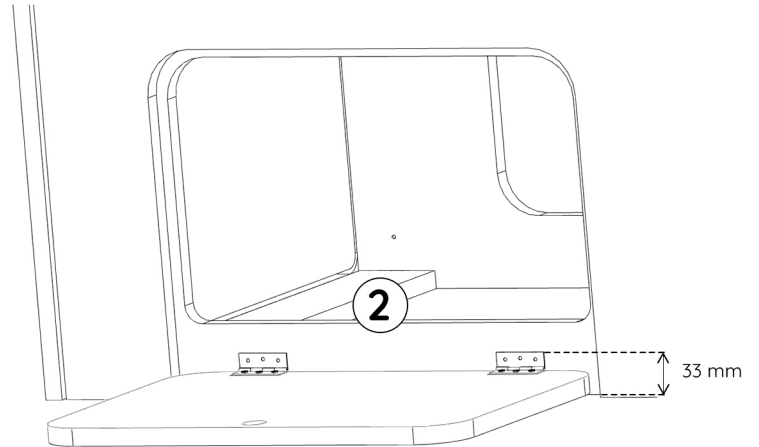
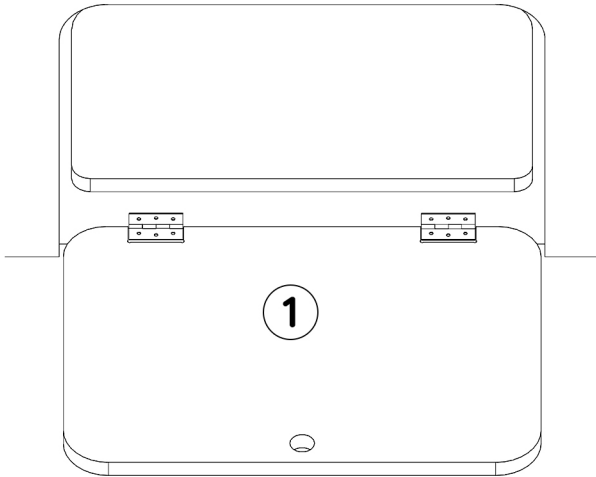
- 5 **Special case of door M:** Position the hinges **6 cm from the edge of door M** aligned with the interior edge as below



## Step 8: fixing the doors to the fixed parts

For doors **G** and **V**, proceed in 4 steps as follows for each of them:

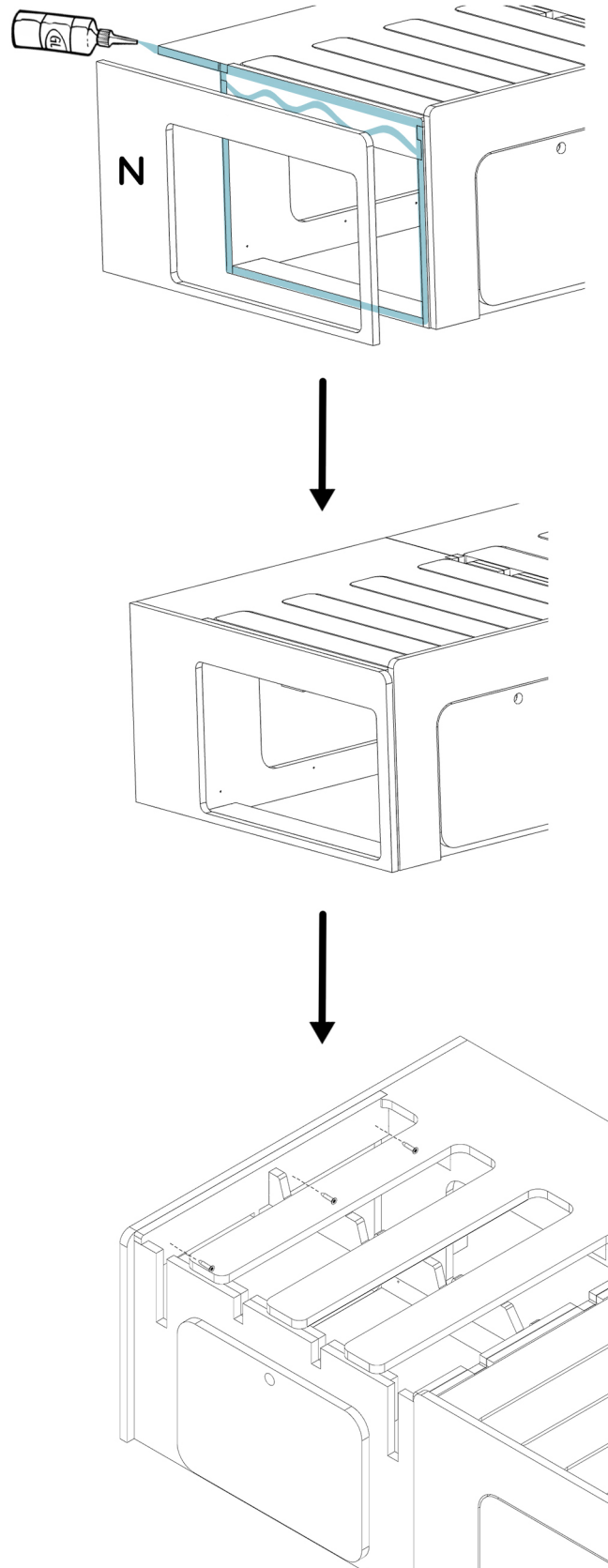
- 1 - Position the door flat in front of the bed and center it in relation to the feet of the mobile comb.
- 2 - Shim the underside of the door (approximately 5 mm of shim) so that the top of the hinge reaches a height of 33 mm from the bottom of the bed
- 3 - First fix a 12 mm screw per hinge (middle screw) to test the closure of the lock and check the centering of the door,
- 4 - Screw in the remaining 12 mm screws..





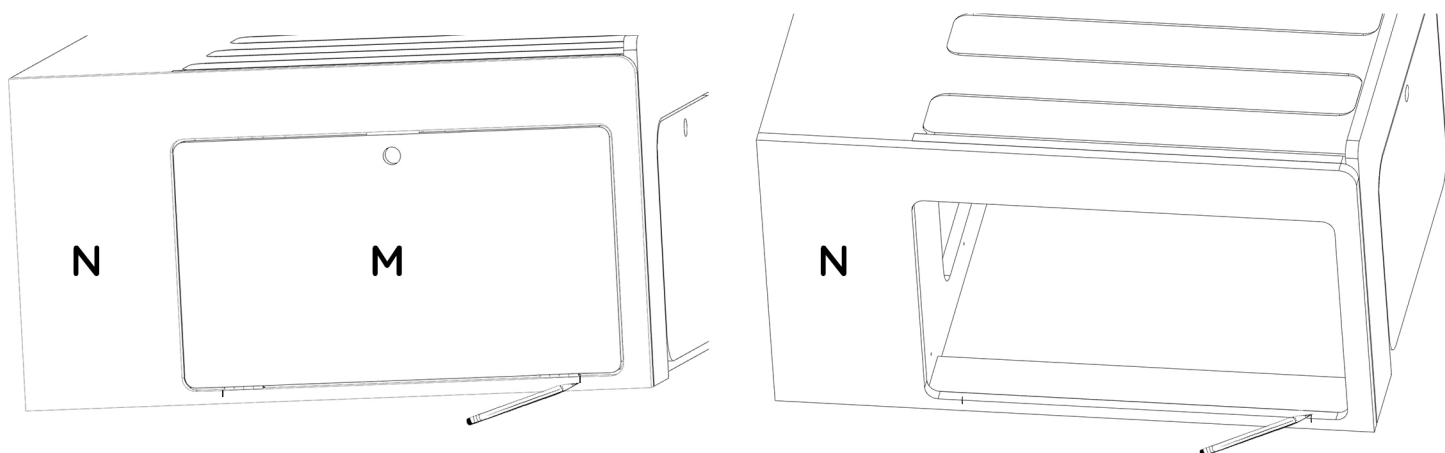
## Step 9: Assembling the rear part of the bed

- 1 Position part **N** on the back of the bed and screw using three 25 mm screws as below. You can also glue it or add a bracket to the back if there is space left after carrying out step 8.

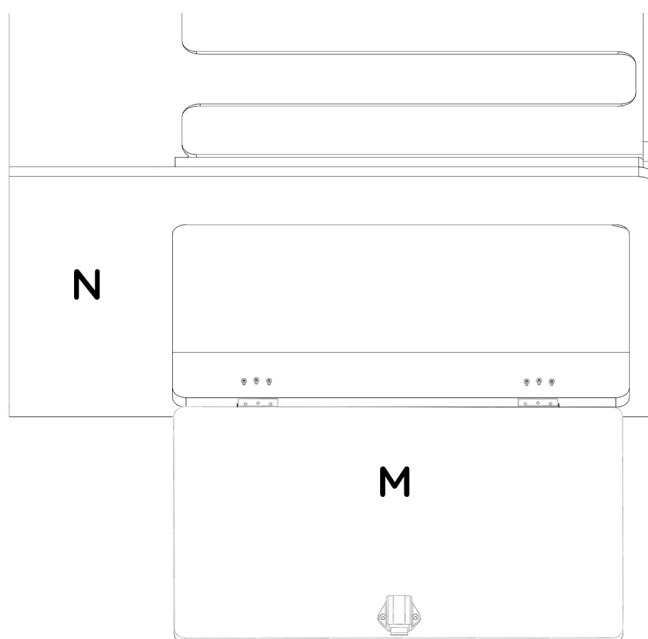


## Step 9: Assembling the rear part of the bed

- 2 Place the door **M** in the intended opening, check that it is properly centered and discreetly mark the outer edge of the two hinges with a pencil, then transfer the line to the frame.



- 3 Position the hinges on the internal edge of the **N** frame and screw 1 12 mm screw in the middle of each hinge to test the adjustment of the door. Once the adjustment is verified, tighten the remaining 12 mm screws.

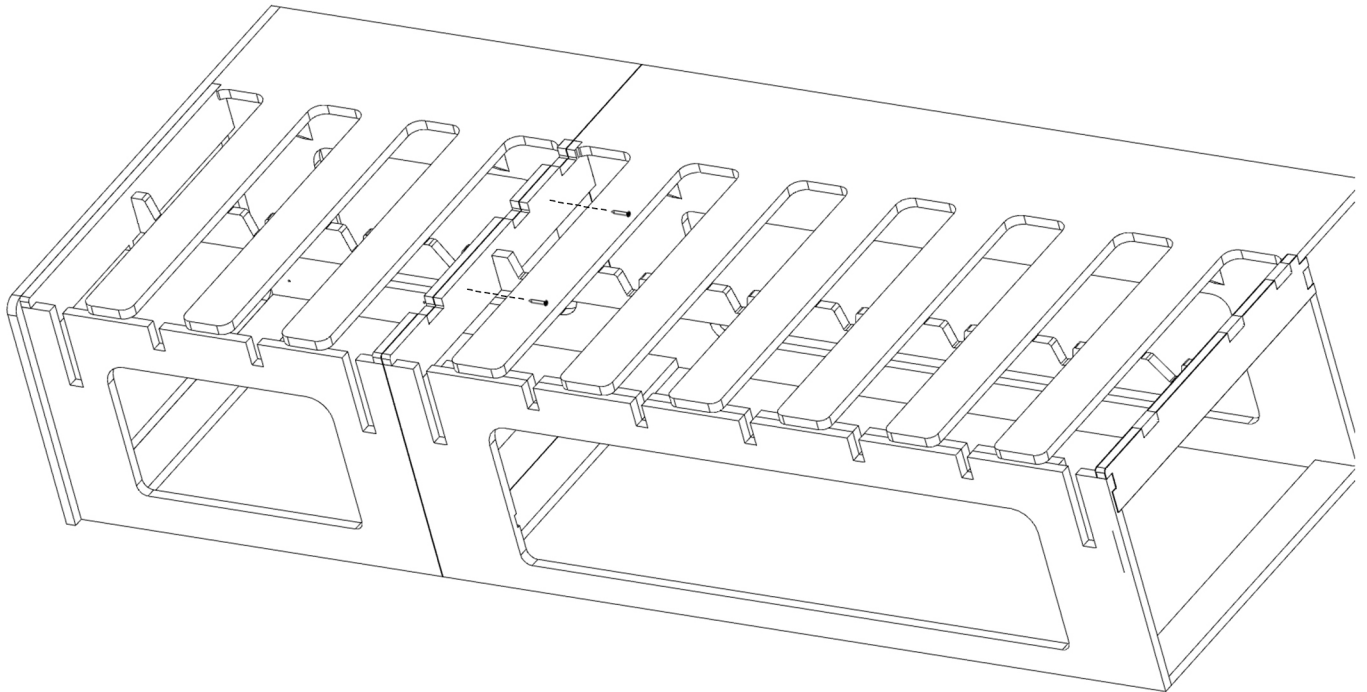




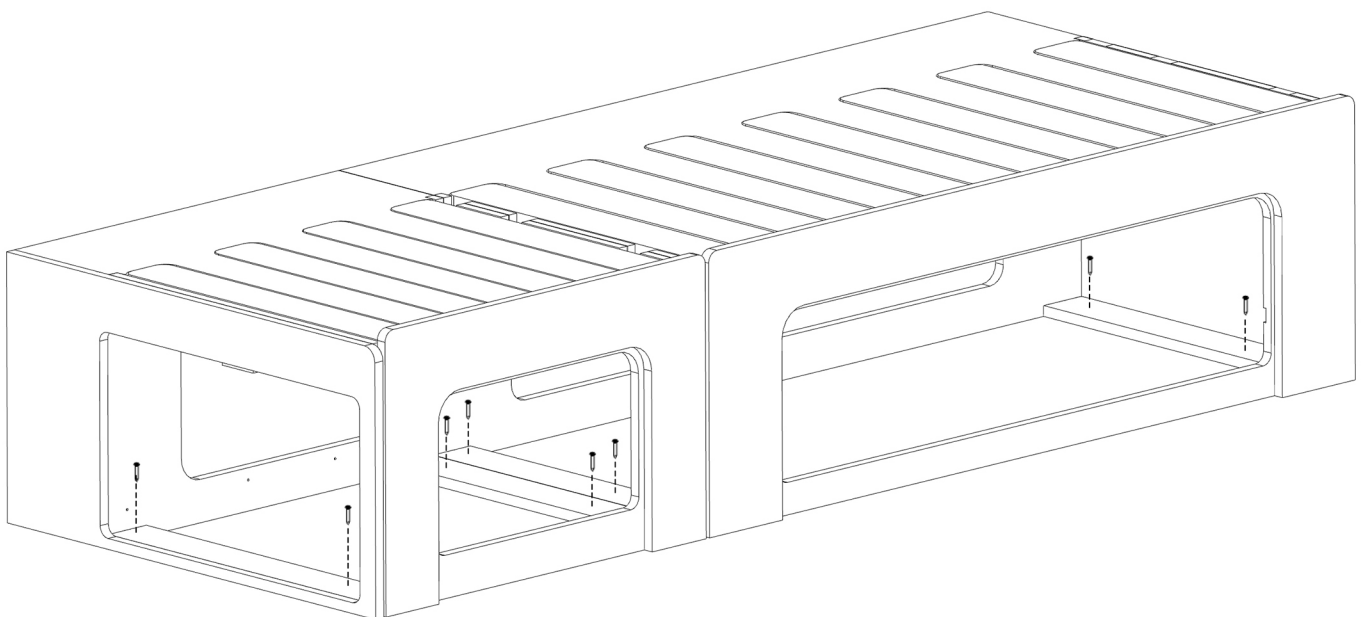


## Step 10 : Fixing to the ground

- 1 Start by **fixing part 60 to part 120** with two 25 mm screws.



- 2 We recommend fixing your bed to the floor using our **tool-free fixing kit** or **using 25 mm screws by screwing through the various reinforcements at the bottom of the bed** as below (4 screws for the 120 part and 4 others for the 60):



# HAPPY ASSEMBLY!

If you have any comments regarding the assembly,  
you can let us know by email:  
[sav@simplevans.eu](mailto:sav@simplevans.eu)

**ALL  
TUTORIALS →  
HERE**



## SHARE YOUR EPIC VAN BUILD JOURNEY WITH US AND THE COMMUNITY!

#SimpleVansLife

**Snap some pics or record a video of your awesome furniture  
installed and ready for adventure.**

We'll feature the best content on our social media channels,  
and the most inspiring builds will win incredible prizes!

