

# Assembly guide

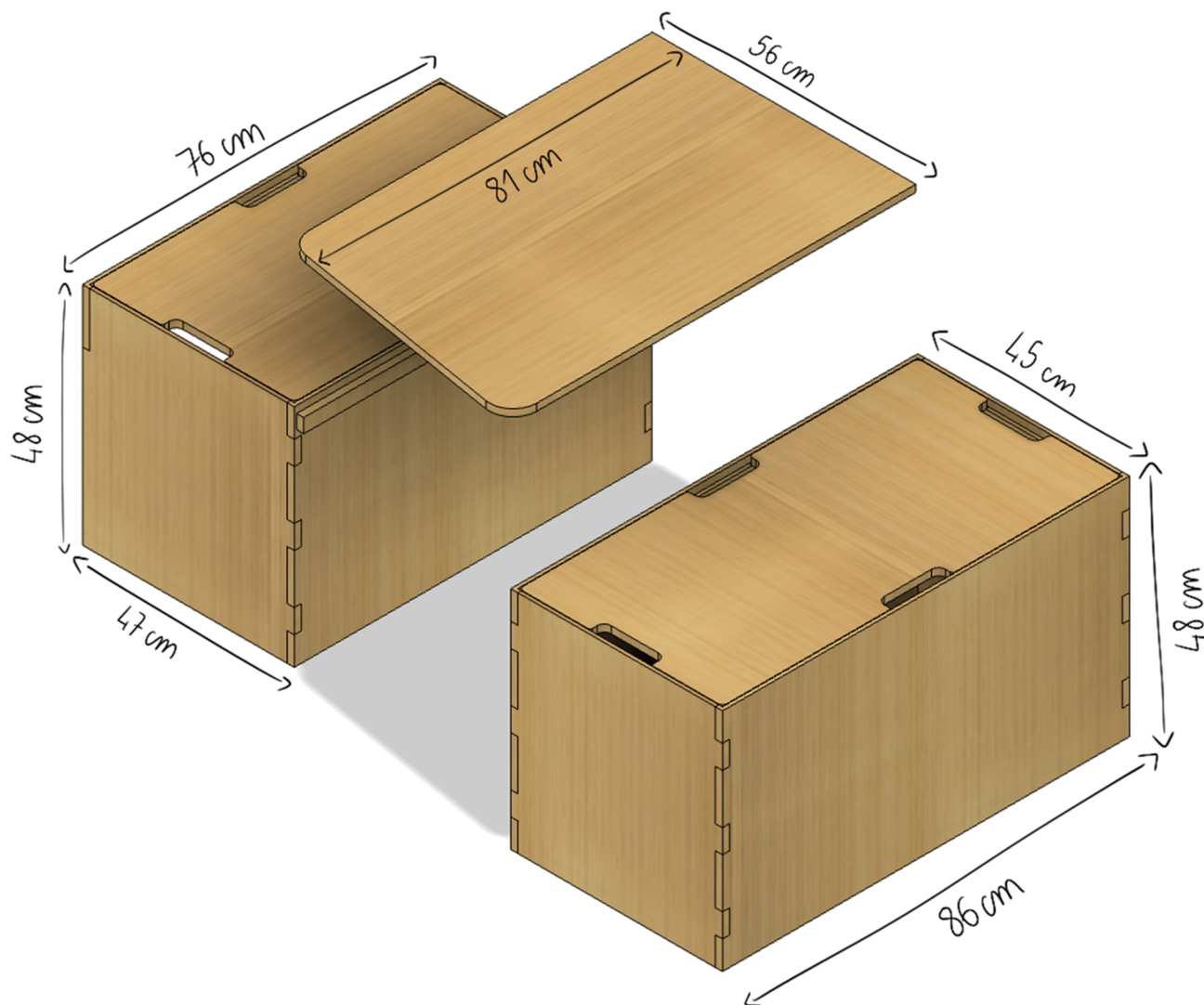
# AG Unit



**WELCOME ABOARD!**

Let's assemble Your dream furniture and get you on the road.

**LET'S GO !**



## SHOW OFF YOUR SKILLS & INSPIRE THE VANLIFE COMMUNITY!

Share your build on Facebook, Instagram ou TikTok.

Use #SimpleVansLife :

**Best content wins awesome prizes.**



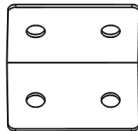
# Materials required for assembly

- Masking tape
- Square (optional)
- PZ1 & PZ2 screwdriver
- Wood glue (slow-drying recommended)
- Damp cloth (or paper towel)

## Package contents :



Screw 15 mm X 16



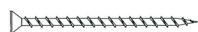
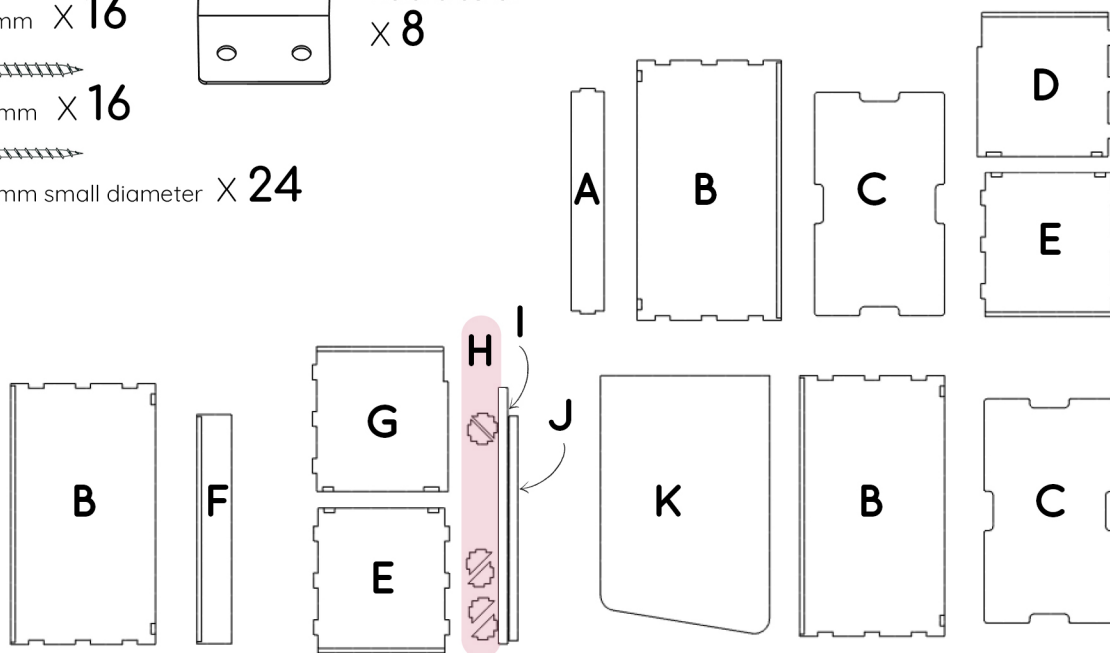
Metal bracket  
X 8



Screw 25 mm X 16

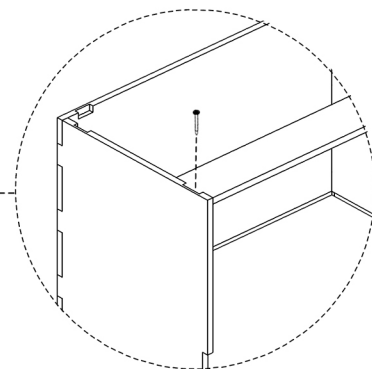


Screw 25 mm small diameter X 24



### ASSEMBLY TIP

We provide **25 mm thin screws** that you can add to the hidden sides of the furniture to simplify and strengthen assembly.



## Read before assembling the furniture

- Check for chips in the grooves
- Check that the parts are free of defects before gluing / or make a dry fitting
- Read the entire instructions carefully before final assembly with glue
- Wipe off excess glue with a damp cloth immediately after gluing each piece
- Make any cuts (if necessary) before gluing the furniture
- Protect the surrounding areas of the gluing areas with masking tape to reduce cleaning

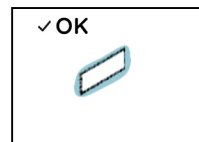
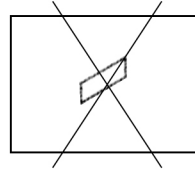
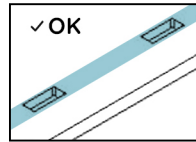
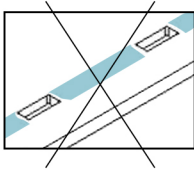
If you have a problem with a part or accessory, please contact us by email: [sav@simplevans.eu](mailto:sav@simplevans.eu)



Apply a sufficient amount of glue to the contact surfaces and grooves.

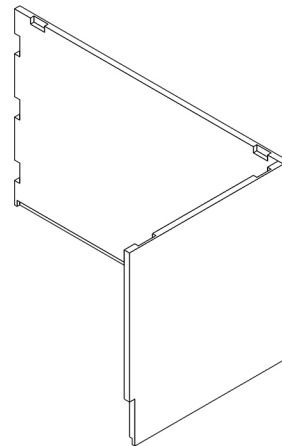
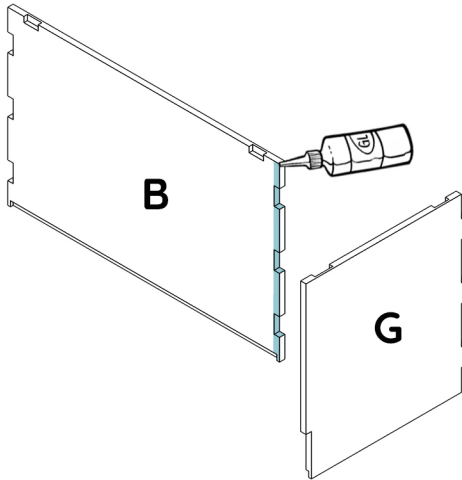
The glue should **slightly protrude from the grooves when assembled**.

**Wipe off excess glue** with a damp cloth after assembly.

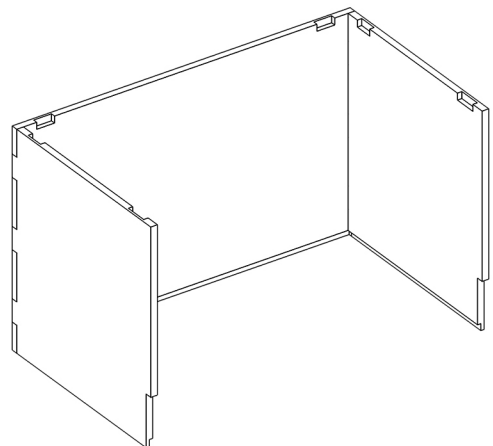
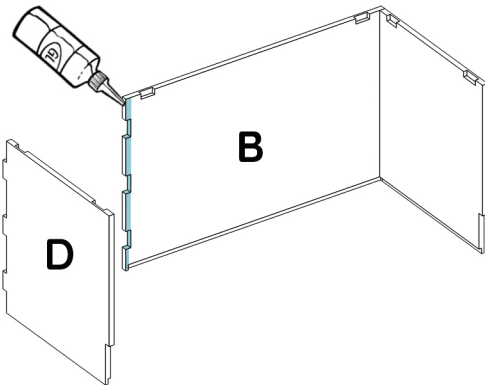


glue that comes out slightly after assembly

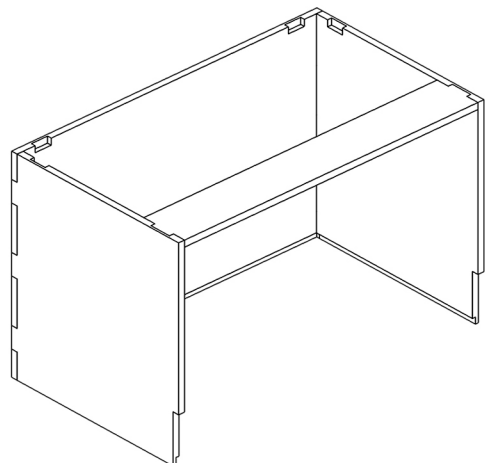
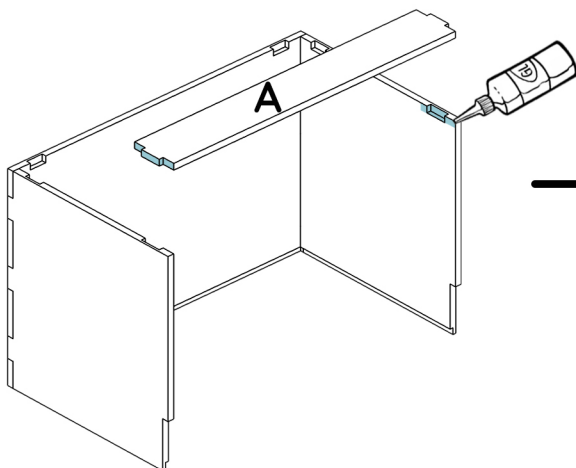
- 1 Apply glue to the notches and joints then assemble parts **B** and **G**.



- 2 Apply glue to the notches and joints then assemble parts **B** and **D**.



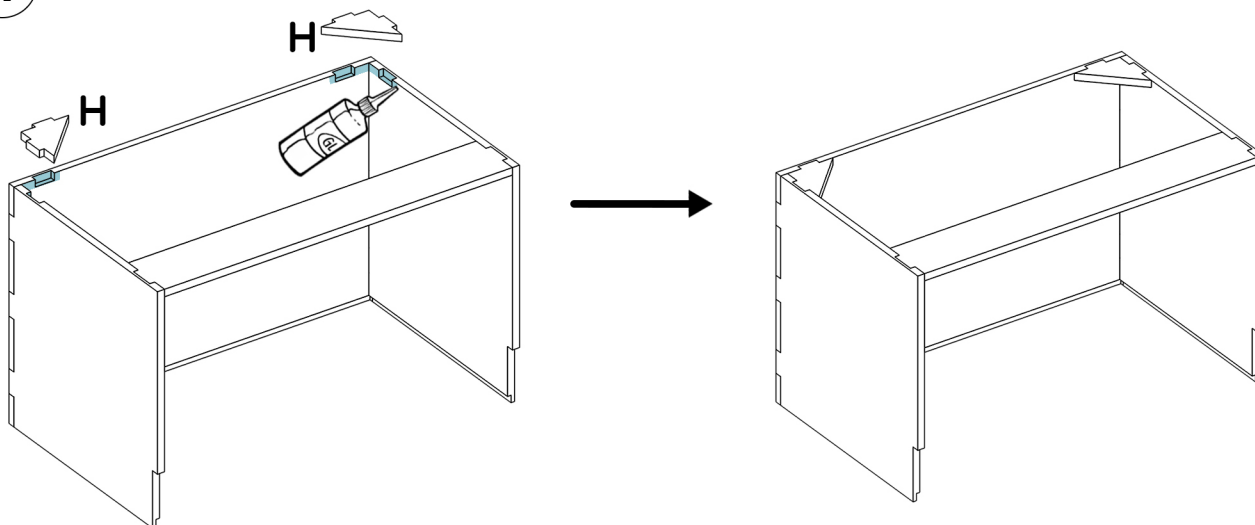
- 3 Apply glue to the notches and joints then assemble part **A** with the rest of the furniture.



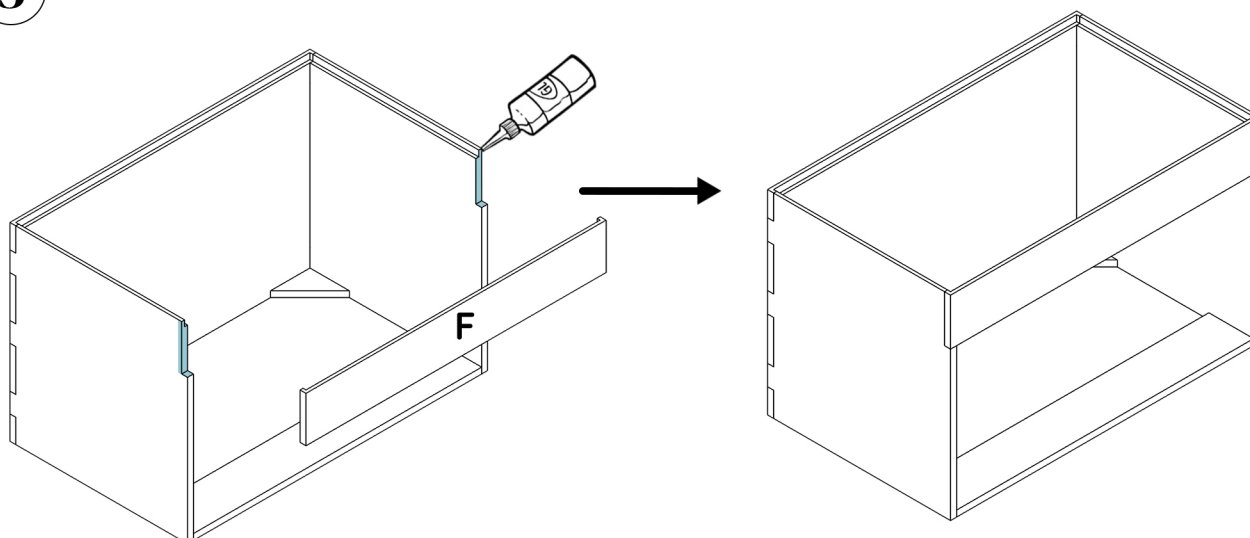


# FURNITURE ASSEMBLY

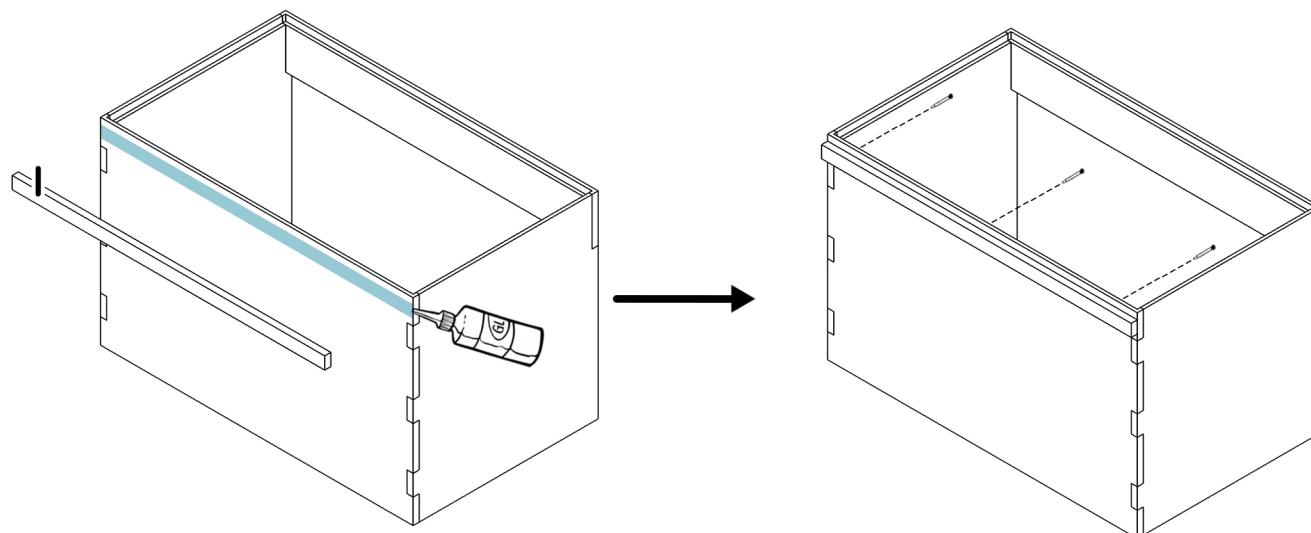
- 4** Apply glue to the notches and joints and assemble the **H** angles with the rest of the furniture.



- 5** Apply glue to the notches and joints and assemble part **F** with the rest of the furniture.

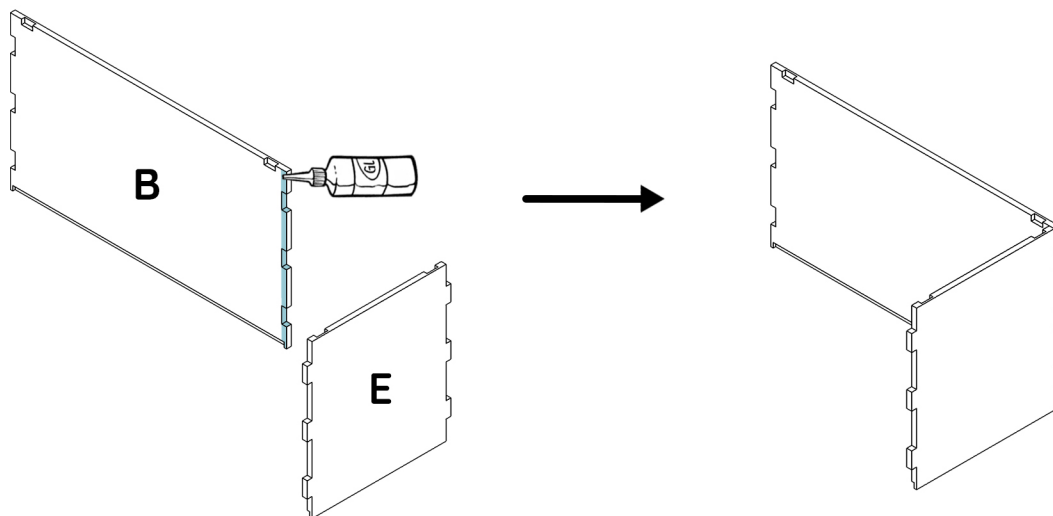


- 6** Apply glue and assemble part **I** with the rest of the furniture, then screw part **I** from the inside of the furniture using 3 thin 25 mm screws.

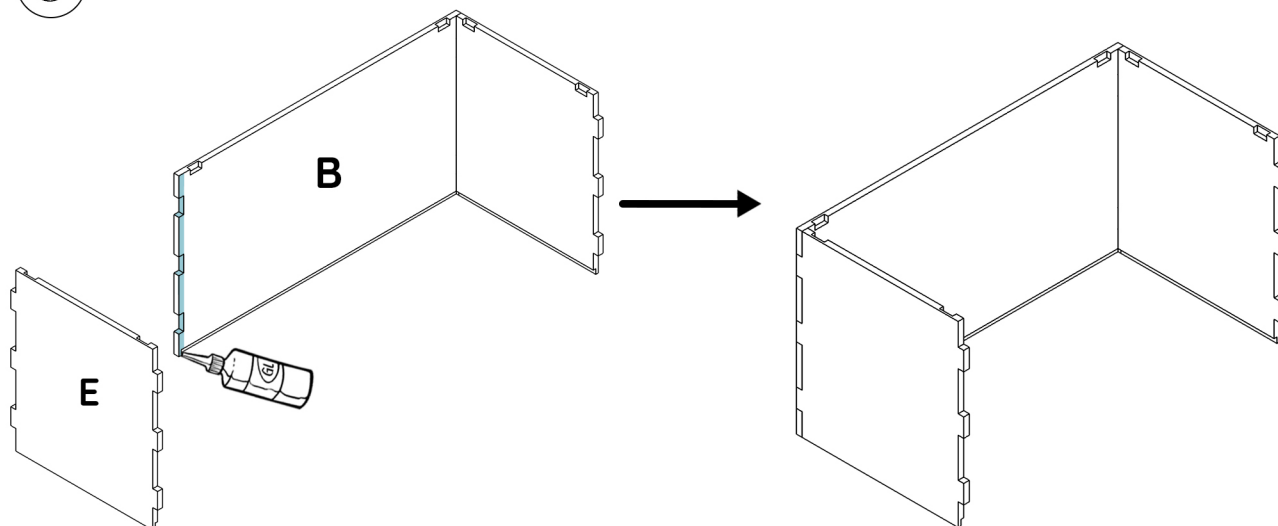


# FURNITURE ASSEMBLY

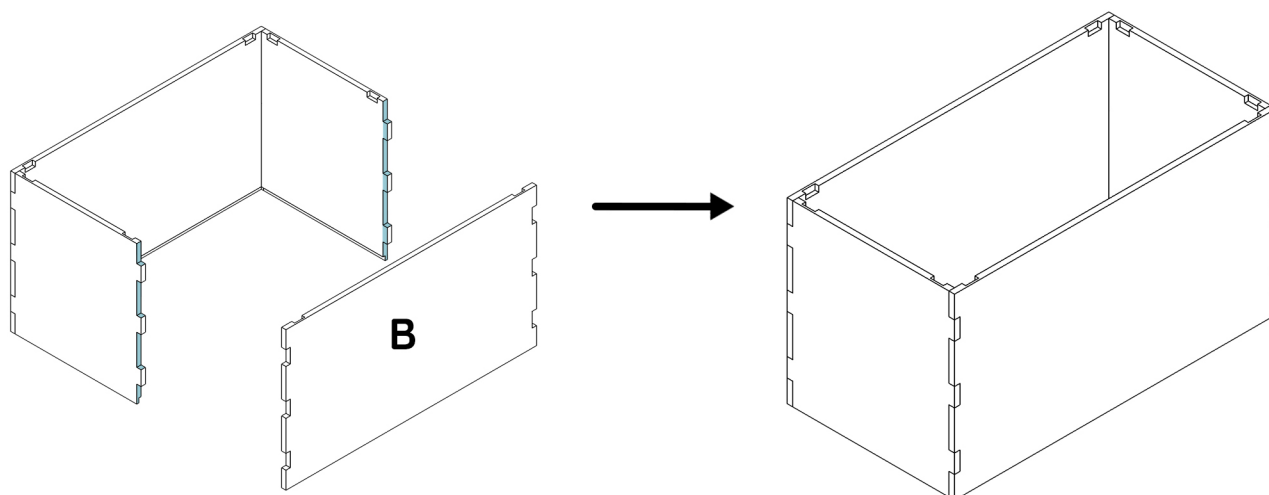
- 7** Apply glue to the notches and joints then assemble parts **B** and **E**.



- 8** Apply glue to the notches and joints, then assemble the second part **E** with part **B**.

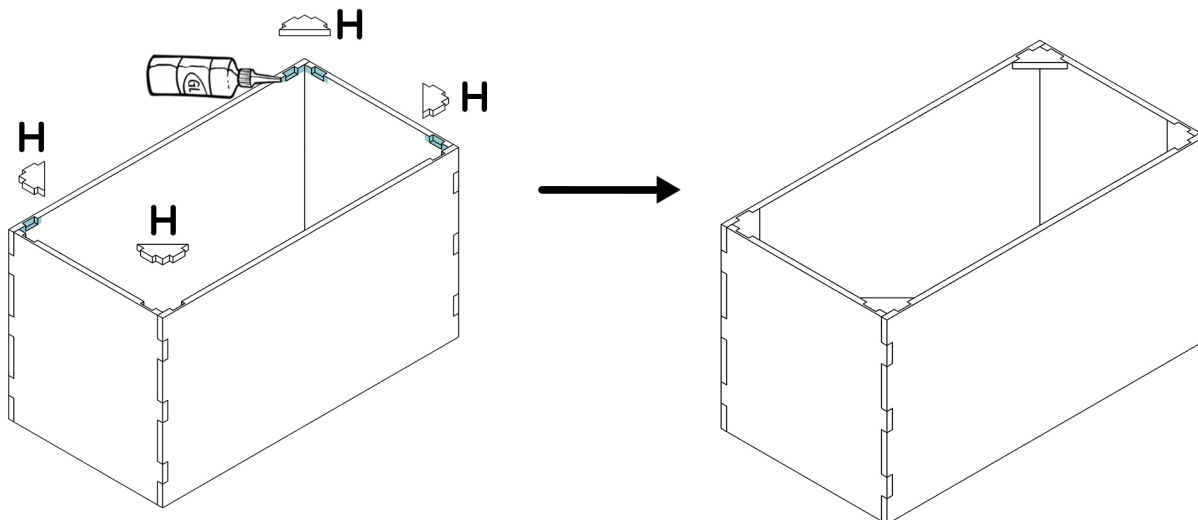


- 9** Apply glue to the notches and joints and assemble the second part **B** with the rest of the furniture.

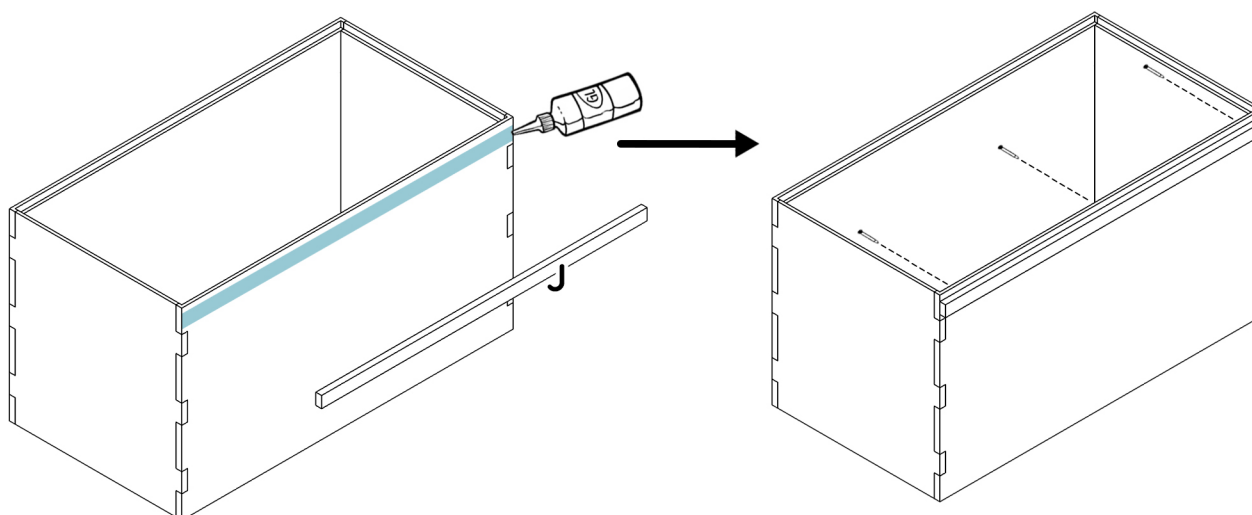


## FURNITURE ASSEMBLY

- 10** Apply glue to the notches and joints and assemble the four **H** angles with the rest of the furniture.



- 11** Apply glue and assemble part **J** with the rest of the furniture, then screw part **J** from the inside of the furniture using three thin 25 mm screws.



# HAPPY ASSEMBLY!

If you have any comments regarding the assembly,  
you can let us know by email:  
**sav@simplevans.eu**

**ALL  
TUTORIALS  
HERE**



## **SHARE YOUR EPIC VAN BUILD JOURNEY WITH US AND THE COMMUNITY!**

**#SimpleVansLife**

**Snap some pics or record a video of your awesome furniture  
installed and ready for adventure.**

We'll feature the best content on our social media channels,  
and the most inspiring builds will win incredible prizes!

